



15th September 2021.

Senior Executive Officer.,
Forward Planning Section,
Land Use Planning and Transportation Department,
South Dublin County Council,
County Hall, Tallaght,
Dublin 24.

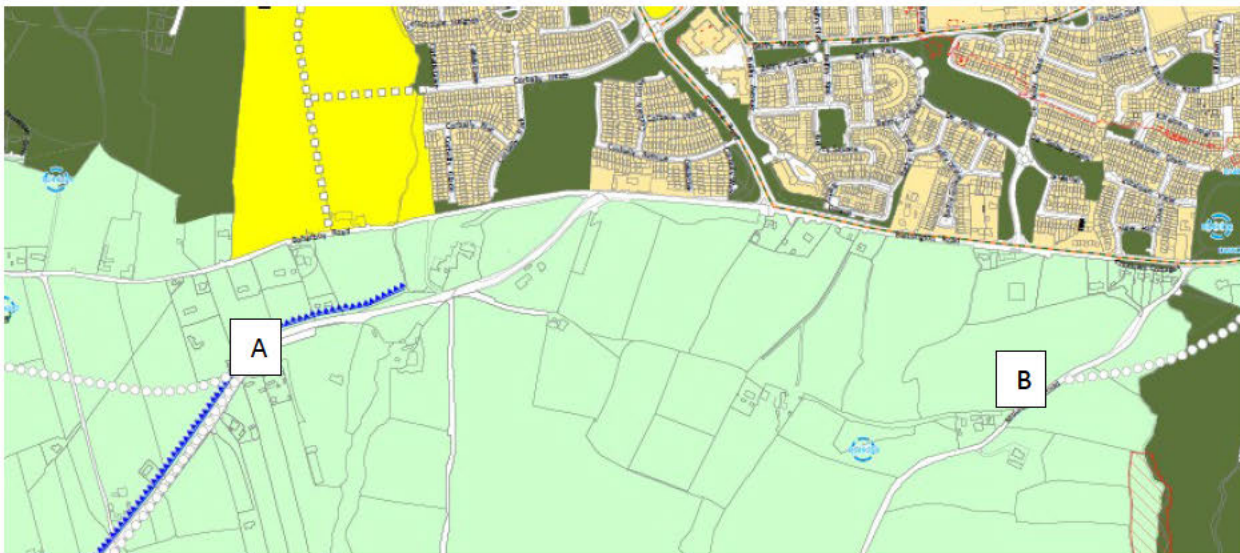
RE: Submission on the Draft South Dublin County Council Development Plan 2022-2028 in relation to lands at Citywest.

Dear Sir/Madam,

I wish to make a submission on behalf of Hugh Durkin and myself under the Public Consultation for the Draft South Dublin County Development Plan 2022-28 regarding the lands highlighted on the enclosed map 'Stage 2 Sheet 09 Map 08'.

Under the Draft South Dublin County Development Plan (Sheet 9, Map 8) the N81 Hollywood Cross to Tallaght Road Improvement Scheme has been removed completely from these lands.

Figure 1: Draft South Dublin County Development Plan 2022-28, Stage 2 Sheet 09 Map 08



Whereas the proposed N81 upgrade route remains unchanged in either direction of these lands, towards Blessington and Saggart/Rathcoole (A) and in the opposite direction on to Jobstown and Tallaght (B).

This proposed new road had been designated on all SDCC Development Plans since 2004 onwards, as shown below:

Figure 2: SDCC Development Plan 2004-2010 (Map 4)

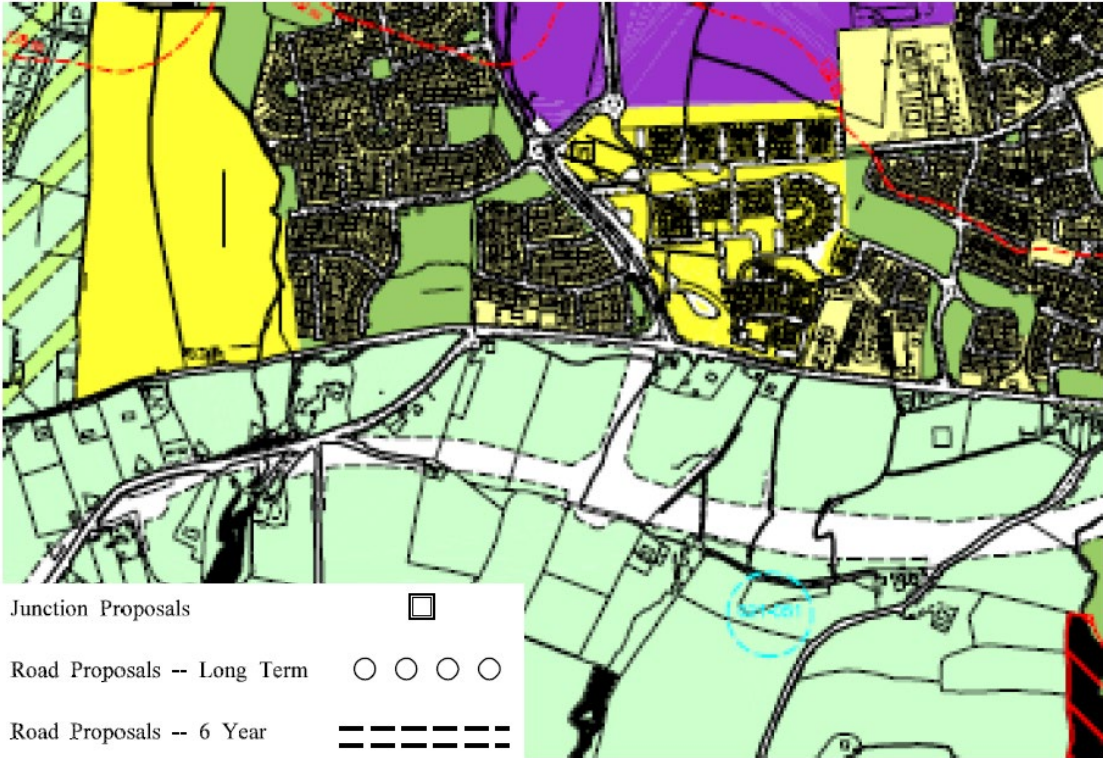


Figure 3: SDCC Development Plan 2010-2016 (Map 4)

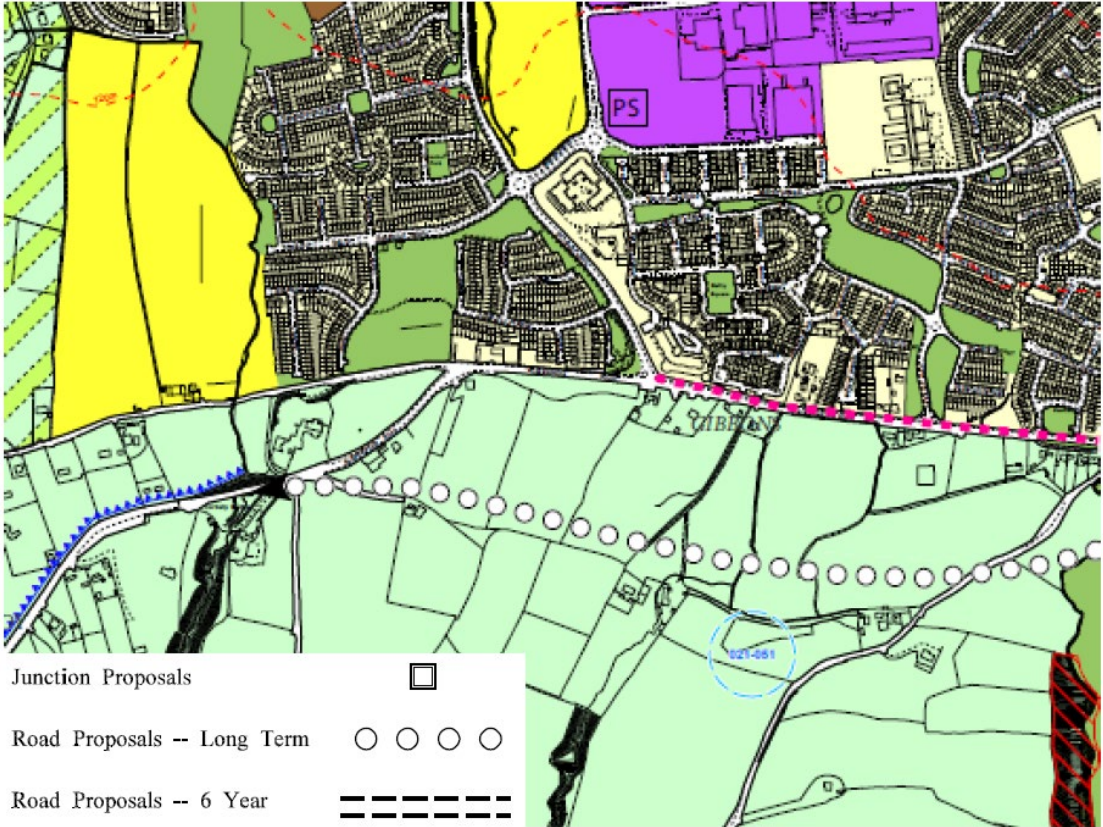
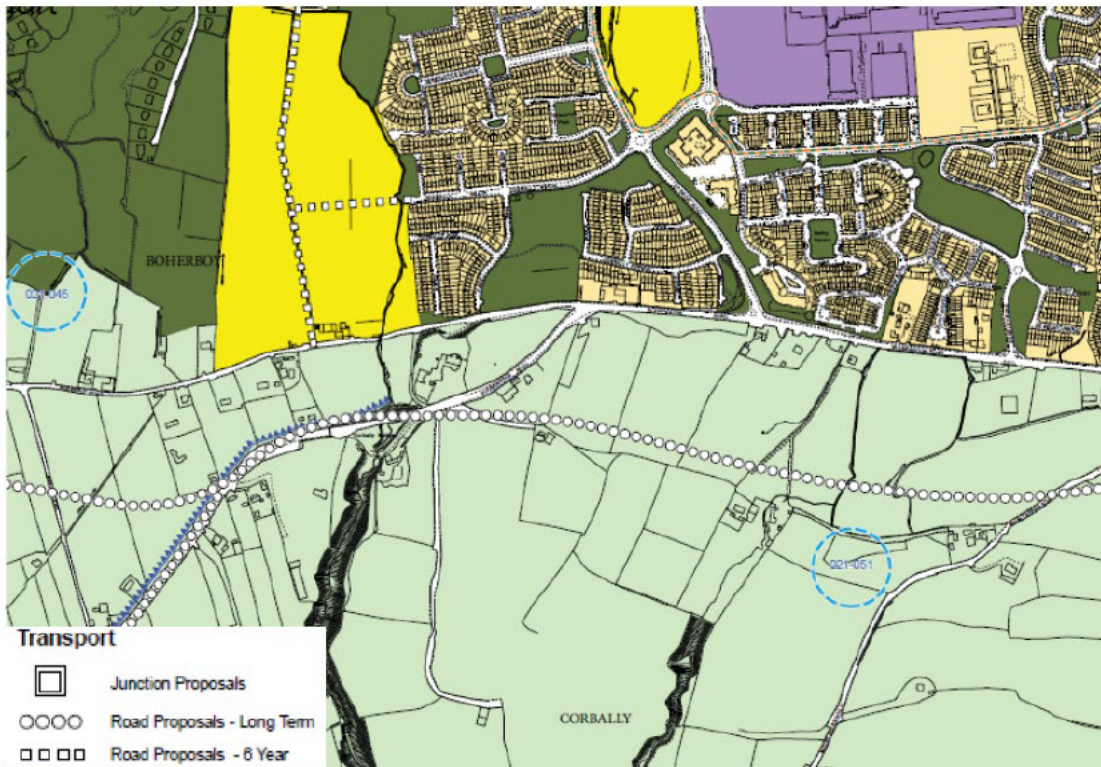


Figure 4: SDCC Development Plan 2016-2022 (Map 8)



On viewing the new draft document (South Dublin County Development Plan 2022-28, Stage 2 Sheet 09 Map 08) this proposed new route seems incomplete and impractical in its new layout.

The existing N81 from the Y junction (towards Blessington and Saggart) to the current traffic lights at the Jobstown Inn is very narrow and in some sections it would be impossible to create cycle lanes, etc. to encourage alternative transport options.

This road is also extremely busy, in both directions, especially during rush hours. It receives regular mentions on radio traffic reports, both locally and nationally.

We believe it would be very beneficial to conduct a Local Area Plan for this region along with its immediate surroundings, so that some clarity can be provided to everyone concerned - the residents, employees, employers and landowners.

Yours sincerely,

pp [Redacted Signature]
Nigel Smyth.