

## **Appendix 2 - Development under Airport Approach /Take Off & Climb Surfaces**

- **Dublin**
- **Birmingham**
- **Edinburgh**
- **Heathrow**
- **Gatwick**
- **Birmingham**
- **Luton**
- **Southampton**
- **LAX (Los Angeles)**

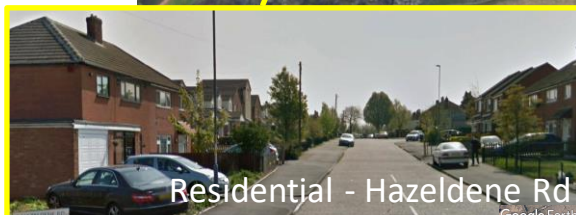
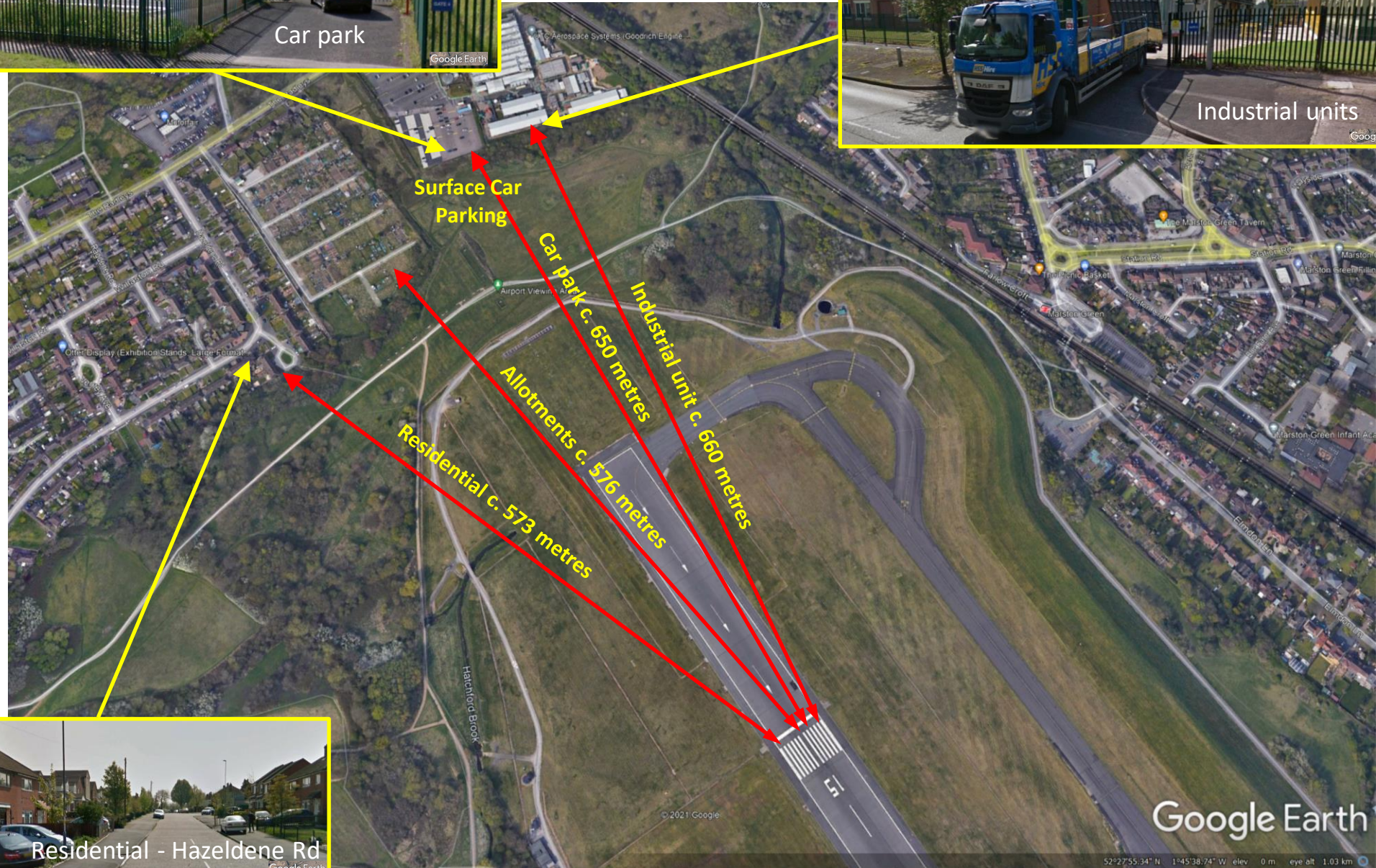


# Dublin Airport, Runway 34



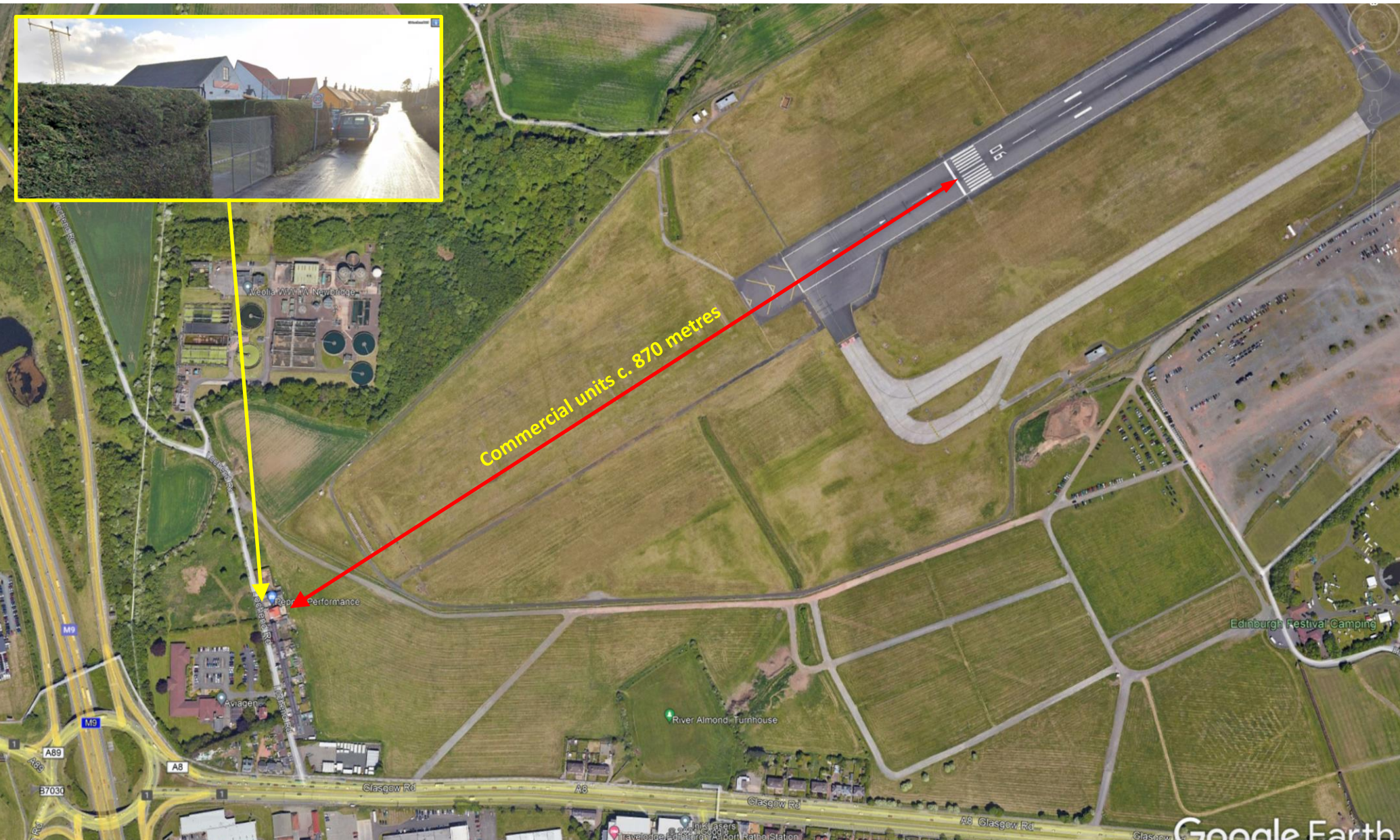


# Birmingham Airport, Runway 15 – Proximity of car park and other uses



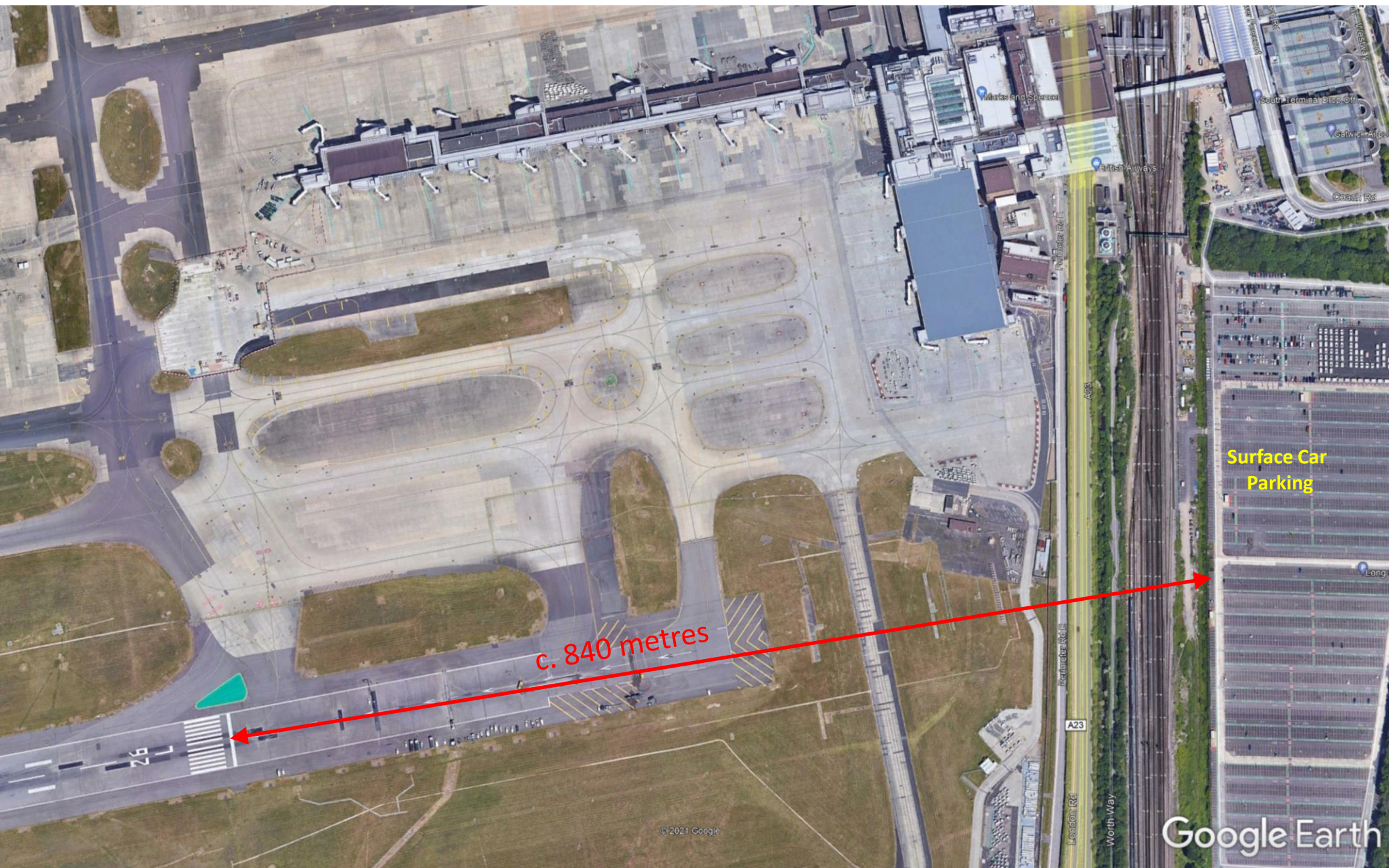


## Edinburgh Airport, Runway 06 – Proximity of commercial units/yards



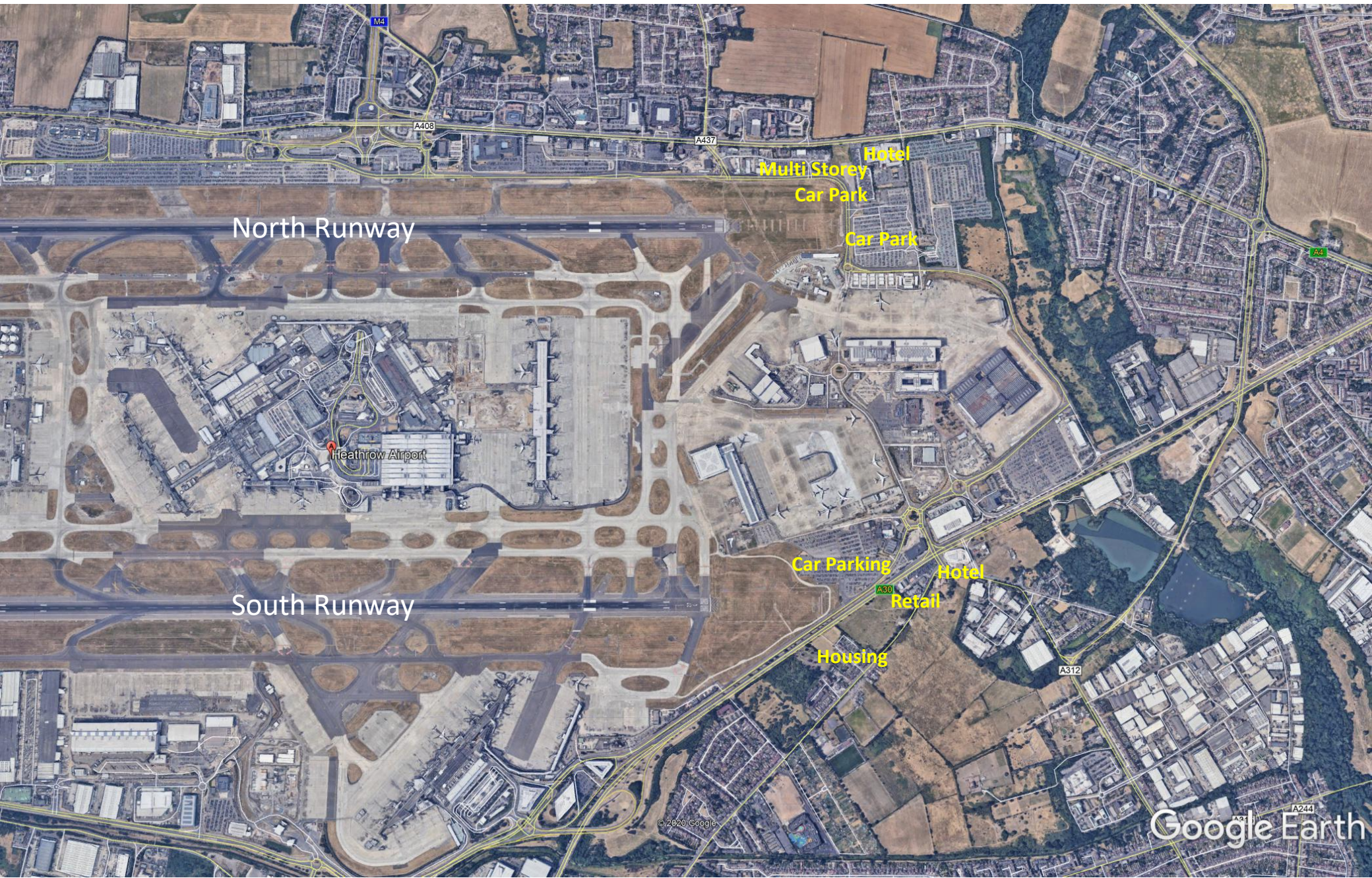


## Gatwick Airport, South Runway 26 – Proximity of car parks





# Heathrow Airport, Hounslow, UK.





3 Storey Premier Inn Hotel

4 Level Multi-storey Car Park

c. 520 metres

c. 485 metres

Surface Car Park

Northern Perimeter Rd

Eastern Perimeter Rd

Runway 27 R

Google Earth



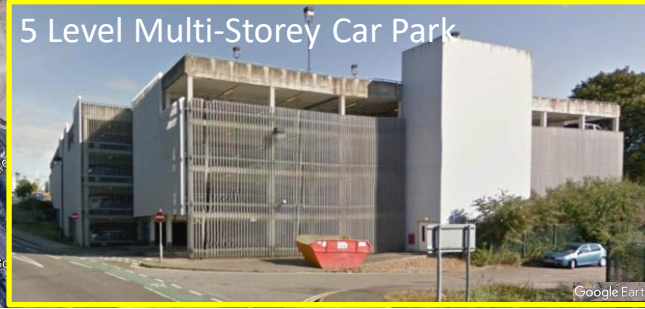


# South Runway 27L, Heathrow Airport – Proximity of car parks and buildings





## Luton Airport, Runway 08 – Proximity of car park and other uses



Google Earth

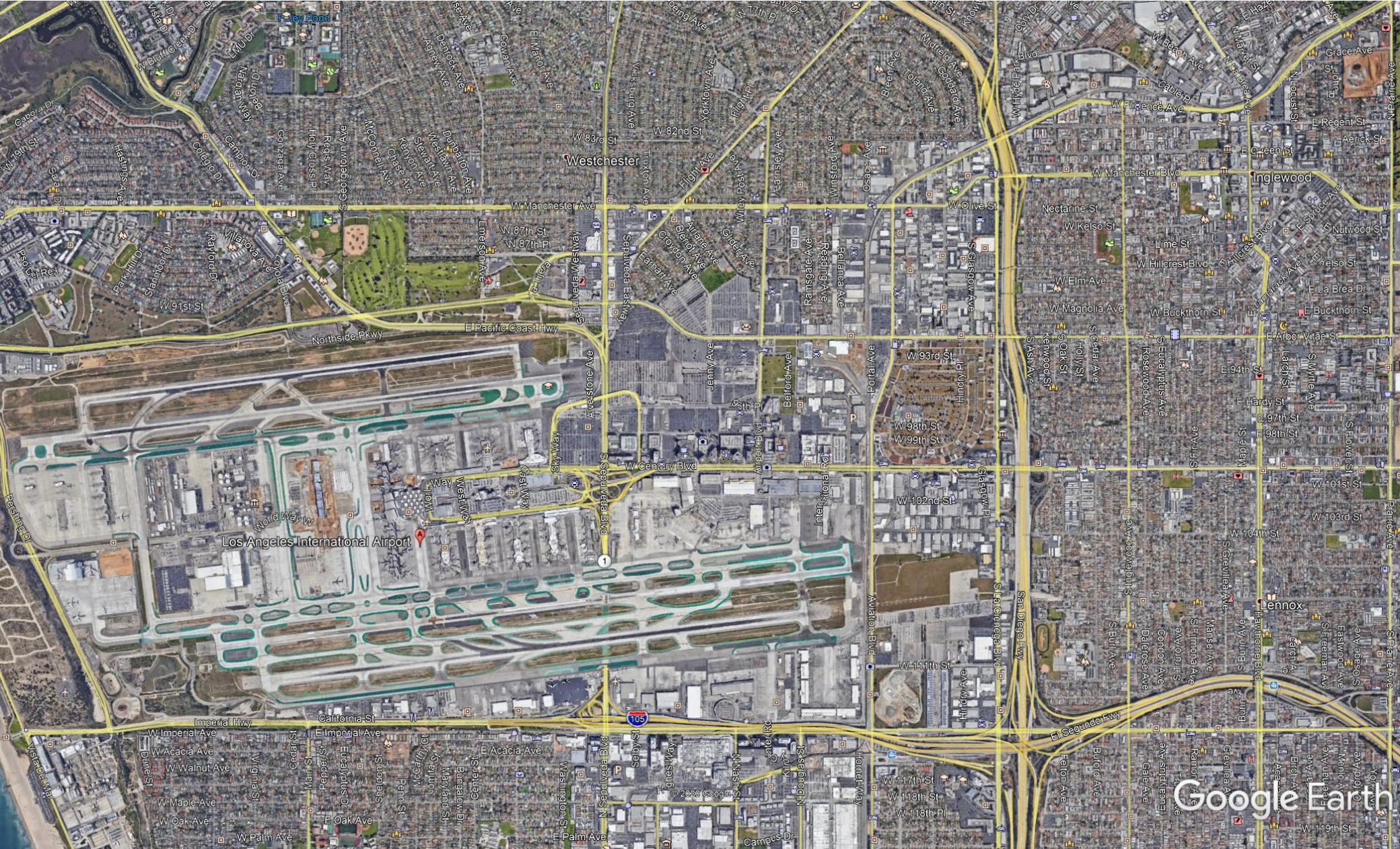


### Southampton Airport, Runway 08 – Proximity of car park and other uses



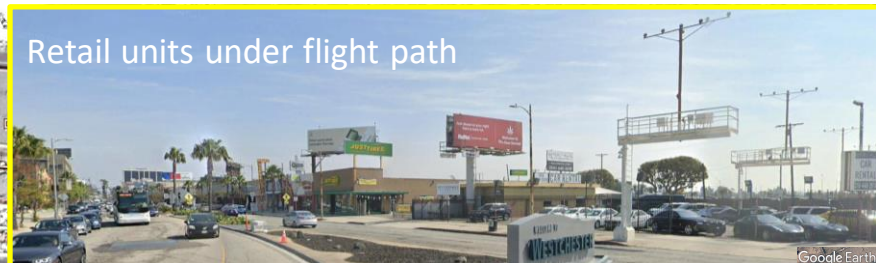


## Los Angeles (LAX) Airport, Proximity of car park and other uses





## Los Angles (LAX) Airport, North runways - Proximity of car park and other uses





## Los Angles (LAX) Airport, South runways - Proximity of car park and other uses

