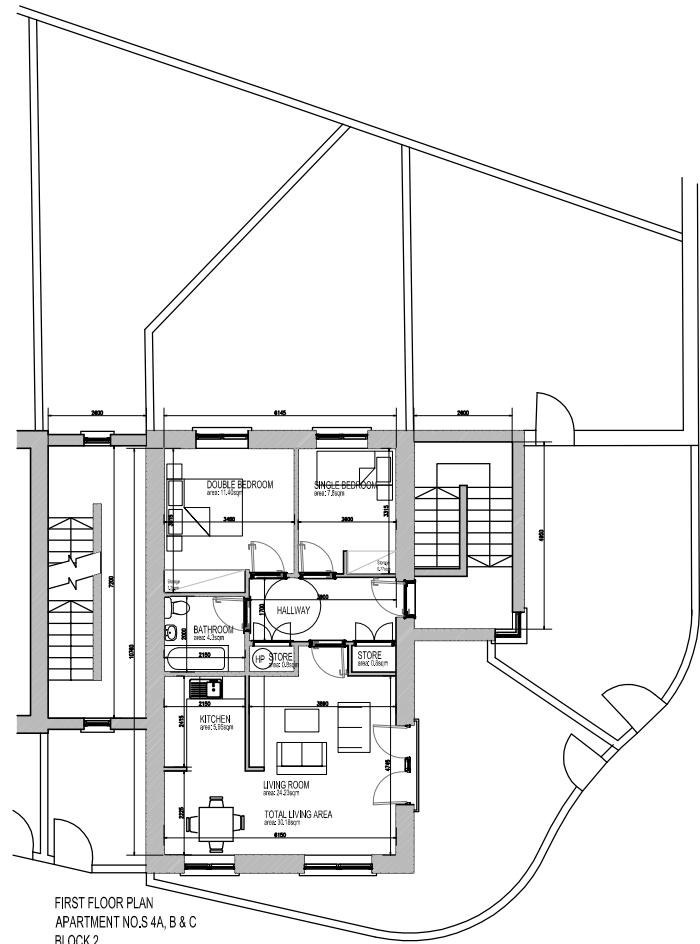
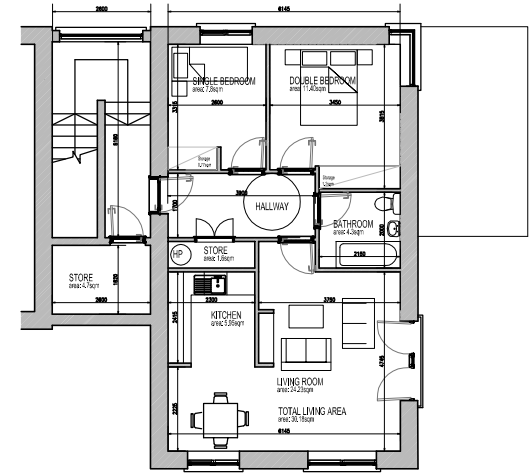
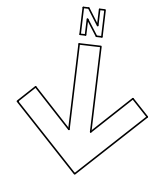


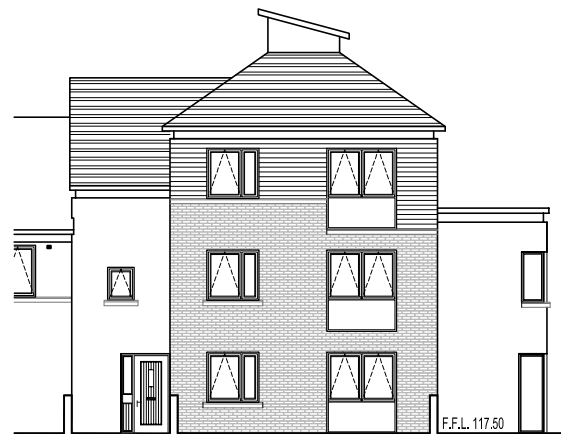
GROUND FLOOR PLAN  
APARTMENT NOS. 4A, B & C  
BLOCK 2



FIRST FLOOR PLAN  
APARTMENT NOS. 4A, B & C  
BLOCK 2



SECOND FLOOR PLAN  
APARTMENT NOS. 4A, B & C  
BLOCK 2



APARTMENT NOS. 4A, B & C - FRONT ELEVATION  
BLOCK 2



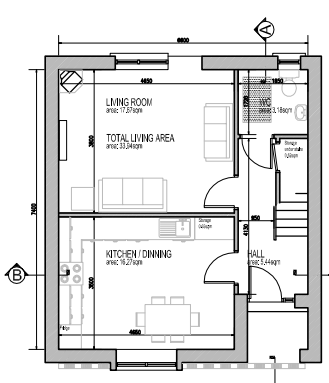
APARTMENT NOS. 4A, B & C - REAR ELEVATION  
BLOCK 2



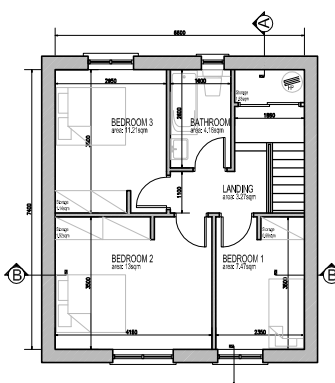
APARTMENT NOS. 4A, B & C - SIDE ELEVATION  
BLOCK 2

Apartment 4A			
2 bed 3 person apartments			
Ground floor plan			
Footprint: Ground	SqM	DOE	
	66.50	83.00 (+3.50)	
Total Storage	1.50	5.00 (+3.50)	
WC	4.30		
Living / Dining Room	22.98	13.00 (+9.86)	
Kitchen	5.34		
Aggregate Living Area	28.20	28.00 (+2.0)	
Bedroom 1	7.80		
Bedroom 2	11.40	11.40	
Aggregate Bedroom Area	19.20	20.00 (+0.80)	

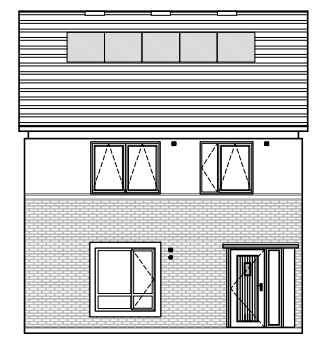
Apartments 4B & 4C			
2 bed 3 person apartments			
First & Second floor plans			
Footprint: Ground	SqM	DOE	
	66.50	83.00 (+3.50)	
Total Storage	1.60	5.00 (+3.40)	
WC	4.30		
Living / Dining Room	24.23	13.00 (+11.23)	
Kitchen	5.95		
Aggregate Living Area	30.18	28.00 (+2.18)	
Bedroom 1	7.80		
Bedroom 2	11.40	11.40	
Aggregate Bedroom Area	19.20	20.00 (+0.80)	



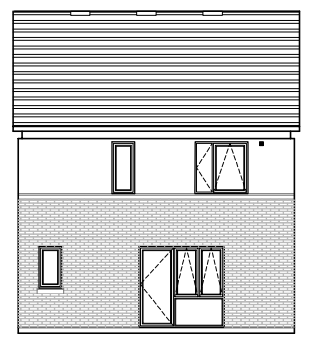
K5 - GROUND FLOOR PLAN



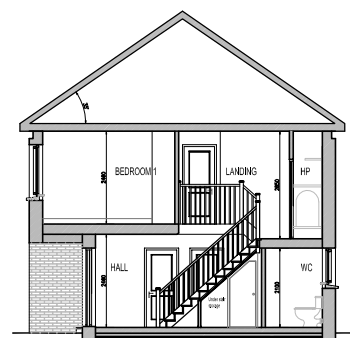
K5 - FIRST FLOOR PLAN



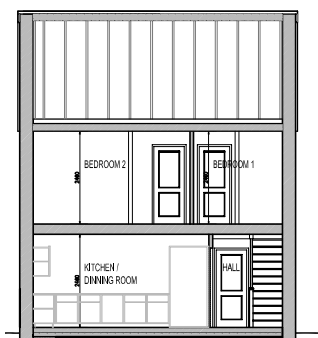
K5 - FRONT ELEVATION



K5 - REAR ELEVATION



K5 - SECTION A-A



K5 - SECTION B-B

K5 - House Description			
Preferred terrace type:			
Five person house unit.			
Area Statement			
GF Footprint	SqM	DOE	
	46.01		
FF Footprint	48.84		
Total GF+FF Area	94.85	92.00 (+2.85)	
Total Storage	4.99	5.00 (+0.01)	
GROUND FLOOR			
WC	3.18		
Living Room	17.67	13.00 (+4.67)	
Kitchen/Dining	16.27		
Aggregate Living Area	33.94	34.00 (+0.44)	
FIRST FLOOR			
Bed Room-1	7.47	7.10 (+0.37)	
Bed Room-2	13.00	13.00	
Bed Room-3	11.21	11.40 (+0.19)	
Aggregate BR area	31.68	32.00 (+0.32)	