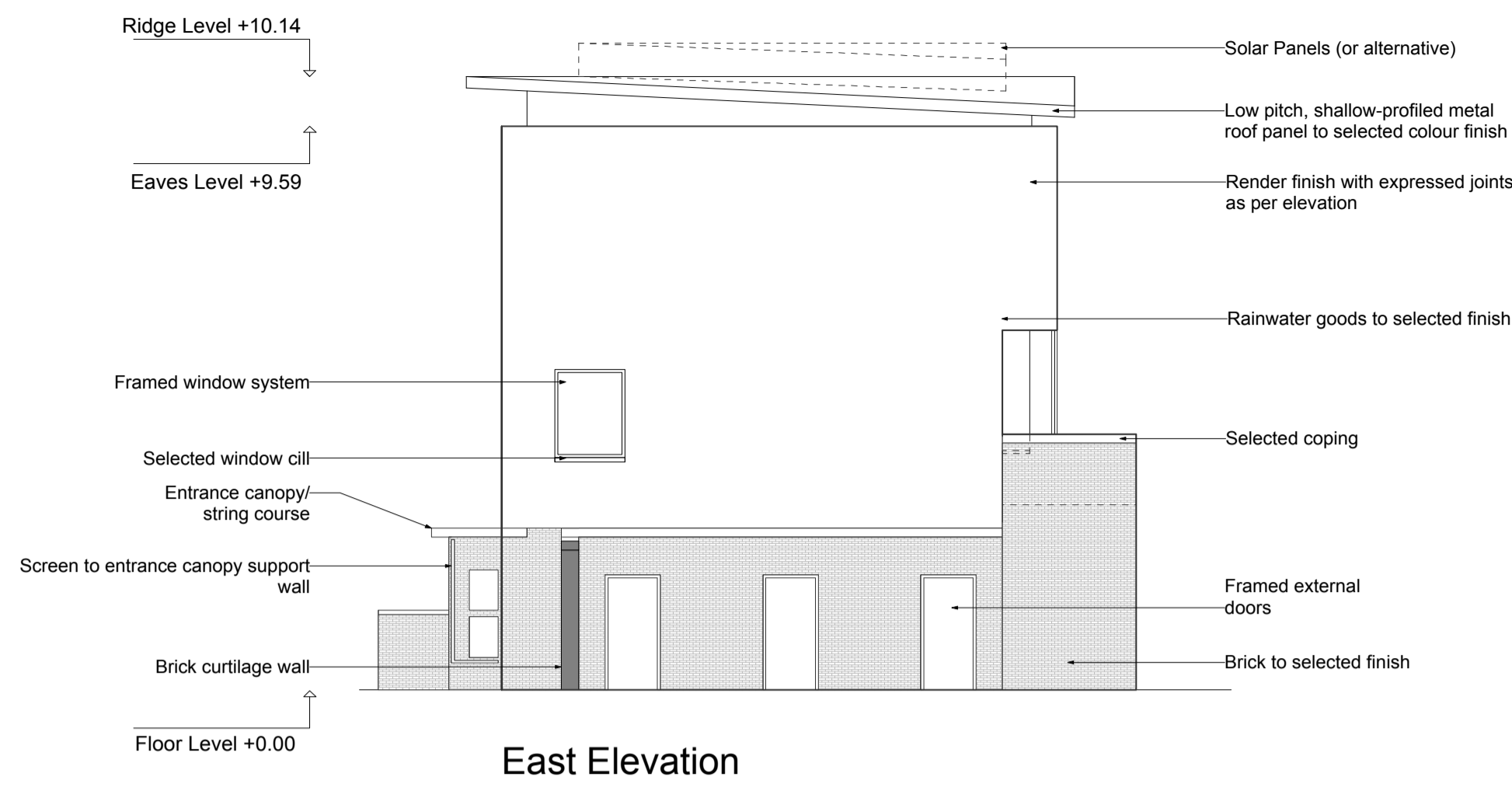
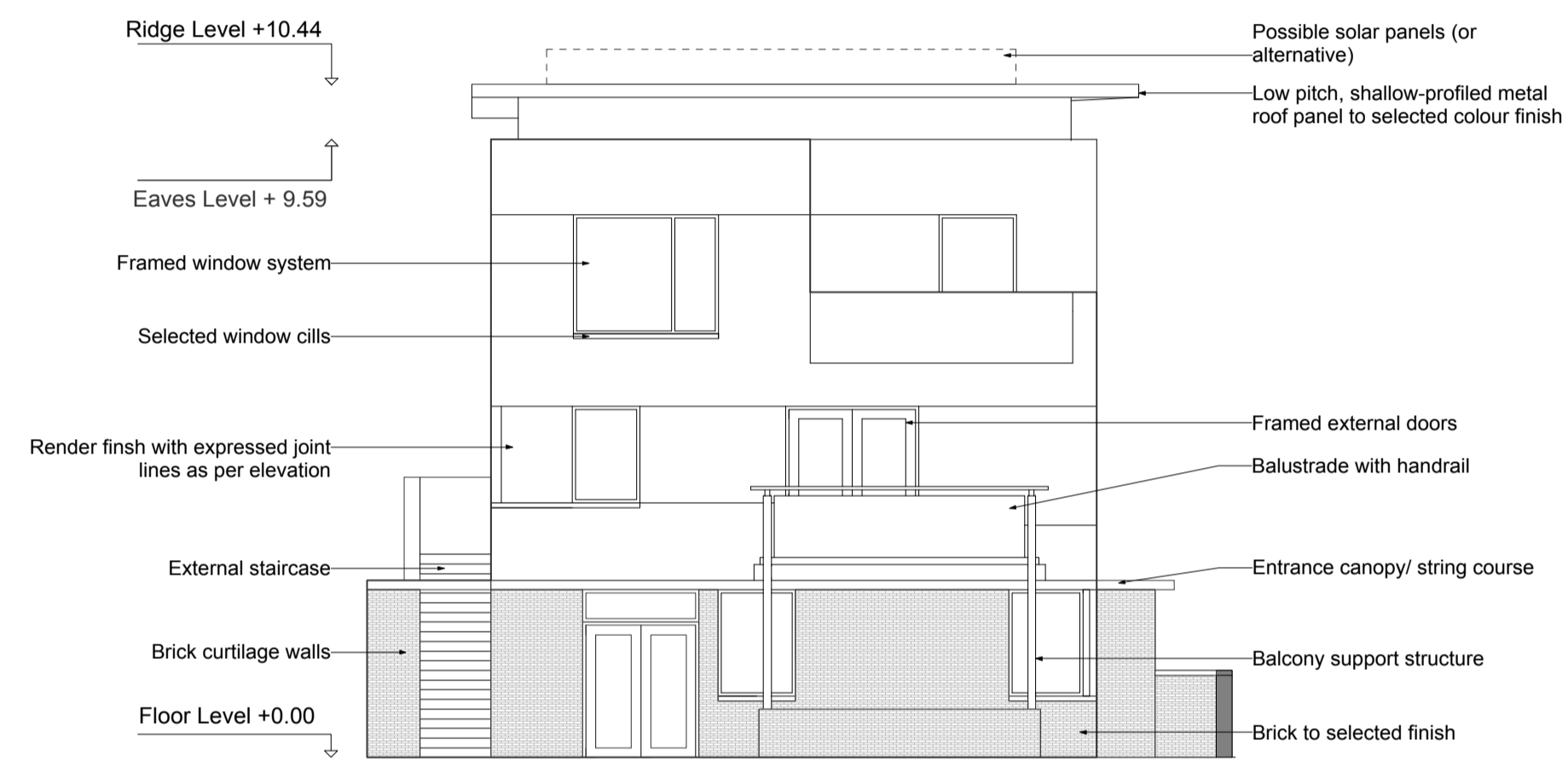


North Elevation



East Elevation

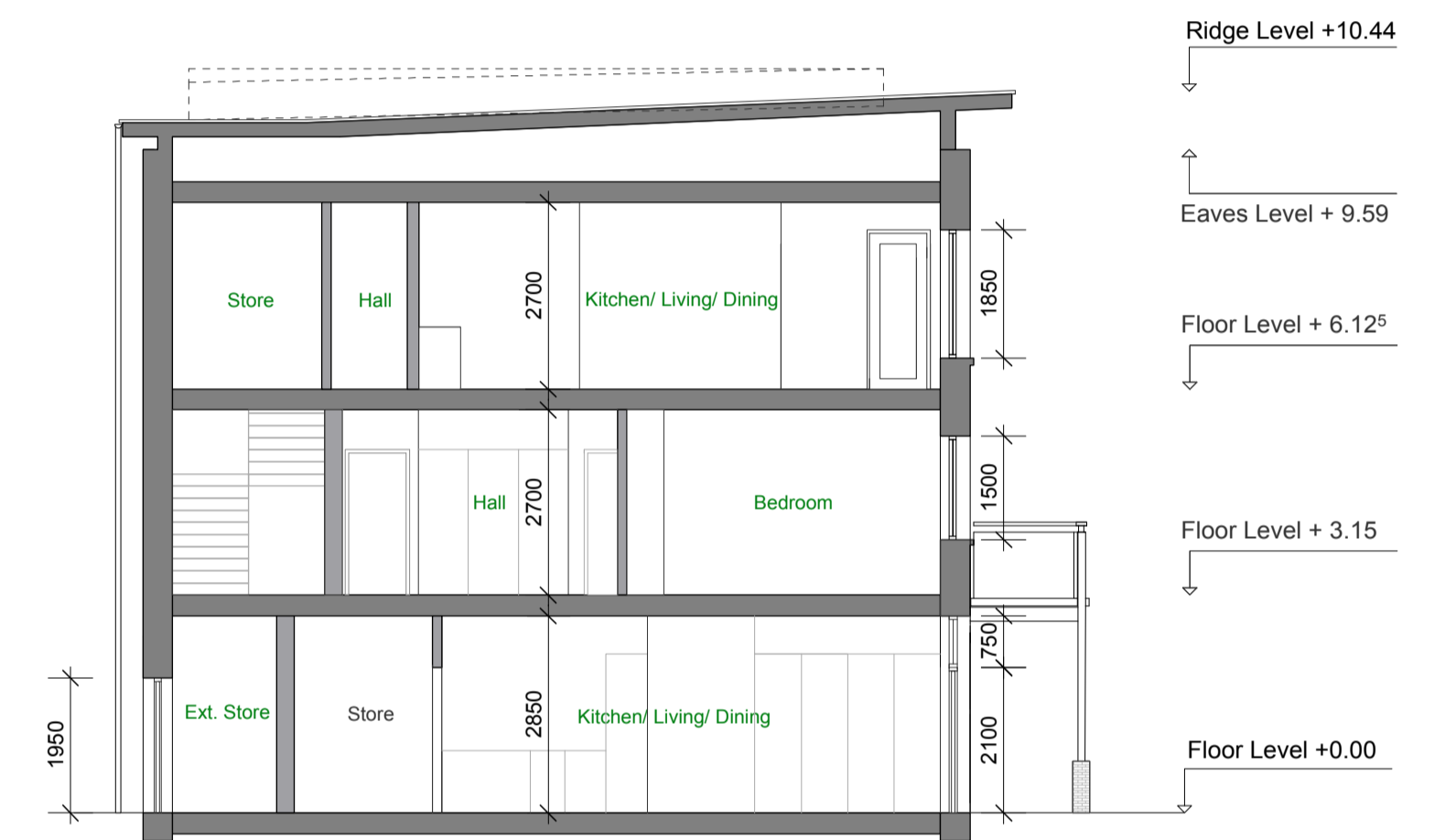


West Elevation

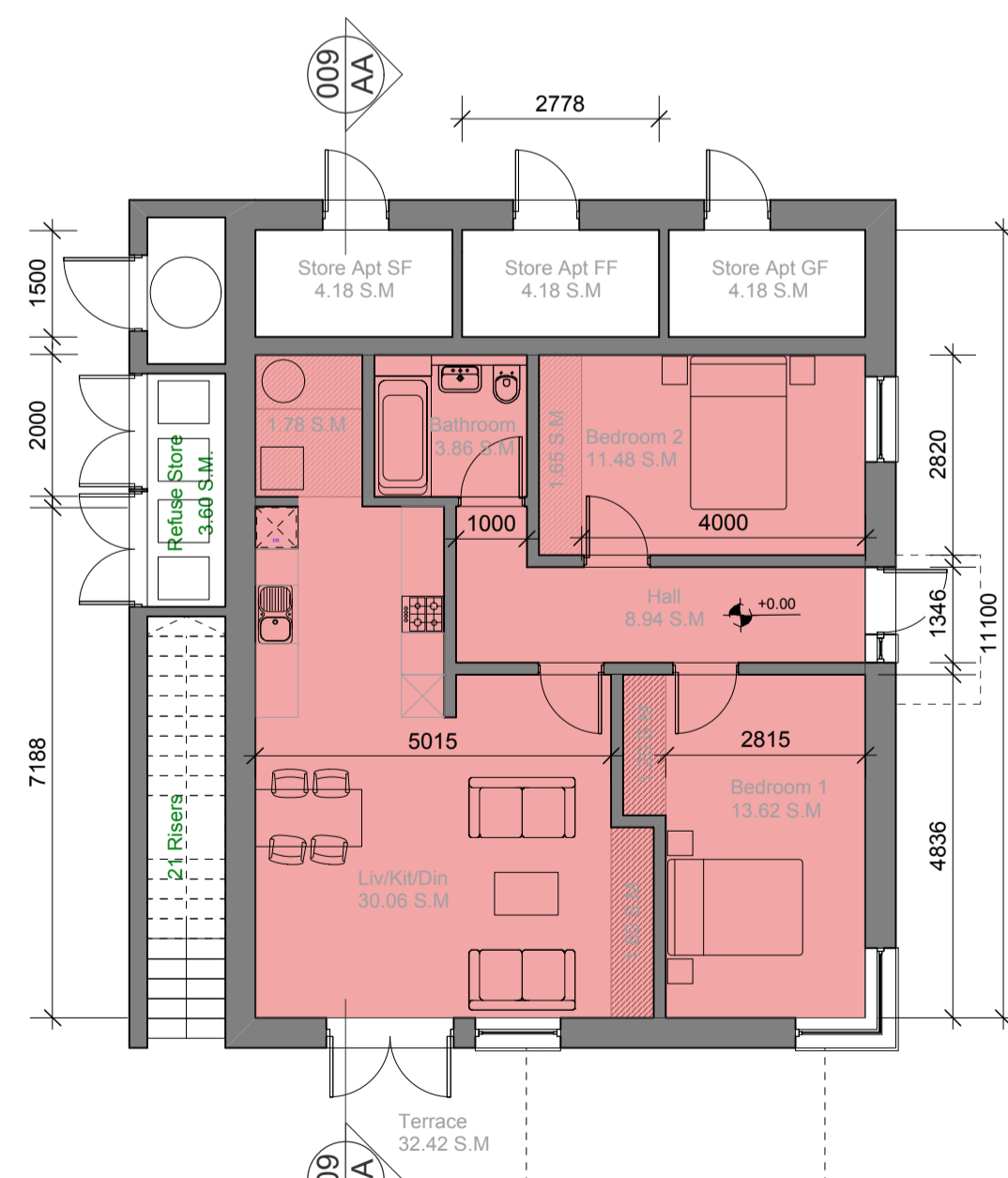


South Elevation

Allocation of individual building types indicated on sheet 326/COR/003B

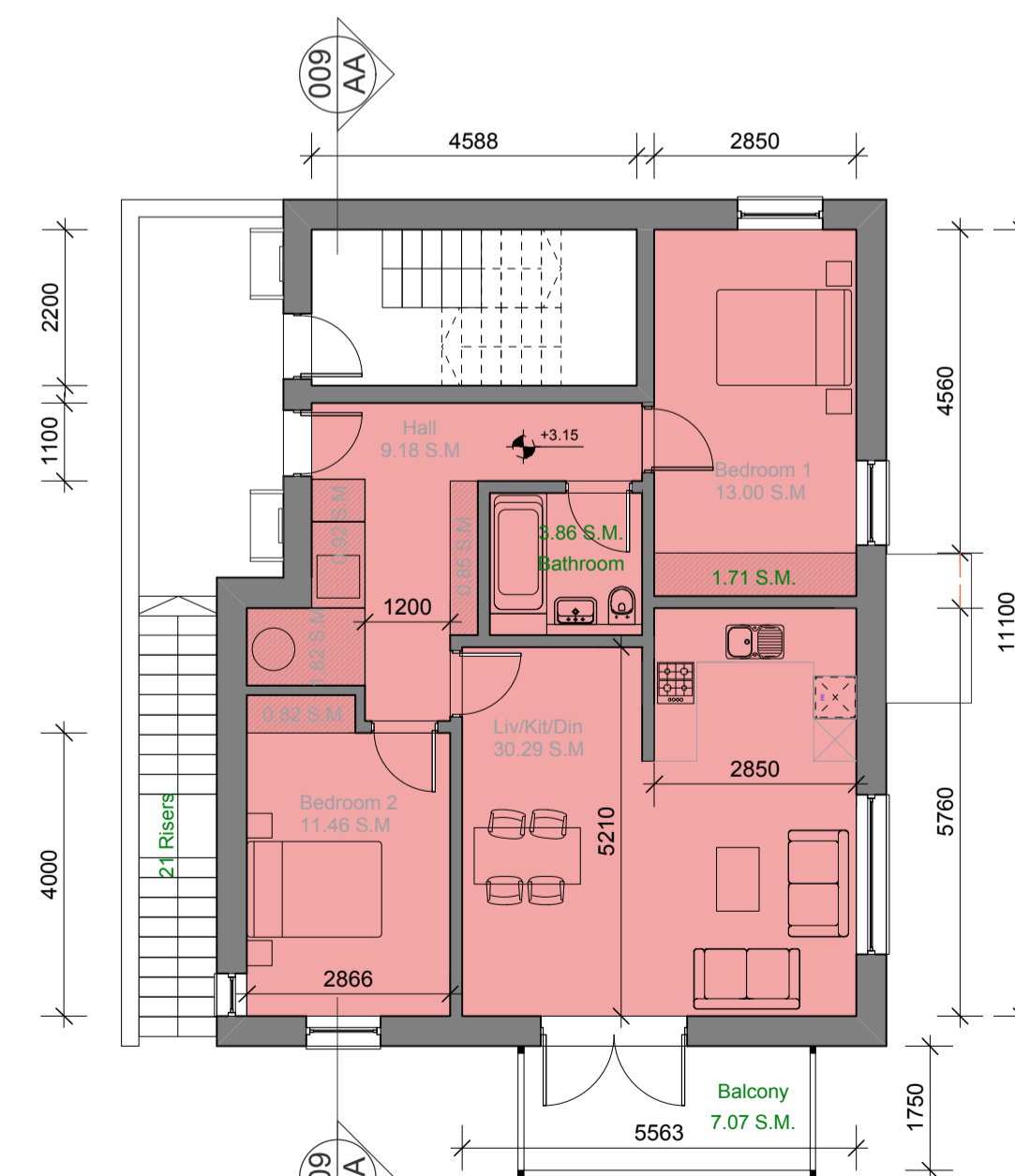


Cross-section A-A



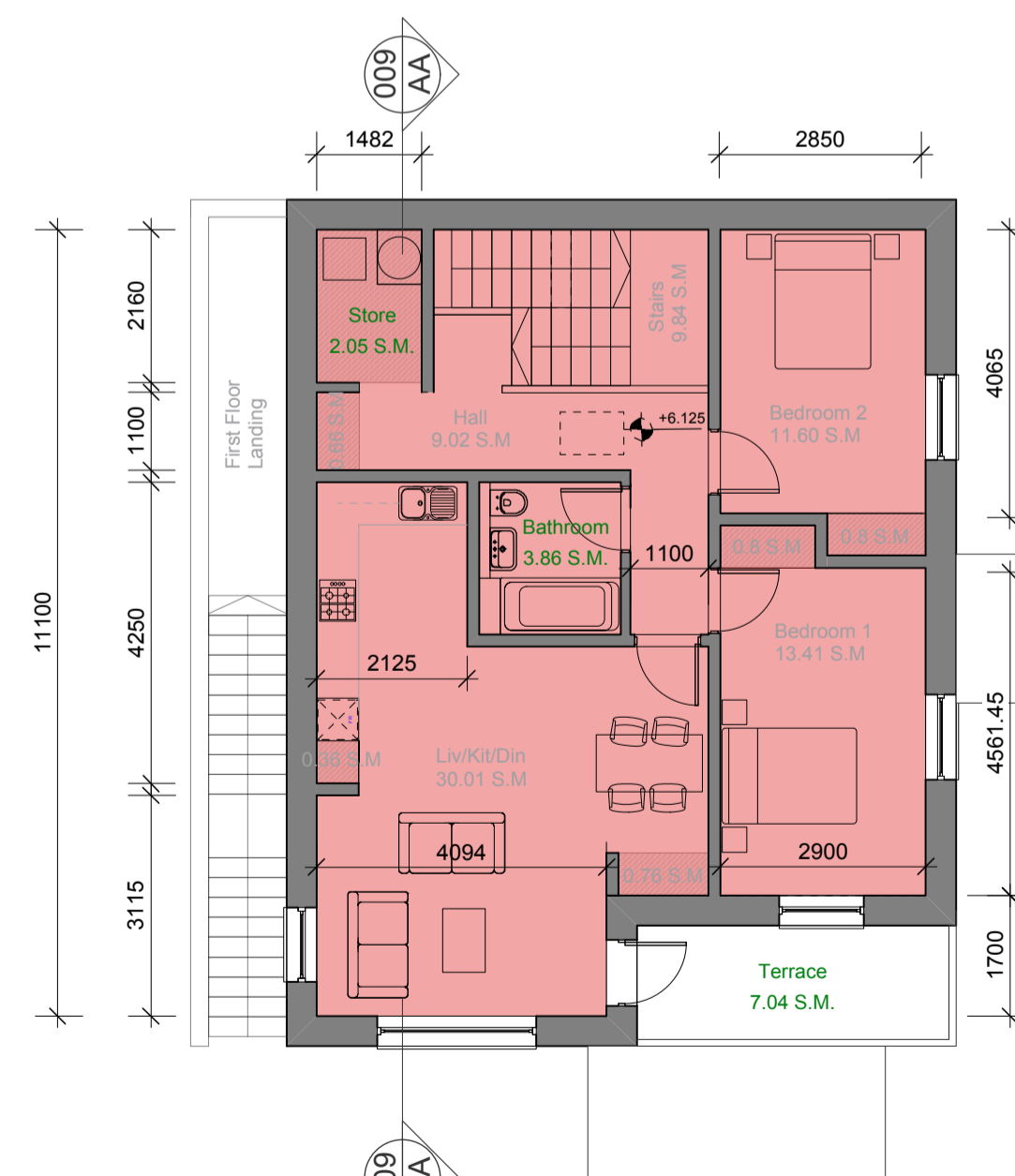
Ground Floor

GROUND FLOOR 2B/4P APT		
Room	Unit SQM	Min. SQM
Living		13.00
Kitchen		13.00
Aggregate	30.06	30.00
Bed		
Bed 1	13.62	13.00
Bed 2	11.48	11.40
Aggregate	25.10	24.40
Other		
Store (inside)	6.23	6.00
HWC	1.10	-
WC	0.00	-
Bathroom	3.86	-
Hall	8.94	-
Net Floor Area	75.28	73.00
Terrace	33.42	7.00
Ext. Store		4.18
Gross Floor Area	80.35	-



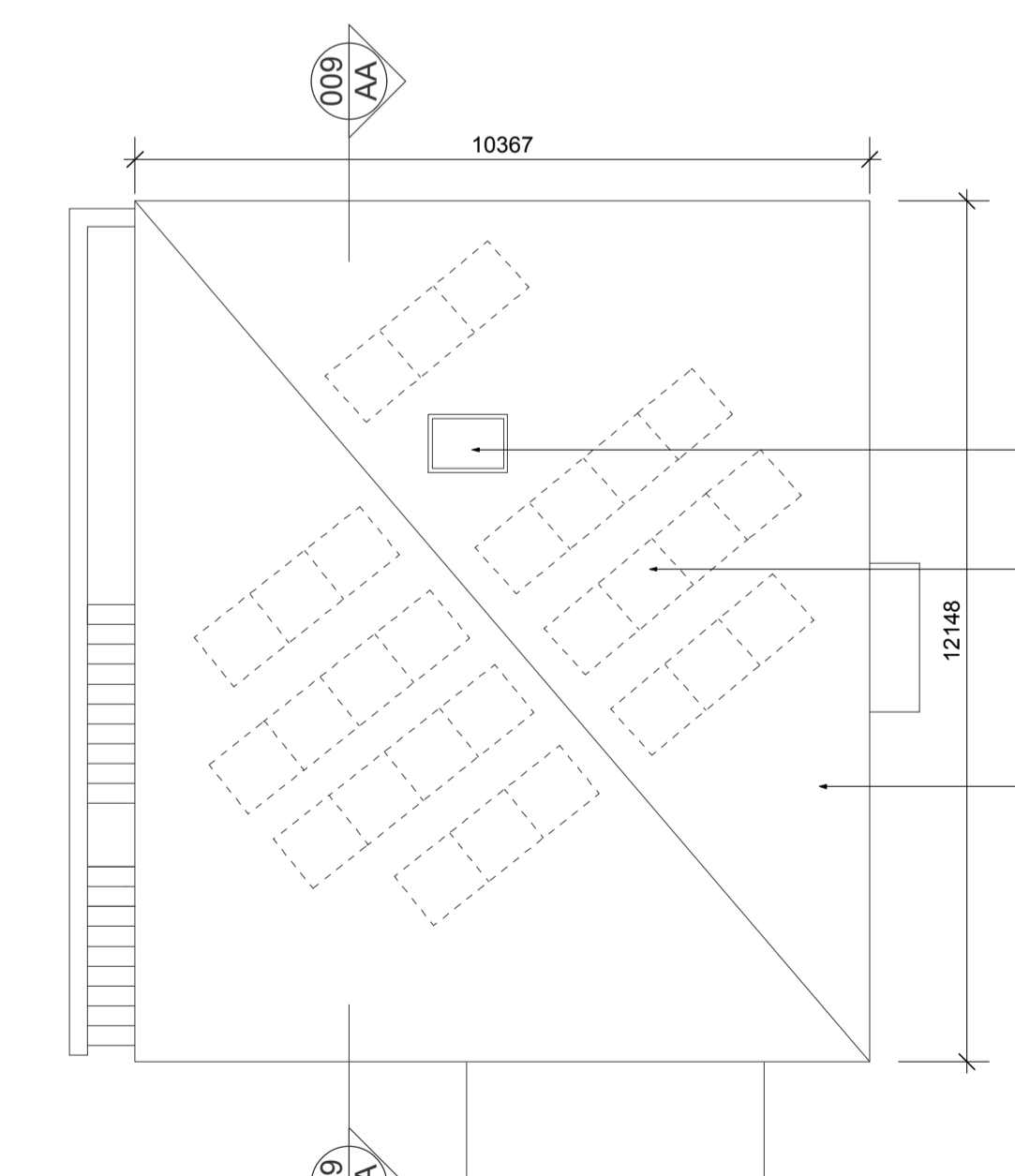
First Floor

FIRST FLOOR 2B/4P APT.		
Room	Unit SQM	Min. SQM
Living		13.00
Kitchen		13.00
Aggregate	30.29	30.00
Bed		
Bed 1	13.00	13.00
Bed 2	11.46	11.40
Aggregate	24.46	24.40
Other		
Store (inside)	6.12	6.00
HWC	0.45	-
WC	0.00	-
Bathroom	3.86	-
Hall	9.18	-
Net Floor Area	74.36	73.00
Balcony	7.07	7.00
Ext. Store		4.18
Gross Floor Area	78.75	-



Second Floor

SECOND FLOOR 2B/4P APT.		
Room	Unit SQM	Min. SQM
Living		13.00
Kitchen		13.00
Aggregate	30.01	30.00
Bed		
Bed 1	13.41	13.00
Bed 2	11.60	11.40
Aggregate	25.01	24.40
Other		
Store (inside)	6.10	6.00
HWC	0.48	-
WC	0.00	-
Bathroom	3.86	-
Hall	9.02	-
Stairs	9.84	-
Net Floor Area	84.32	73.00
Terrace	7.04	7.00
Ext. Store		4.18
Gross Floor Area	89.77	-



Roof Plan

REV	NOTES	DATE
A	Revised Draft	24/03/17
B	Final Planning Issue	10/05/17