

Safe School Zones

St. Ronan's National School Travel Survey Results

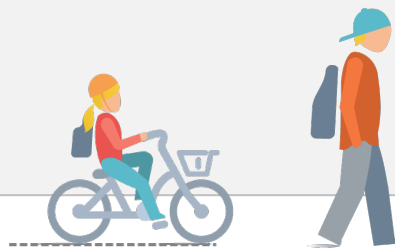
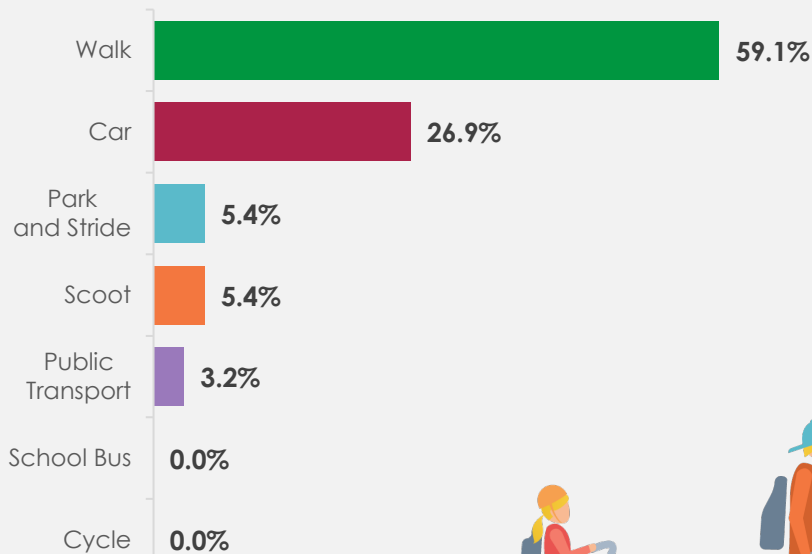
Results of Our Travel Survey

Responses received: 65

Students represented: 93

Our school has been selected to participate in the Safe School Zones project. The objective of the project is to improve safety at the school gate and to support students to safely walk, cycle and scoot to school. The results of the Travel Survey and support for the Safe School Zones project are presented below.

How We Travel To School



92.3% of respondents agreed that road safety is a problem around the school

100.0% of respondents would support works at the front of school that improve student safety

98.5% of respondents would support works that improve the walking and cycling routes to our school

Some key comments received

"Cars parking in front of school obstruct safe crossing and the school warden cannot safely view traffic to help children cross"

"It would be great to have designated safe crossing points for kids. A bike path would also be helpful since many children use bikes and scooters to get to school. Additionally, clearly visible parking areas near the school would improve safety. Currently, parked cars in the mornings and evenings reduce visibility, making it harder to cross the road safely."

Next Steps

SDCC will study the findings of the survey and develop a proposal for safety interventions at the school gate.

89.2%
support safer
crossing points

63.1%
want new or
improved
footpaths

56.9%
want reduced
traffic speed

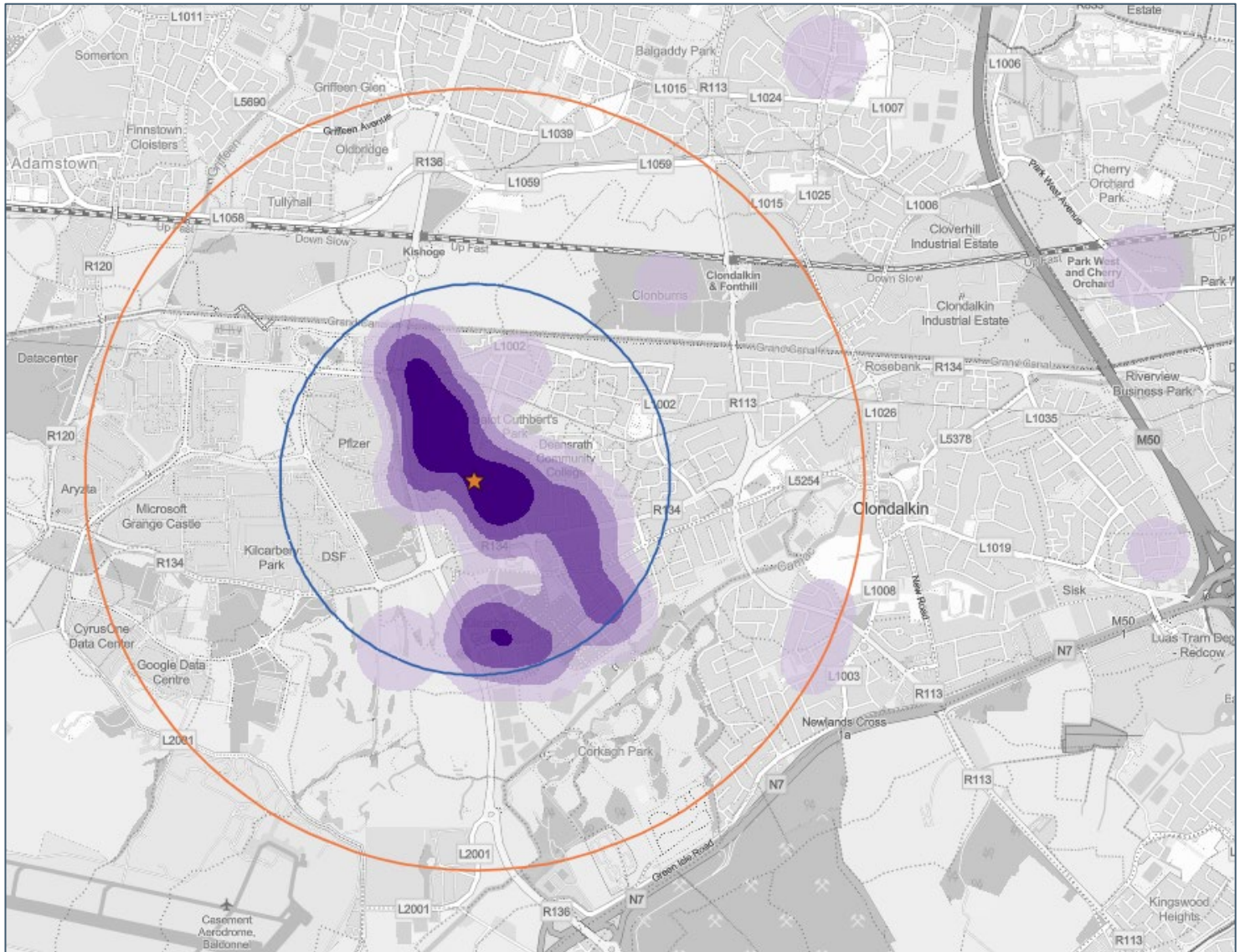
52.3%
want fewer
cars at the
school gate

Safe School Zones

St. Ronan's National School - Where We Are Travelling From

78.5% of students surveyed live within **1km** of the school

82.8% of students surveyed live within **2km** of the school



School location



1km radius



2km radius



Higher density of students travelling from this area



Lower density of students travelling from this area