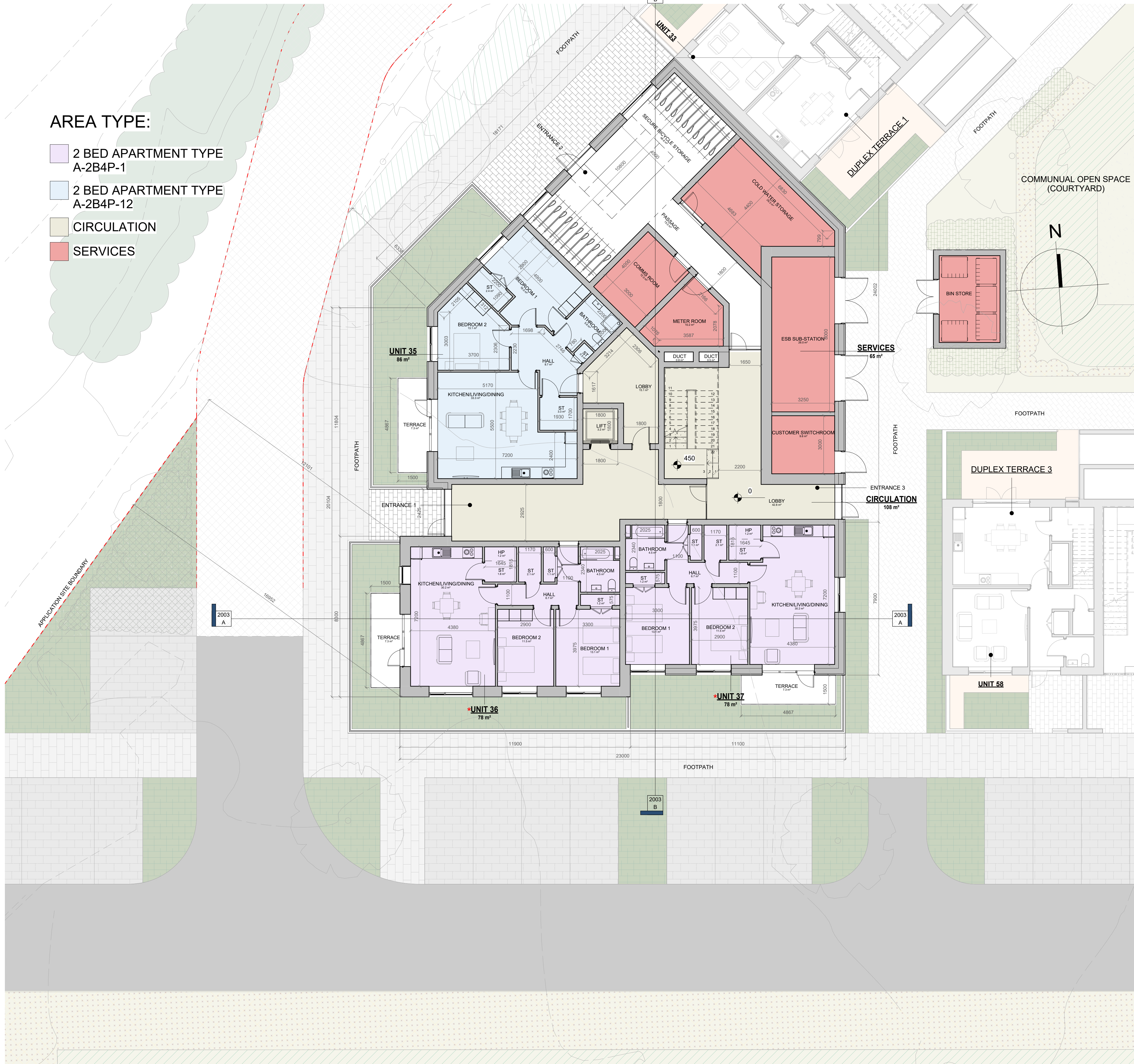


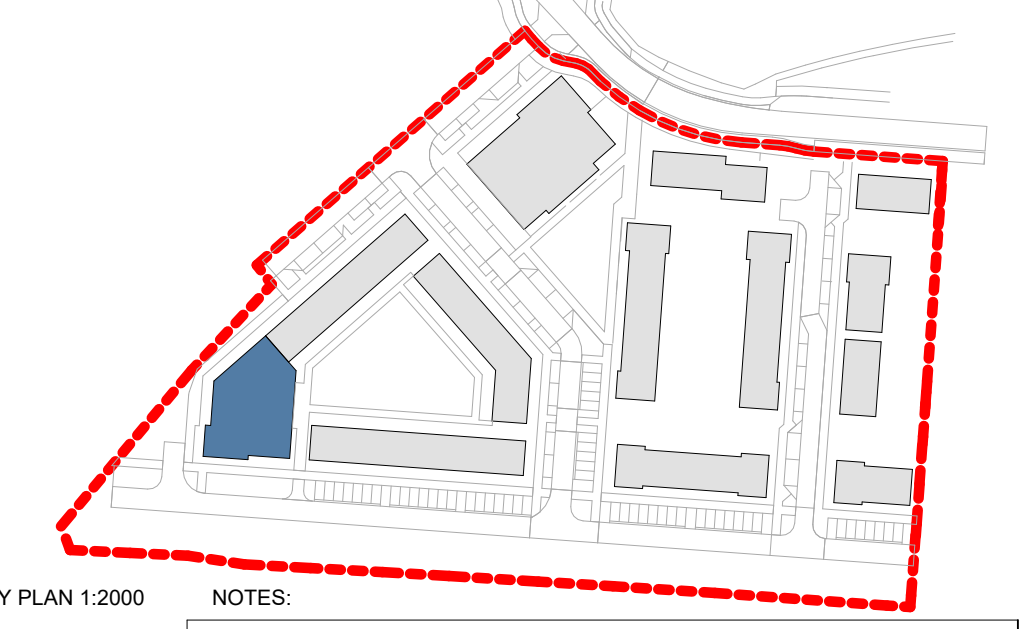
**AREA TYPE:**

- 2 BED APARTMENT TYPE A-2B4P-1
- 2 BED APARTMENT TYPE A-2B4P-12
- CIRCULATION
- SERVICES



**GENERAL NOTES**

DO NOT SCALE FROM DRAWINGS. WORK TO FIGURED DIMENSIONS ONLY. ARCHITECT TO BE NOTIFIED OF ANY DISCREPANCIES.  
 THIS DRAWING TO BE READ IN CONJUNCTION WITH ALL ARCHITECT'S DRAWINGS, SPECIFICATIONS CONSULTANTS DESIGN TEAM DRAWINGS AND SPECIFICATIONS.



**NOTES:**

PLEASE REFER TO MALONE O'REGAN CONSULTING ENGINEERS FOR ALL STRUCTURAL DRAWINGS AND DETAILS

PLEASE REFER TO SIMPLE MCKILLOP CONSULTING ENGINEERS DRAWINGS FOR ALL MECHANICAL & ELECTRICAL DETAILS for the following:-

- All proposed Mechanical Ventilation details
- AOV's min clear opening 1.5m<sup>2</sup> to specialist details
- SVP drop locations & details
- Electrical layout & Lift Services specification
- Fire detection system specification & details throughout
- Escape lighting specification & details & exit SIGNAGE

**IMPORTANT NOTE:**  
 PLEASE REFER TO MITCHELL ASSOCIATES DRAWINGS/ REPORT FOR LANDSCAPING DETAILS

**NOTE:**  
 As an alternative to the foregoing, products which satisfy the equivalent European standards in TDG Part B 2022 may be used.

Allow for a 300x300mm access hatch in each apartment for hv unit maintenance

**NOTE 1:**  
 All pipes passing through fire resisting construction to be firestopped.

Please read in conjunction with MCORM detail drawings and specifications.

Area Schedule (Apartment Area)		
Apartment Type	Area	Count
2 BED APARTMENT TYPE A-2B4P-1		
2 BED APARTMENT TYPE A-2B4P-1	78 m <sup>2</sup>	17
2 BED APARTMENT TYPE A-2B4P-12		
2 BED APARTMENT TYPE A-2B4P-12	86 m <sup>2</sup>	6
<b>TOTAL:</b>		<b>23</b>

**NO. OF FLOORS: 6 STOREYS**

<b>GROUND FLOOR:</b>		
BICYCLE STORES	: 25	SPACES
GROSS AREA	: 2 515m <sup>2</sup>	RESIDENTIAL
NET AREA	: 1 842m <sup>2</sup>	RESIDENTIAL

**LEGEND**

<span style="color: red;">*</span>	DUAL ASPECT UNIT
<b>UNIT X</b>	UNIT NUMBER
<b>Xm<sup>2</sup></b>	UNIT AREA m <sup>2</sup>
	LEVEL HEIGHT
ST	STORAGE
---	OUTLINE OF STRUCTURE ABOVE

REV	DATE	DESCRIPTION	JH
A	28/06/2024	General Updates	JH

ISSUED BY: JH

**FOR PLANNING**

CLIENT: NDFA on behalf of South Dublin County Council

PROJECT TITLE: Proposed Part 8 Residential Development Kishoge, Lucan

DRAWING TITLE: APARTMENT BLOCK A- GROUND FLOOR PLAN

DRN BY: JH	CHK BY: PMcN	SCALE @ A1: 1:100	DATE: 28/06/2024	REVISION: A	JOB NO: 23004
DRAWING NUMBER: SHB5-CSD-DR-MCORM-AR-P3-1101					STATUS CODE: P3

**MCORM**  
 ARCHITECTURE AND URBAN DESIGN

No.1 Grantham Street, Dublin 8  
 D08 A69Y Tel: +353 (0)1 478 8700  
 Block 6, Central Business Park  
 Tallamore, County Offaly  
 R35 F9F8 Tel: +353 (0)7 932 3867  
 website: www.mcorm.com  
 email: arch@mcorm.com

Figured dimensions only to be used. This drawing is copyright of MCORM Ltd. All information is shared as per approved use in accordance with I.S. RA-2021 to I.S. EN ISO 19550-2: 2018. If 'Status Code' above is empty, this information has been shared as Status Code S0 - Work in Progress (WIP) / Draft.