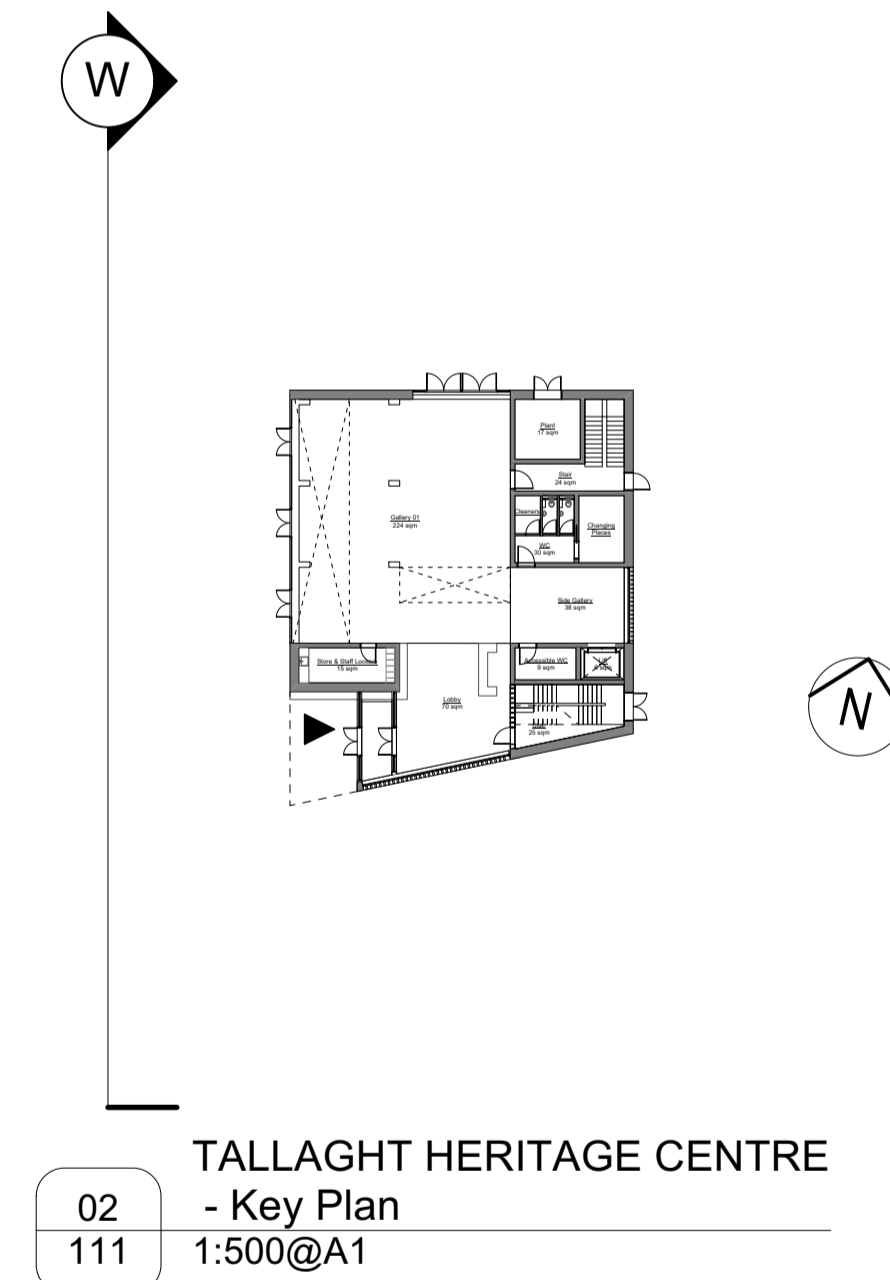


KEY

1. RECYCLED SINUSOIDAL METAL CLADDING
2. ALUMINIUM GLAZING SYSTEM
3. ALUMINIUM GLAZING SYSTEM WITH ALUMINIUM FINIS
4. GLAZED DOOR
5. DOOR CLAD IN SINUSOIDAL METAL CLADDING
6. OPERABLE WINDOW FOR VENTILATION
7. FRITTED GLASS OR GLASS WITH MANIFESTATION
8. SIGNAGE SUBJECT TO LATER DESIGN
9. GATE AND ENTRANCE TO BE MAINTAINED

1 West Elevation - Proposed
111 1:100@A1



mcculloughmulvinarchitects
16 molesworth street, dublin 2, Ireland
t: +353 1 707 9555 www.mcculloughmulvin.com
f: +353 1 707 1912 info@mcculloughmulvin.com

"COPYRIGHT AND OWNERSHIP OF THIS DRAWING IS VESTED IN MCCULLOUGH MULVIN WHOSE PRIOR WRITTEN CONSENT IS REQUIRED FOR ITS USE. REPRODUCTION OR FOR PUBLICATION TO ANY THIRD PARTY. ALL RIGHTS RESERVED BY THE LAW OF COPYRIGHT AND BY INTERNATIONAL COPYRIGHT CONVENTIONS ARE RESERVED TO MCCULLOUGH MULVIN AND MAY BE PROTECTED BY COURT PROCEEDINGS FOR DAMAGES AND/OR INJUNCTIONS AND COSTS."
DO NOT SCALE THIS DRAWING. ALL WRITTEN DIMENSIONS ARE IN MILLIMETRES. ANY INCONSISTENCIES TO BE REPORTED TO THE ARCHITECT IMMEDIATELY.
© MCCULLOUGH MULVIN 1999

PART 8 SUBMISSION

OS MAP
Map Series | Map Sheets
1:1000 3390-11
1:1000 3390-06

REV	DATE	BY	DESCRIPTION
P01	28.07.2023	DdeCMD	DRAFT FOR SDCR REVIEW
P02	04.08.2023	PB	PART 8 SUBMISSION

DRAWN PB	PROJECT TALLAGHT HERITAGE CENTRE, Old Blessington Road, Tallaght, D24	SCALE 1:100 @ A1	DRAWING NUMBER
CHECKED ROH	CLIENT SOUTH DUBLIN COUNTY COUNCIL	DATE AUGUST 2023	
DRAWING TITLE West Elevations - Proposed			

THC-P-111	P02
------------------	------------