

ZONE 2

TREE GROUP 7

TREE GROUP 8

TREE GROUP 7

TREE GROUP 8

TREE GROUP 6

TREE GROUP 5

TREE GROUP 5

TREE GROUP 4

LEGEND TREE CONDITION CATEGORIES

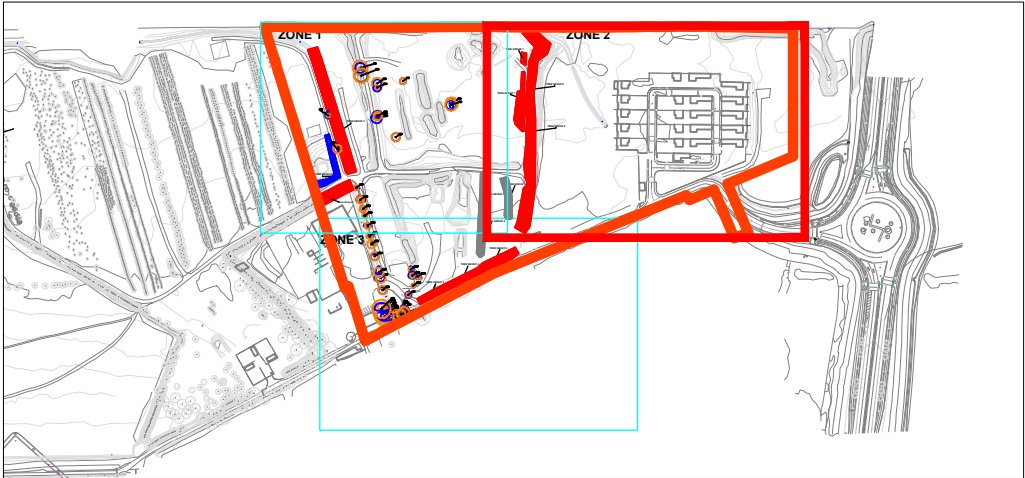
- A TREES OF HIGH VALUE AND QUALITY
- B TREES OF MODERATE VALUE AND QUALITY
- C TREES OF LOW QUALITY AND VALUE
- U TREES OF VERY LOW QUALITY AND VALUE
RECOMMENDED FOR REMOVAL
- TREE CONSTRAINTS

SITE BOUNDARY

Drawing to be interpreted with reference
to Tree Survey document

Tree constraints shown are calculated
from guidelines contained within BS5837
(2012) with dimensions contained within
Section 8 of the Tree Survey document.
This outline should not be interpreted as
the exact extent of root spread however it
is considered the optimal area to be
retained free of developmental impacts.
Natural and/or man made barriers such
as waterlogged soil or buildings may
restrict the spread of tree roots. Crown
spreads may also prove to be a constraint
particularly where crown reduction may
not be possible.

The constraints lines shown on this
drawing are therefore a guide only. An
on-site assessment should be undertaken
in the event of any developments being
planned within the areas shown for
retained trees.



Comhairle Contae
Átha Cliath Theas
South Dublin County Council

Metropolitan
Workshop
Architecture + Urbanism

REVISIONS		
REV	DATE	DESCRIPTION
A	11.04.22	REVISED LAYOUT
PROJECT: CLONBURRIS STRATEGIC DEVELOPMENT ZONE (SHD)		JOB NO. TCL0002
DRAWING: TREE SURVEY AND CONSTRAINTS 2 OF 3		DATE: 11-04-22 SCALE: 1:500 @ A1
DRAWN BY: CIARAN KEATING		CK INITIALS
STATUS: PLANNING		
DRAWING NO:105		
NOTES Do-Not Scale. Use Figured Dimensions Only. Not for Construction Purposes unless Specifically Marked		
© THIS DRAWING IS COPYRIGHT OF CMK HORTICULTURE + ARBORICULTURE LTD.		

CMK
Horticulture & Arboriculture