

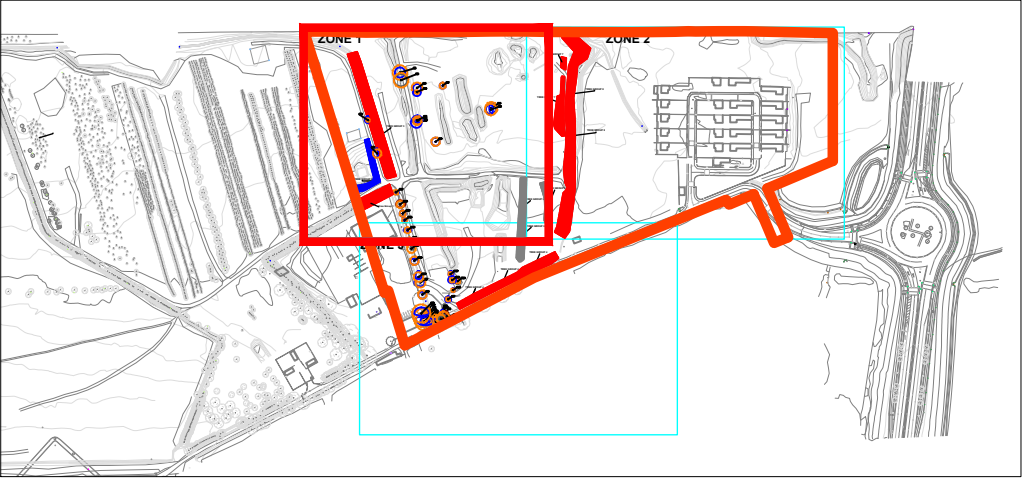
LEGEND

TREE CONDITION CATEGORIES

- A TREES OF HIGH VALUE AND QUALITY
- B TREES OF MODERATE VALUE AND QUALITY
- C TREES OF LOW QUALITY AND VALUE
- D TREES OF VERY LOW QUALITY AND VALUE RECOMMENDED FOR REMOVAL
- TREE CONSTRAINTS
- SITE BOUNDARY

Drawing to be interpreted with reference to Tree Survey document.

Tree constraints shown are calculated from guidelines contained within BS5837 (2012) with dimensions contained within Section 8 of the Tree Survey document. This outline should not be interpreted as the exact extent of root spread however it is considered the optimal area to be retained free of developmental impacts. Natural and/or man made barriers such as waterlogged soil or buildings may restrict the spread of tree roots. Crown spreads may also prove to be a constraint particularly where crown reduction may not be possible. The constraints lines shown on this drawing are therefore a guide only. An on-site assessment should be undertaken in the event of any developments being planned within the areas shown for retained trees.



Comhairle Contae
Átha Cliath Theas
South Dublin County Council

Metropolitan
Workshop
Architecture + Urbanism

REVISIONS		
REV	DATE	DESCRIPTION
A	11.04.22	ADDITIONAL TREES
PROJECT:		
CLONBURRIS STRATEGIC DEVELOPMENT ZONE (SHD)		JOB NO. TCL0002
DRAWING:		DATE:
TREE SURVEY AND CONSTRAINTS 1 OF 3		11-04-22
SCALE:		1:500 @ A1
DRAWN BY: CIARAN KEATING		CK
STATUS: PLANNING		INITIALS
DRAWING NO:104		
NOTES		
Do Not Scale. Use Figure Dimensions Only. Not for Construction Purposes unless Specifically Marked.		
© THIS DRAWING IS COPYRIGHT OF CMK HORTICULTURE + ARBORICULTURE LTD.		

