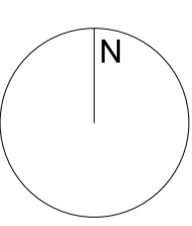


HT5 - 4 Bedrooms/7 Person (Aff. Purchase)		
Req. Min. Standards	Min.	Achieved
-Min. overall floor area	120.0 m ²	130.5 m ²
-Min. aggregate bedroom area	43.0 m ²	43.0 m ²
-Min. living/dining/kitchen area	40.0 m ²	41.0 m ²
-Min. storage area	6.0 m ²	6.3 m ²
-Min. area of living	15.0 m ²	15.2 m ²
-Min. area of master bedroom	13.0 m ²	13.0 m ²
-Min. area of double bedroom	11.4 m ²	11.4 m ²
-Min. area of double bedroom	11.4 m ²	11.4 m ²
-Min. area of single bedroom	7.1 m ²	7.2 m ²
-Min. width of living	3800	3850
-Min. width of master bedroom	2800	3448
-Min. width of double bedroom	2800	2850
-Min. width of double bedroom	2800	3075
-Min. width of single bedroom	2100	2478



PLANNING

Revision	Date	Description	Issued	Checked
P1	15/03/2022	Issued for Pre-Part 8 Planning Application	AOD	SC
P2	13/04/2022	Issued for Part 8 Planning Application	AOD	SC



Notes
Do not scale drawings. All dimensions should be checked on site. Errors to be reported to architect. To be read in conjunction with all relevant architects services and engineers drawings.
Contractors, sub-contractors and suppliers must verify any critical dimensions on site prior to fabrication of any building element. Any discrepancies are to be reported to the architect.
This drawing should be read in conjunction with all relevant specifications, engineers and specialists consultants information. Any discrepancies must be reported prior to installation.



Metropolitan Workshop
Tower 2, Fumbally Lane
Dublin
D08 N2N8
00 353 (0)1 531 4889
www.metwork.ie

Project:	Clonburris Phase 01															
Client:	SDCC															
Location:	Clonburris, Co.Dublin															
Title:	HT5 Unit Layout Plans															
Current Revision Issue Date:	13/04/2022															
Scale:	As indicated @ A1															
Project	2015	Originator	MET	Volume	05	Level	xx	Type	DR	Reference	A	Subsidiary	121051	Revision	S4	P2