

School Travel Survey: St Mark's Junior and Senior National Schools

Making the 'school run' safer and more enjoyable, and promoting active travel

This flyer summarises feedback from surveys and conversations with students, parents, staff and the wider community on how we might promote safer travel, walking and cycling in St Mark's Junior and Senior National Schools. The feedback was gathered by M-CO, working on behalf on South Dublin County Council.

The council have funding for measures to help tackle issues of congestion and road safety around the school and to promote active travel. To make sure the best solution is identified, they need to understand:

- how people are getting to school now,
- how they'd like to travel to school
- feedback on actions that could be taken to improve safety and promote walking / cycling (e.g. better road crossings, marked walking & cycling routes, traffic calming, bollards)
- other ideas, hopes and concerns

1000 pupils enrolled in
St. Mark's NS

Pupils' Hands-up Survey: 410

Parents Survey: 198



- 53% of pupils travel by car
- 36% of pupils walk to school
- 2% of pupils cycle to school
- 57% of pupils live under 1 km from the school
- 66% of parents think that traffic and parking is a problem

Benefits of Taking Action

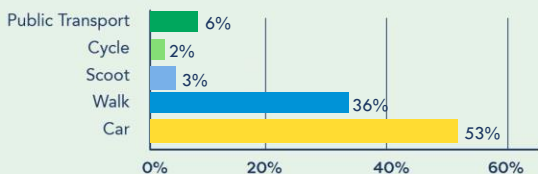
The works aim to make a safer, calmer and better environment outside the school along with promoting more cycling and walking. This can:

- reduce traffic congestion
- make it easier and more attractive to cycle, walk or scoot to school
- create a safer and more welcoming environment around the school
- reduce environmental impact by lowering carbon emissions and air pollution from car travel and improving biodiversity in the vicinity
- help children meet their wishes to walk and cycle to our school

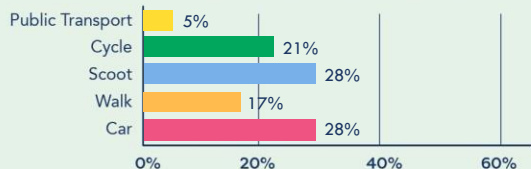
How are people travelling to school?

We asked pupils and parents how they got to and from school and what their preferred travel mode would be.

How we travel now



How we'd like to travel

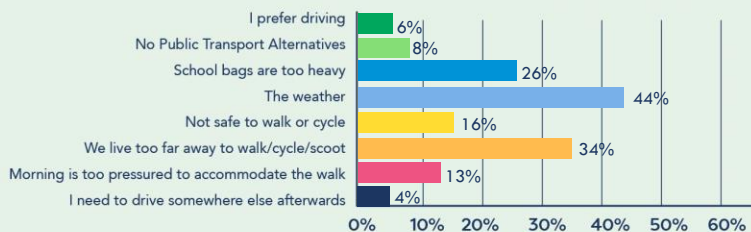


"We would love to cycle but there are no cycle lanes and traffic around the school is crazy especially on wet days"

"There is no safe place to leave bikes or scooters. As I have 3 kids I have no way to get all the bikes or scooters home"



Reasons given why pupils are not walking or cycling



St Mark's Junior and Senior National Schools

Making the 'school run' safer and more enjoyable, and promoting active travel

General Feedback

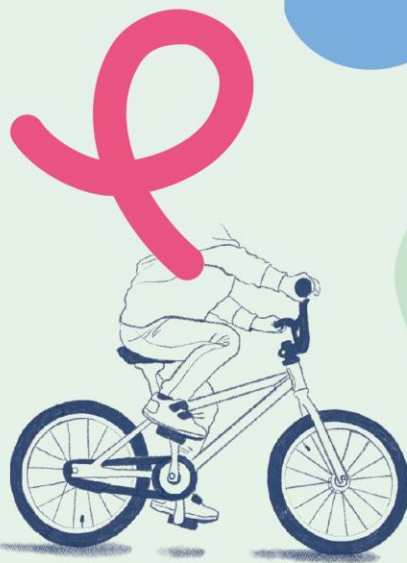
- **Active mobility:** Cycling and scooting levels to school are very low. Survey respondents noted that there is no bike parking on site due to security concerns. Teachers felt walkability interventions were vitally important – examples cited by respondents included better connectivity, crossings and other educational supports.
- **Traffic:** There is double parking and dangerous driving directly outside school. Parents and teachers felt traffic calming measures and better pedestrian crossings are required at minimum.
- There is strong support for School Zone treatments such as bollards to reduce parking on curb, improvements to pedestrian crossings, and traffic calming measures.

We asked what measures would help to promote active travel? These were the most popular:

- Secure bike/scooter storage
- Park & Stride – leaving the car about 10 minutes' walk from the school gate, and making the last leg of the journey to school on foot
- Walk/cycle/scoot on Wednesdays
- Cycle training for pupils
- Walking bus – pupils walking along a designated route with parents accompanying them
- Cycle bus – pupils cycling along a designated route with parents accompanying them

Our parents' survey showed widespread support for active travel and traffic calming improvements:

- 88% support better walking and cycle markings/paths – to make clearer and safer connections with the surrounding area
- 92% support better crossings – to make it easier and safer for pupils to cross the roads around the school
- 93% support bollards – outside/near school gates to stop illegal parking on footpaths or on double yellow lines and to make it safer to walk/cycle



"More needs to be done to prevent the cars parking immediately outside the gate - the lollipop lady is unable to see the on coming traffic because of the cars."

Timeline: What's happening and when

