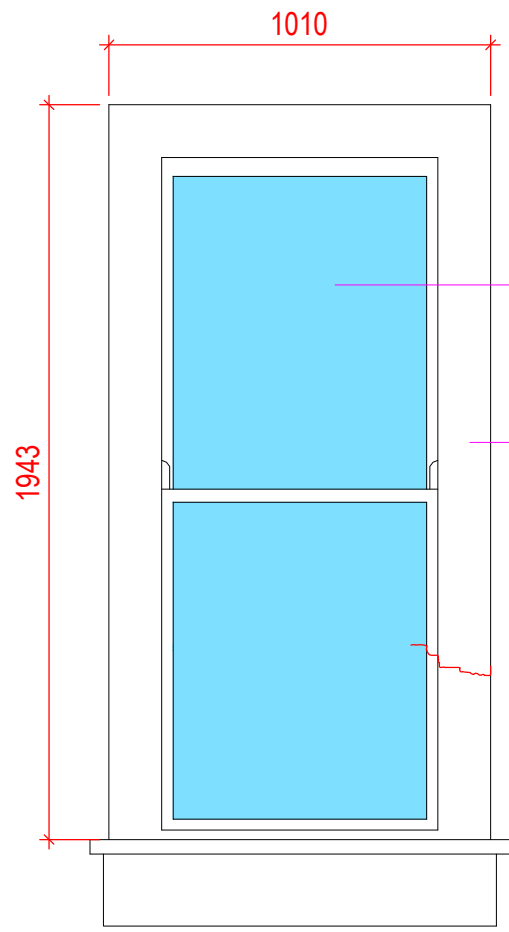
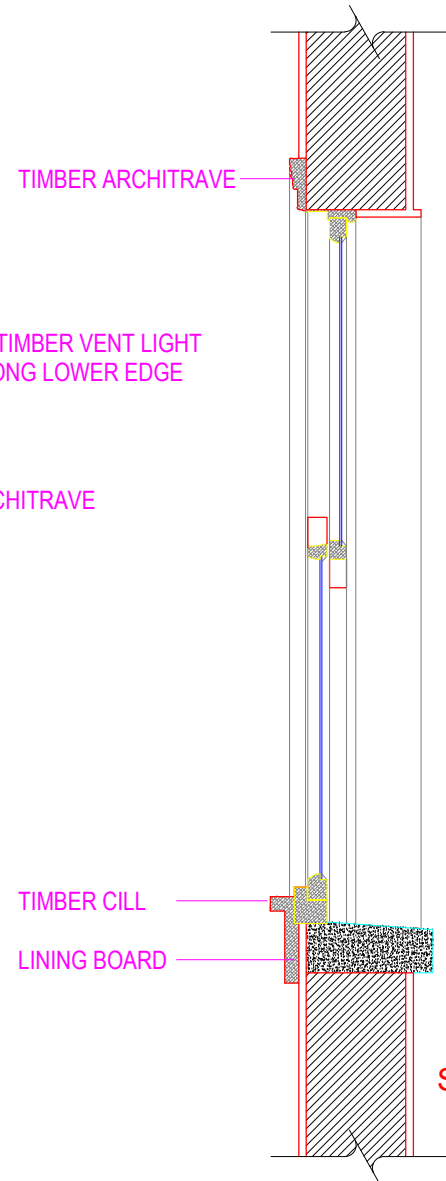


KEY PLAN



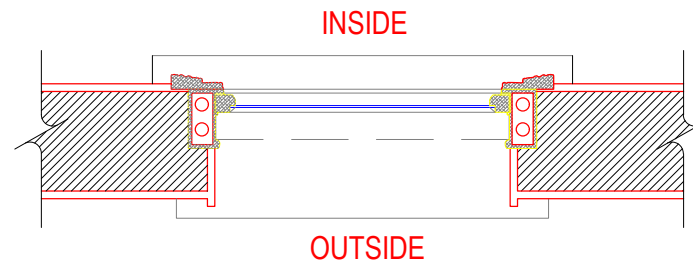
INTERNAL ELEVATION

WT 2

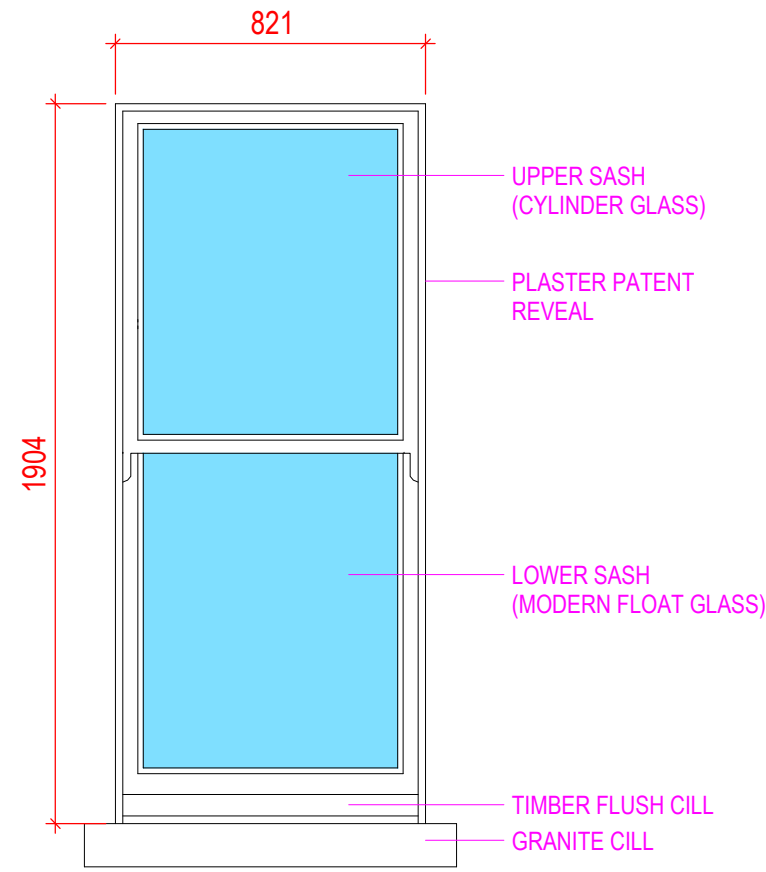


SECTION

WINDOWS TO THE ROBIN ROOM



PLAN



EXTERNAL ELEVATION

DESCRIPTION

UP-AND-DOWN, TIMBER SASH WINDOW, PROBABLY ORIGINAL, WITH LARGE SCROLLED HORNS
A MIXTURE OF MODERN FLOAT GLASS AND CYLINDER GLASS (PROBABLY ORIGINAL)
GLASS OF THE UPPER SASH HAS BEEN SMASHED AND BOARDED-UP
SASHES OVER-PAINTED AND STIFF, HANDLES AND SASH LOCKS MISSING
SOME DECAY IN THE TIMBER FLUSH CILL

SIZE

1810 MM HIGH, INTERNAL CILL TO UNDERSIDE OF HEAD LINING BOARD, 781mm WIDE, EXTERNAL REVEAL TO REVEAL

WORKS REQUIRED

DISMANTLE THE EXISTING WINDOW SASHES,
SAND THE EXISTING TIMBER LIGHTLY TO ACHIEVE A KEY FOR NEW PAINT. DO NOT DIP OR STRIP BACK TO RAW TIMBER.
CUT OUT AND REPLACE ALL DECAYED TIMBER, SPLICE IN NEW TO OLD. CAREFULLY REMOVE OLD, CRACKED, PERISHED PUTTY AND AVOID DAMAGE TO OLD GLASS.
CAREFULLY REMOVE THE BROKEN GLASS AND INSERT NEW FLOAT GLASS TO THE UPPER SASH.
APPLY NEW LINSEED OIL PUTTY.
ALLOW FOR NEW BRASS IRONMONGERY: SASH LOCKS, EYELETS AND HANDLES TO MATCH EXISTING.
CLEAN, LUBRICATE AND POLISH EXISTING IRONMONGERY.
REPAINT WITH A 3-COAT PAINT SYSTEM: PRIMER, UNDERCOAT AND GLOSS.