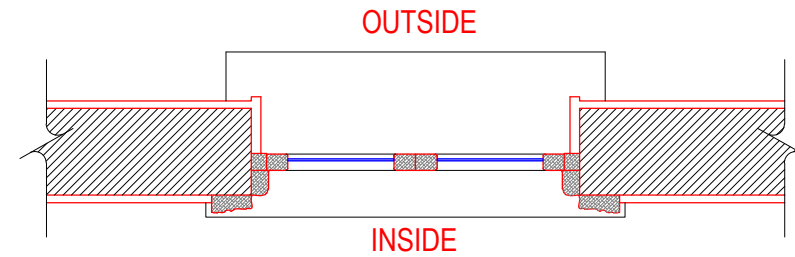
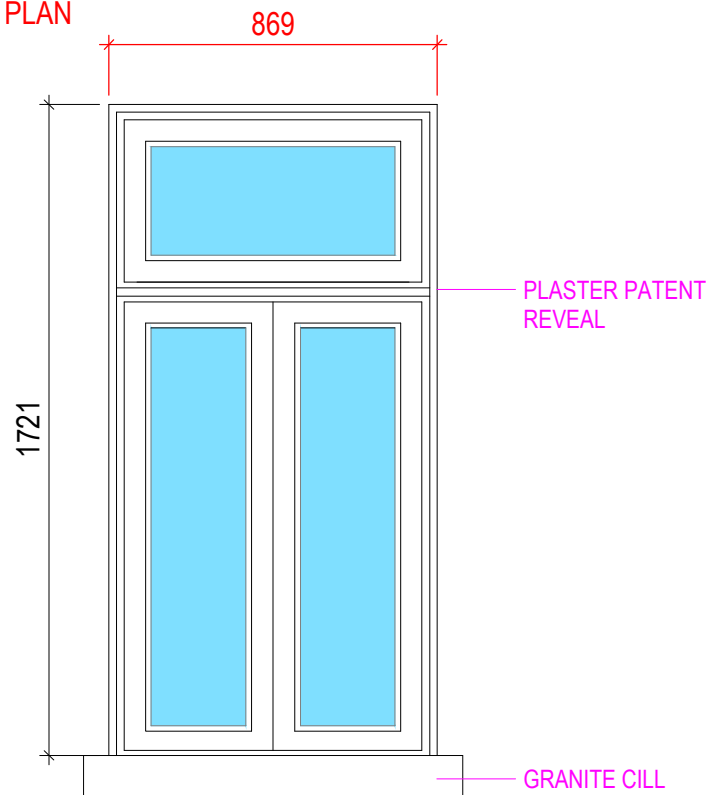


WT 1

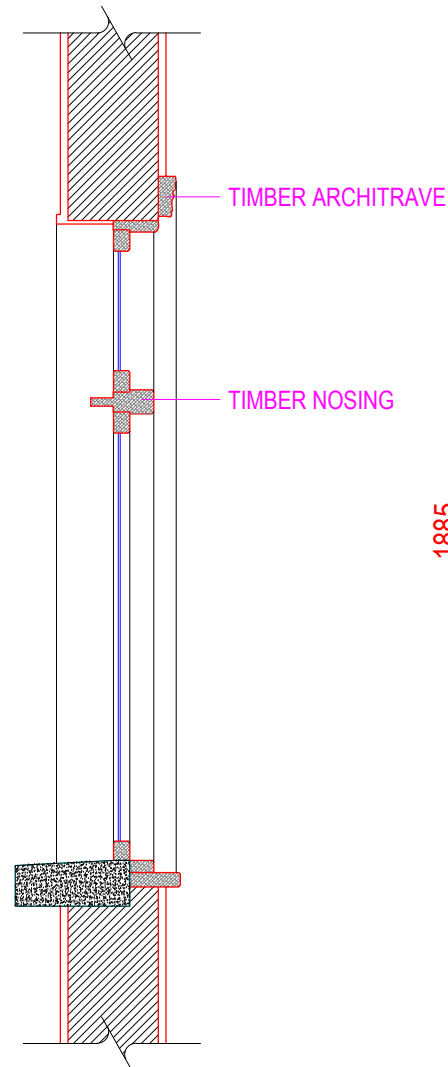
KEY PLAN



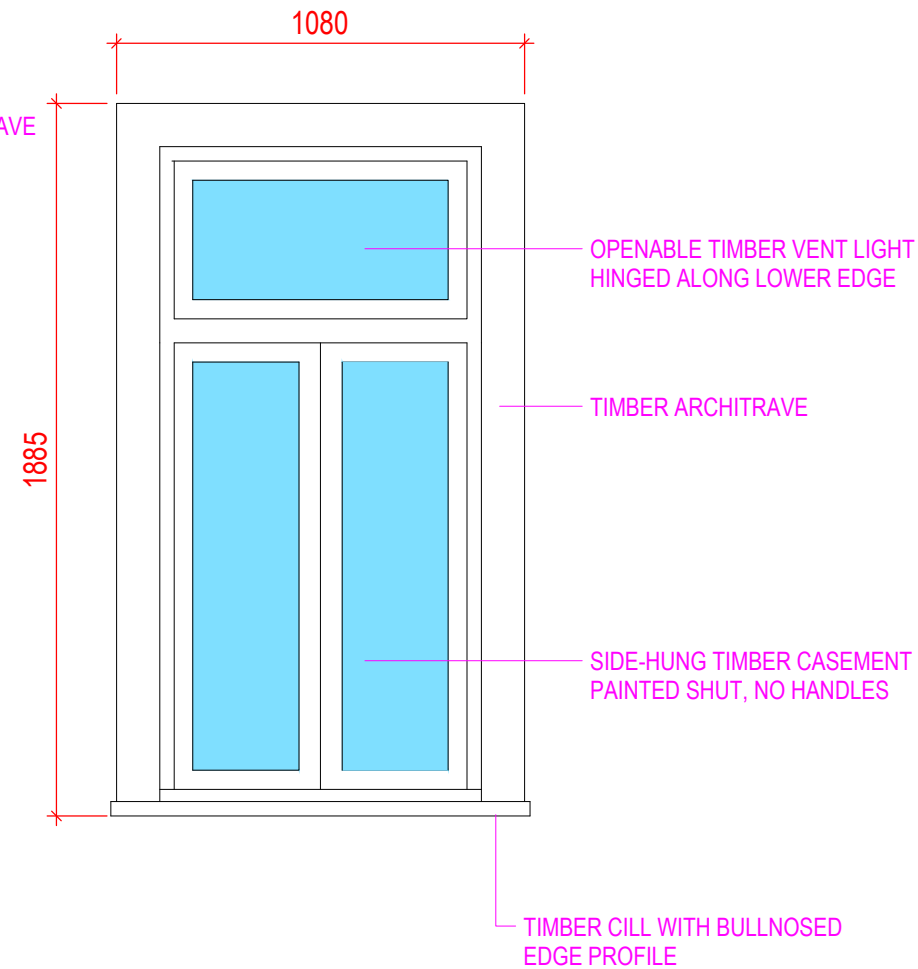
PLAN



EXTERNAL ELEVATION



SECTION



INTERNAL ELEVATION

DESCRIPTION

SIDE-HUNG CASEMENT WINDOWS WITH VENT LIGHT OVER
A MIXTURE OF MODERN FLOAT GLASS AND CYLINDER GLASS (PROBABLY ORIGINAL)
HINGES PAINTED OVER AND STIFF, HANDLES MISSING
THE WINDOW IS STUCK, PAINTED OVER AND NOT OPENABLE
SOME DECAY IN THE LOWER ENDS OF THE CASEMENT MUNTINS

SIZE

1694 MM HIGH, INTERNAL CILL TO SOFFIT, 818mm WIDE, EXTERNAL REVEAL TO REVEAL

WORKS REQUIRED

DISMANTLE THE EXISTING WINDOW CASEMENTS,
SAND THE EXISTING TIMBER LIGHTLY TO ACHIEVE A KEY FOR NEW PAINT.
DO NOT DIP OR STRIP BACK TO RAW TIMBER.
CUT OUT AND REPLACE ALL DECAYED TIMBER, SPLICE IN NEW TO OLD.
CAREFULLY REMOVE OLD, CRACKED, PERISHED PUTTY AND AVOID DAMAGE TO OLD GLASS.
APPLY NEW LINSEED OIL PUTTY.
ALLOW FOR NEW BRASS IRONMONGERY: CASEMENT HANDLE, HINGES TO MATCH EXISTING.
CLEAN, LUBRICATE AND POLISH EXISTING IRONMONGERY.
REPAINT WITH A 3-COAT PAINT SYSTEM: PRIMER, UNDERCOAT AND GLOSS.

WT 1

WINDOW AT FRONT OF COURTROOM, INTERN LHS OF DOUBLE DOORS