

02
P-160

TALLAGHT INNOVATION CENTRE
- key plan
1:350@A1

01
P-160

TALLAGHT INNOVATION CENTRE
- Section AA
1:100@A1

mcculloughmulvinarchitects

16 molesworth street, dublin 2, Ireland

t: +353 1 707 9555
f: +353 1 707 1912
www.mcculloughmulvin.com
info@mcculloughmulvin.com

"COPYRIGHT AND OWNERSHIP OF THIS DRAWING IS VESTED IN MCCULLOUGH MULVIN WHOSE PRIOR WRITTEN CONSENT IS REQUIRED FOR ITS USE. REPRODUCTION OR FOR PUBLICATION TO ANY THIRD PARTY. ALL RIGHTS RESERVED BY THE LAW OF COPYRIGHT AND BY INTERNATIONAL COPYRIGHT CONVENTIONS ARE RESERVED TO MCCULLOUGH MULVIN AND MAY BE PROTECTED BY COURT PROCEEDINGS FOR DAMAGES AND/OR INJUNCTIONS AND COSTS."

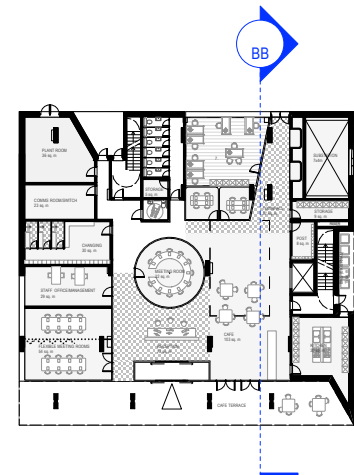
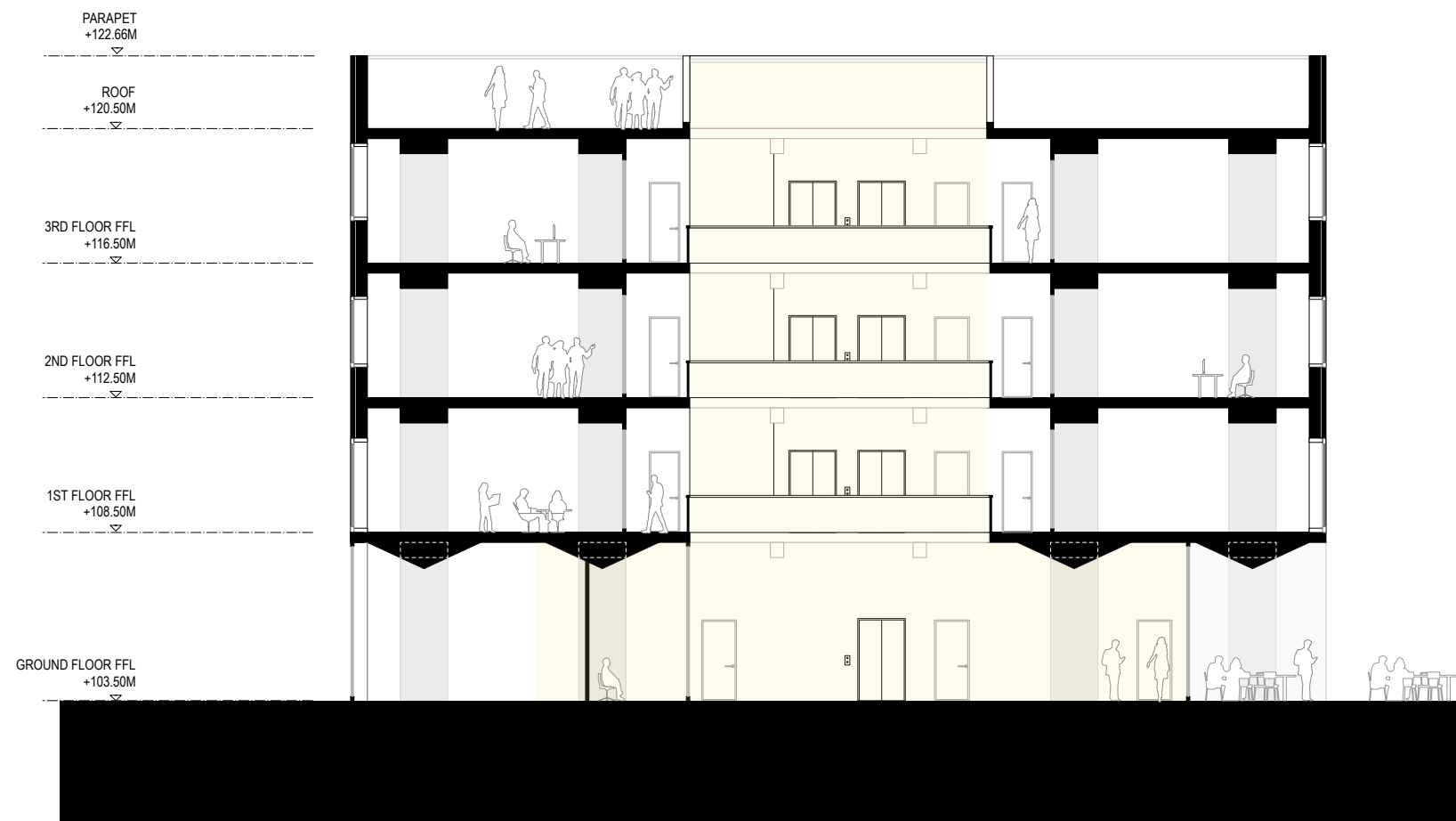
DO NOT SCALE THIS DRAWING
ALL WRITTEN DIMENSIONS ARE IN MILLIMETRES
ANY INCONSISTENCIES TO BE REPORTED TO THE ARCHITECT IMMEDIATELY
© MCCULLOUGH MULVIN 1999

Part 8 submission

REV	DATE	BY	DESCRIPTION
A	13.03.2020	SP	First issue
B	10.06.2020	SP	Design revision
C	24.06.2020	SP	Design revision
D	30.06.2020	SP	Design revision
E	08.07.2020	SP	Ground floor spaces arrangement revised. Upper floor general layout, secondary void
F	13.07.2020	SP	Ground floor spaces arrangement revised. Upper floor general layout.
G	13.07.2020	SP	Minor changes in the structural elements and walls' thickness. Secondary void removed
H	13.08.2020	NON	Issued for Stage 1
I	19.08.2020	NON	Design revision
J	15.09.2020	NON	Part 8 submission

DRAWN NON	PROJECT TALLAGHT INNOVATION CENTRE	SCALE 1:100@A1
CHECKED ROH	CLIENT SOUTH DUBLIN COUNTY COUNCIL	DATE 15.09.2020
DRAWING TITLE TALLAGHT INNOVATION CENTRE SECTION AA - PROPOSED		

DRAWING NUMBER TIC-P-160	REVISION J
--------------------------------	---------------



04
P-161

TALLAGHT INNOVATION CENTRE
- key plan
1:350@A1

03
P-161

TALLAGHT INNOVATION CENTRE
- Section BB
1:100@A1

mcculloughmulvinarchitects

16 molesworth street, dublin 2, ireland

t: +353 1 707 9555
f: +353 1 707 1912

www.mcculloughmulvin.com
info@mcculloughmulvin.com

"COPYRIGHT AND OWNERSHIP OF THIS DRAWING IS VESTED IN MCCULLOUGH MULVIN WHOSE PRIOR WRITTEN CONSENT IS REQUIRED FOR ITS USE. REPRODUCTION OR FOR PUBLICATION TO ANY THIRD PARTY. ALL RIGHTS RESERVED BY THE LAW OF COPYRIGHT AND BY INTERNATIONAL COPYRIGHT CONVENTIONS ARE RESERVED TO MCCULLOUGH MULVIN AND MAY BE PROTECTED BY COURT PROCEEDINGS FOR DAMAGES AND/OR INJUNCTIONS AND COSTS."

DO NOT SCALE THIS DRAWING
ALL WRITTEN DIMENSIONS ARE IN MILLIMETRES
ANY INCONSISTENCIES TO BE REPORTED TO THE ARCHITECT IMMEDIATELY

© MCCULLOUGH MULVIN 1999

Part 8 submission

REV	DATE	BY	DESCRIPTION
/		SP	First Issue
B	13.03.2020	SP	Design revision
C	10.06.2020	SP	Design revision
D	24.06.2020	SP	Design revision
E	30.06.2020	SP	Ground floor spaces arrangement revised. Upper floor general layout, secondary void
F	08.07.2020	SP	Ground floor spaces arrangement revised. Upper floor general layout.
G	13.07.2020	SP	Minor changes in the structural elements and walls' thickness. Secondary void removed
H	13.08.2020	NON	Issued for Stage 1
I	19.08.2020	NON	Design revision
J	15.09.2020	NON	Part 8 submission

DRAWN NON	PROJECT TALLAGHT INNOVATION CENTRE	SCALE 1:100@ A1
CHECKED ROH	CLIENT SOUTH DUBLIN COUNTY COUNCIL	DATE 15.09.2020
DRAWING TITLE TALLAGHT INNOVATION CENTRE SECTION BB - PROPOSED		

DRAWING NUMBER	REVISION
TIC-P-161	J