

01 TALLAGHT INNOVATION CENTRE  
- GROUND FLOOR PLAN  
SK-100 1:100@A1

## Part 8 submission

"COPYRIGHT AND OWNERSHIP OF THIS DRAWING IS VESTED IN MCCULLOUGH MULVIN WHOSE PRIOR WRITTEN CONSENT IS REQUIRED FOR ITS USE. REPRODUCTION OR FOR PUBLICATION TO ANY THIRD PARTY. ALL RIGHTS RESERVED BY THE LAW OF COPYRIGHT AND BY INTERNATIONAL COPYRIGHT CONVENTIONS ARE RESERVED TO MCCULLOUGH MULVIN AND MAY BE PROTECTED BY COURT PROCEEDINGS FOR DAMAGES AND/OR INJUNCTIONS AND COSTS."

DO NOT SCALE THIS DRAWING  
ALL WRITTEN DIMENSIONS ARE IN MILLIMETRES  
ANY INCONSISTENCIES TO BE REPORTED TO THE ARCHITECT IMMEDIATELY

© MCCULLOUGH MULVIN 1999

REV	DATE	BY	DESCRIPTION
I		SP	First Issue
B	13.03.2020	SP	Design revision
C	10.06.2020	SP	Design revision
D	24.06.2020	SP	Design revision
E	30.06.2020	SP	Ground floor spaces arrangement revised. Upper floor general layout, secondary void
F	08.07.2020	SP	Ground floor spaces arrangement revised. Upper floor general layout.
G	13.07.2020	SP	Minor changes in the structural elements and walls' thickness. Secondary void removed
H	10.08.2020	NON	M&E revision, second lift removed.
I	13.08.2020	NON	Issued for Stage 1
J	17.08.2020	NON	Revision of substation
K	27.08.2020	NON	Landscape design revision
L	15.09.2020	NON	Part 8 submission

DRAWN NON	PROJECT TALLAGHT INNOVATION CENTRE	SCALE 1:100@A1	DRAWING NUMBER
CHECKED ROH	CLIENT SOUTH DUBLIN COUNTY COUNCIL	DATE 15.09.2020	TIC-P-100
DRAWING TITLE TALLAGHT INNOVATION CENTRE GROUND FLOOR PLAN			

L



01  
SK-101 TALLAGHT INNOVATION CENTRE  
- FIRST FLOOR PLAN  
1:100@A1



02  
SK-101 TALLAGHT INNOVATION CENTRE  
- SECOND FLOOR PLAN  
1:100@A1

mcculloughmulvinarchitects

16 molesworth street, dublin 2, ireland  
t: +353 1 707 9555 www.mcculloughmulvin.com  
f: +353 1 707 1912 info@mcculloughmulvin.com

"COPYRIGHT AND OWNERSHIP OF THIS DRAWING IS VESTED IN MCCULLOUGH MULVIN WHOSE PRIOR WRITTEN CONSENT IS REQUIRED FOR ITS USE. REPRODUCTION OR FOR PUBLICATION TO ANY THIRD PARTY. ALL RIGHTS RESERVED BY THE LAW OF COPYRIGHT AND BY INTERNATIONAL COPYRIGHT CONVENTIONS ARE RESERVED TO MCCULLOUGH MULVIN AND MAY BE PROTECTED BY COURT PROCEEDINGS FOR DAMAGES AND/OR INJUNCTIONS AND COSTS."

DO NOT SCALE THIS DRAWING  
ALL WRITTEN DIMENSIONS ARE IN MILLIMETRES  
ANY INCONSISTENCIES TO BE REPORTED TO THE ARCHITECT IMMEDIATELY  
© MCCULLOUGH MULVIN 1999

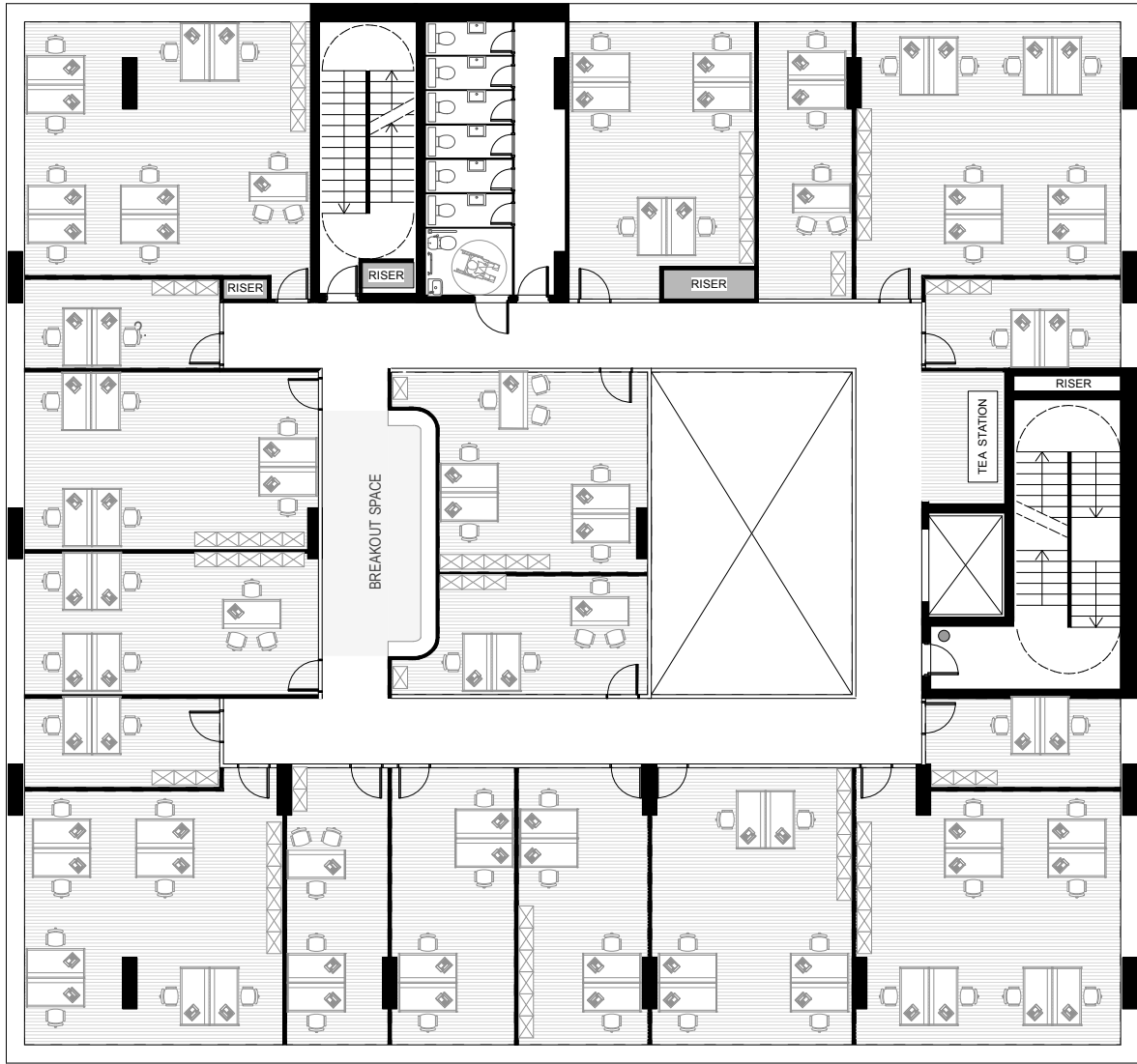
Part 8 submission

REV	DATE	BY	DESCRIPTION
I		SP	First Issue
B	13.03.2020	SP	Design revision
C	10.06.2020	SP	Design revision
D	24.06.2020	SP	Design revision
E	30.06.2020	SP	Ground floor spaces arrangement revised. Upper floor general layout, secondary void
F	08.07.2020	SP	Ground floor spaces arrangement revised. Upper floor general layout.
G	13.07.2020	SP	Minor changes in the structural elements and walls' thickness. Secondary void removed
H	10.08.2020	NON	M&E revision, second lift removed
I	13.08.2020	NON	Issued for Stage 1
J	17.08.2020	NON	Revision of substation
K	27.08.2020	NON	Landscape design revision
L	15.09.2020	NON	Part 8 submission

DRAWN NON	PROJECT TALLAGHT INNOVATION CENTRE	SCALE 1:100@ A1	DRAWING NUMBER
CHECKED ROH	CLIENT SOUTH DUBLIN COUNTY COUNCIL	DATE 15.09.2020	
DRAWING TITLE	TALLAGHT INNOVATION CENTRE 1 <sup>ST</sup> - 2 <sup>ND</sup> FLOOR PLAN		

TIC-P-101

L



01 TALLAGHT INNOVATION CENTRE  
- THIRD FLOOR PLAN  
SK-102 1:100@A1

Plant / Switch / Comms excluded from calculations

Description	%	sq. m
Gross Internal Floor Area	100	2980
Nett Area	74.5	2221
Nett lettable Area	60.7	1798

Description	%	sq. m		
Nett Lettable (offices, Labs & Workshops)	60.7	1798		Breakdown Lettable
Reception / Town hall (post included)	3.7	111		TypeQuantity
Café	3.4	103		2 Person Suite11
Meeting Rooms	4.6	136		3 Person Suite8
Staff Office / Management suite incl Directors office	1.0	29		4 Person Suite6
Café Kitchen	1.0	30		5 Person Suite6
Nett Internal Area	74.5	2221		6 Person Suite9
				7 Person Suite1
WC	4.0	120		8 Person Suite9
Circulation	14.2	422		9 Person Suite3
Showers and lockers incl drying	1.2	28		13 Person Suite0
Bin store	0.0	15 (external)		
Bike store	0.0	30 (external)		tot. 53
Storage Rooms	0.5	14		
Common Areas	20.2	584		Meeting room1
				Breakout space3
				Tea station3
Internal partitions	5.9	175		Kitchenette1
Gross Internal Floor area	100	2980		

