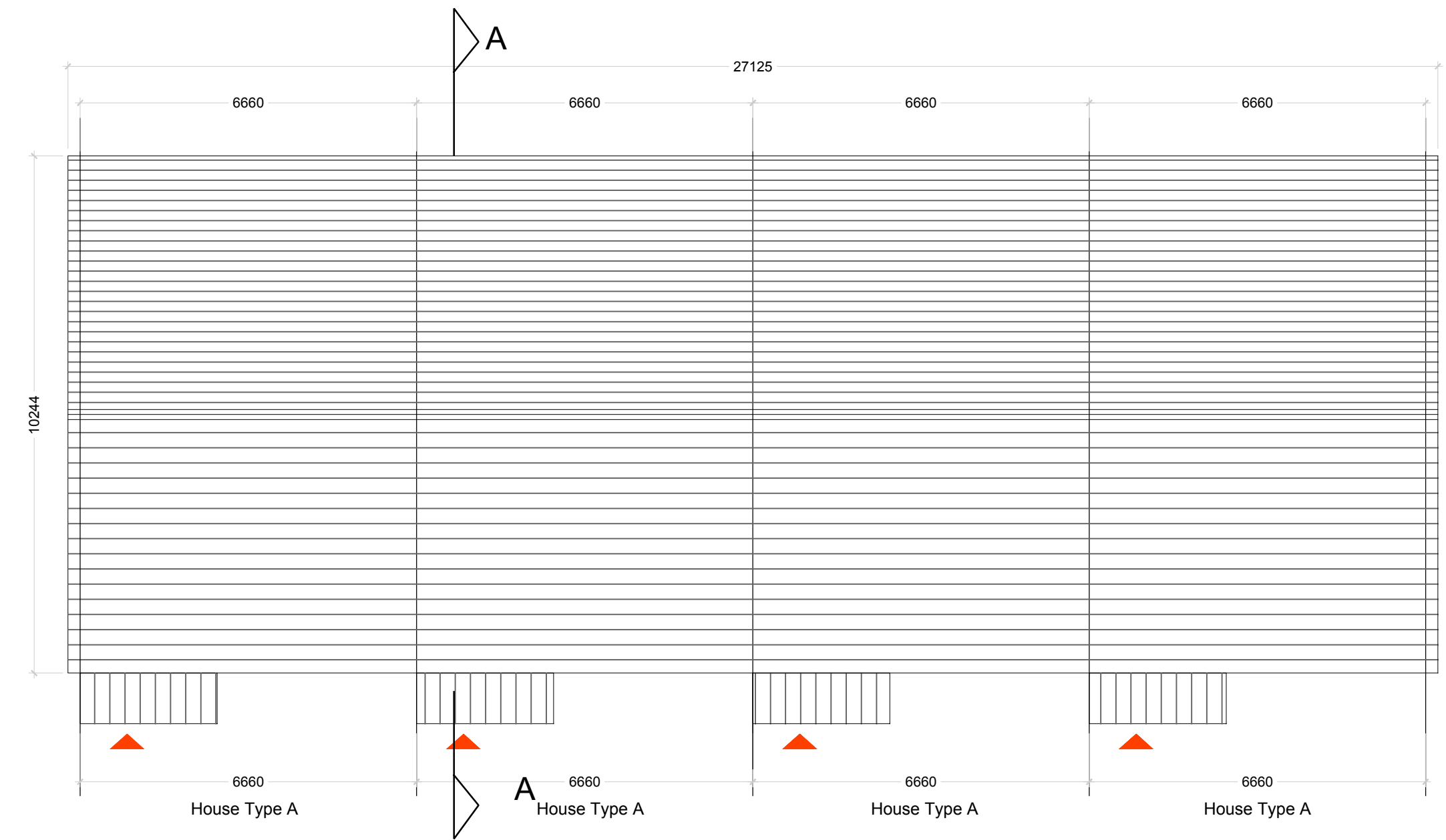


FERNWOOD PARK - PART 8 PLANNING APPLICATION

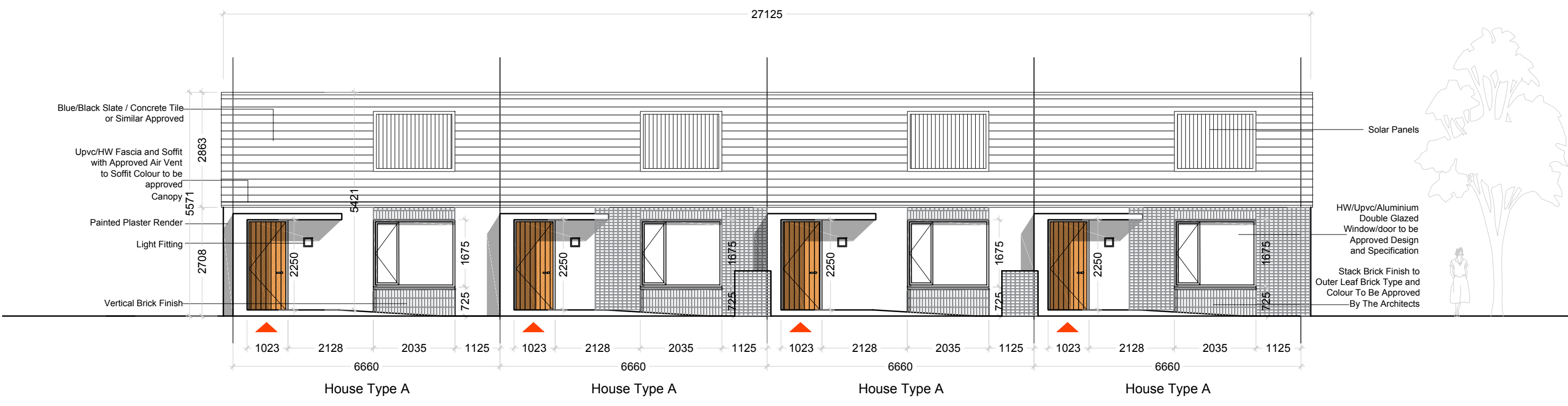
Rev.	By	Date	Description
A	CS	8/6/2018	PART 8 SUBMISSION



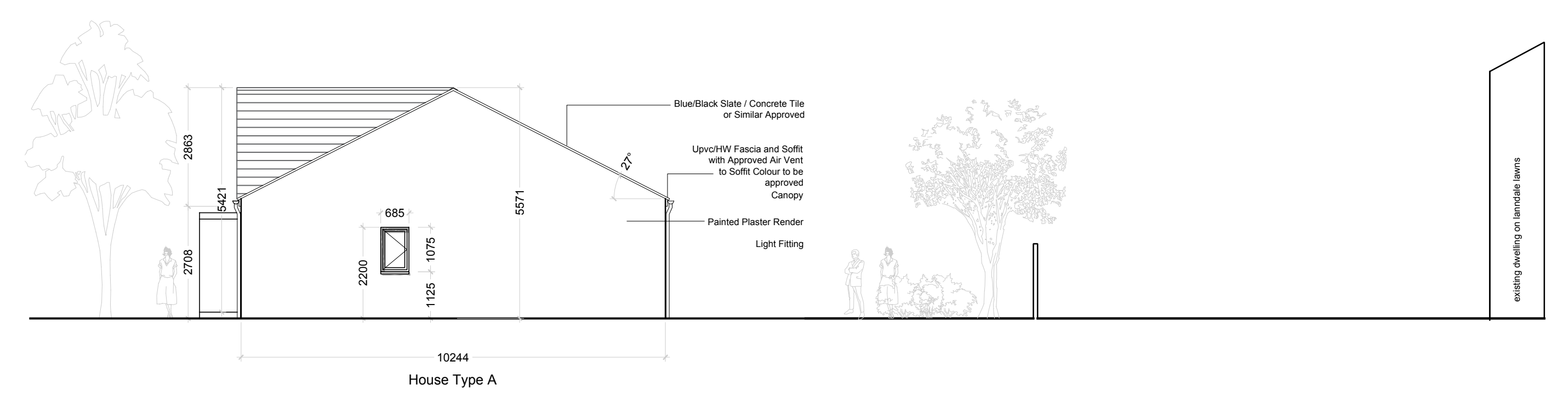
01 GROUND FLOOR PLAN 1:100
04 BLOCK 4



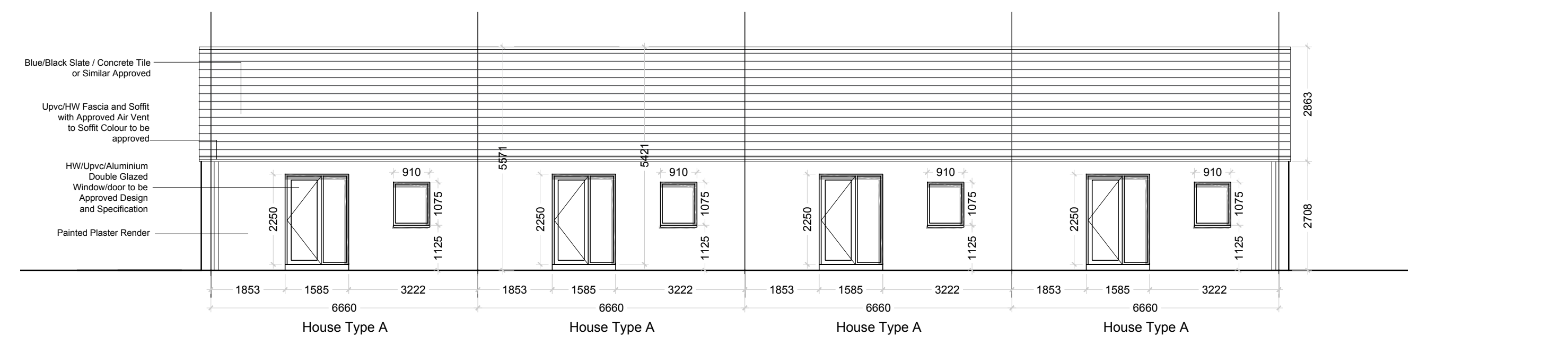
02 ROOF PLAN 1:100
04 BLOCK 4



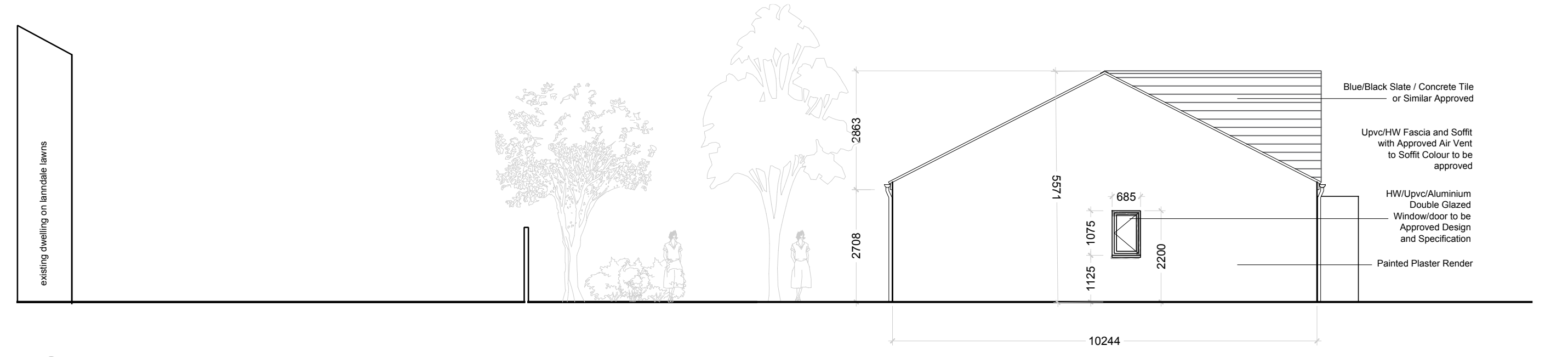
03 SOUTH ELEVATION 1:100
04 BLOCK 4



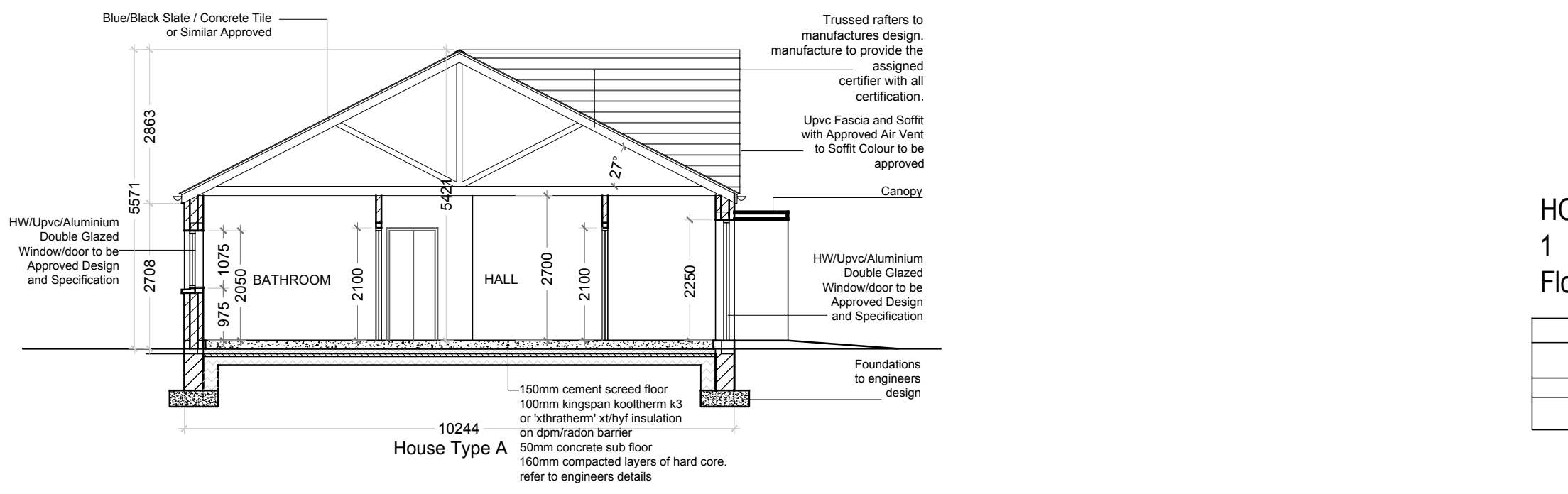
03 EAST ELEVATION 1:100
02 BLOCK 4



06 REAR ELEVATION 1:100
02 BLOCK 4



05 WEST ELEVATION 1:100
02 BLOCK 4



07 SECTION A-A 1:100
01 BLOCK 4

HOUSE TYPE A (TERRACED)
1 BEDROOM / 2 PERSON
Floor Area 61.5 msq / 662 sqft

Quality Housing for Sustainable Communities space provision						
TYPE A	Dwelling Type	Gross Floor Area	Minimum Main Living room	Aggregate living area	Aggregate bedroom area	Storage
Target	1 Bed 2P house	44 m ²	11 m ²	23 m ²	11 m ²	2 m ²
Proposed	1 Bed 2P house	61.5 m ²	11.2 m ²	23 m ²	13.3 m ²	2.4 m ²



CPR Note:
All works to be carried out using proper materials which are fit for the use they are intended and for the condition in which they are to be used.
All materials used in connection with the works to comply with the Construction Products Regulation (EU) No. 305/2011 and the harmonised technical specifications/standards that fall within the remit of the CPR No. 305/2011



DRAWING TITLE			
BLOCK 4 PART 8 SUBMISSION			
SCALE	DRAWING NUMBER	JOB	CLIENT
A 1:100	811-PB-105	FERNWOOD PK MAPLEWOOD RD	CLUID HOUSING ASSOC
REVISION	DATE	BY	DATE
A 1	8/11/18	AH	9/5/2018