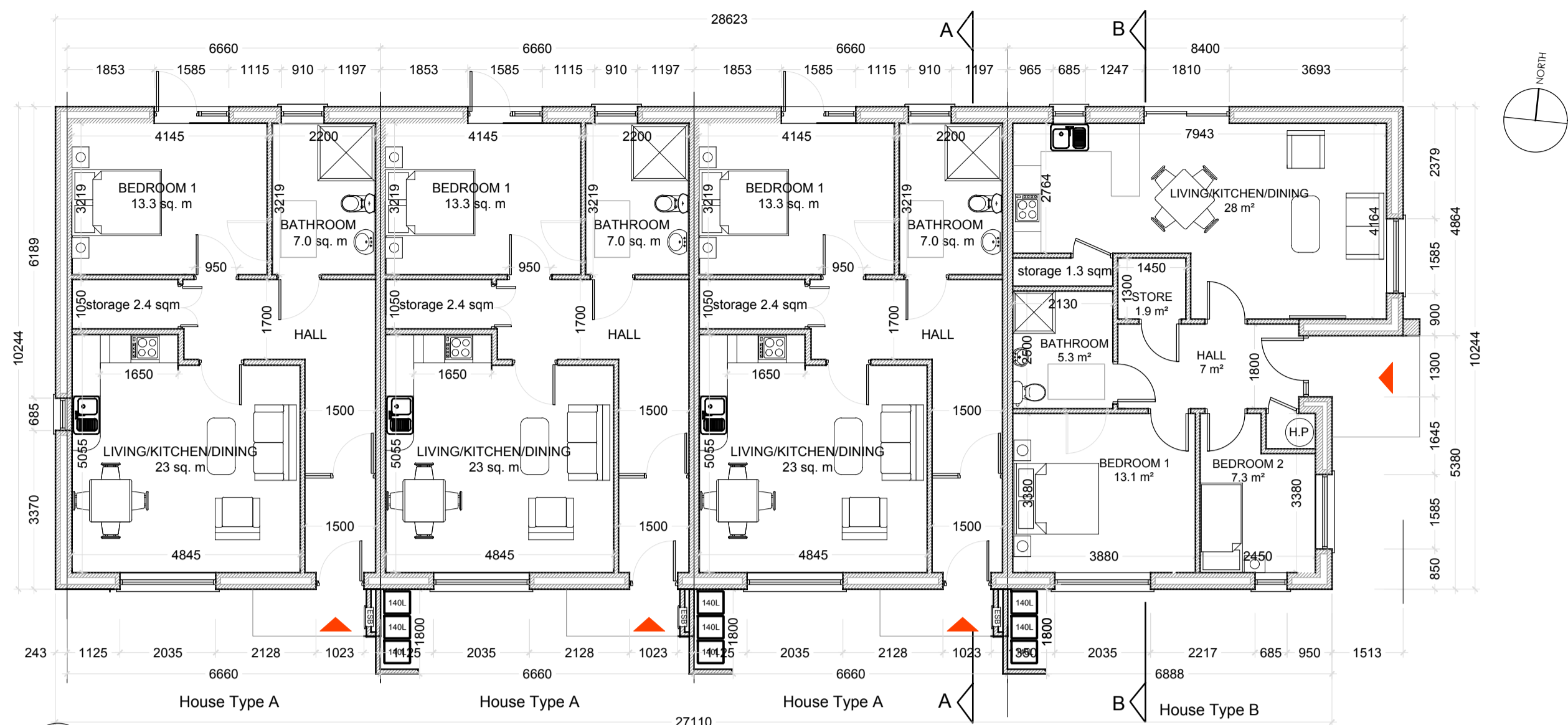
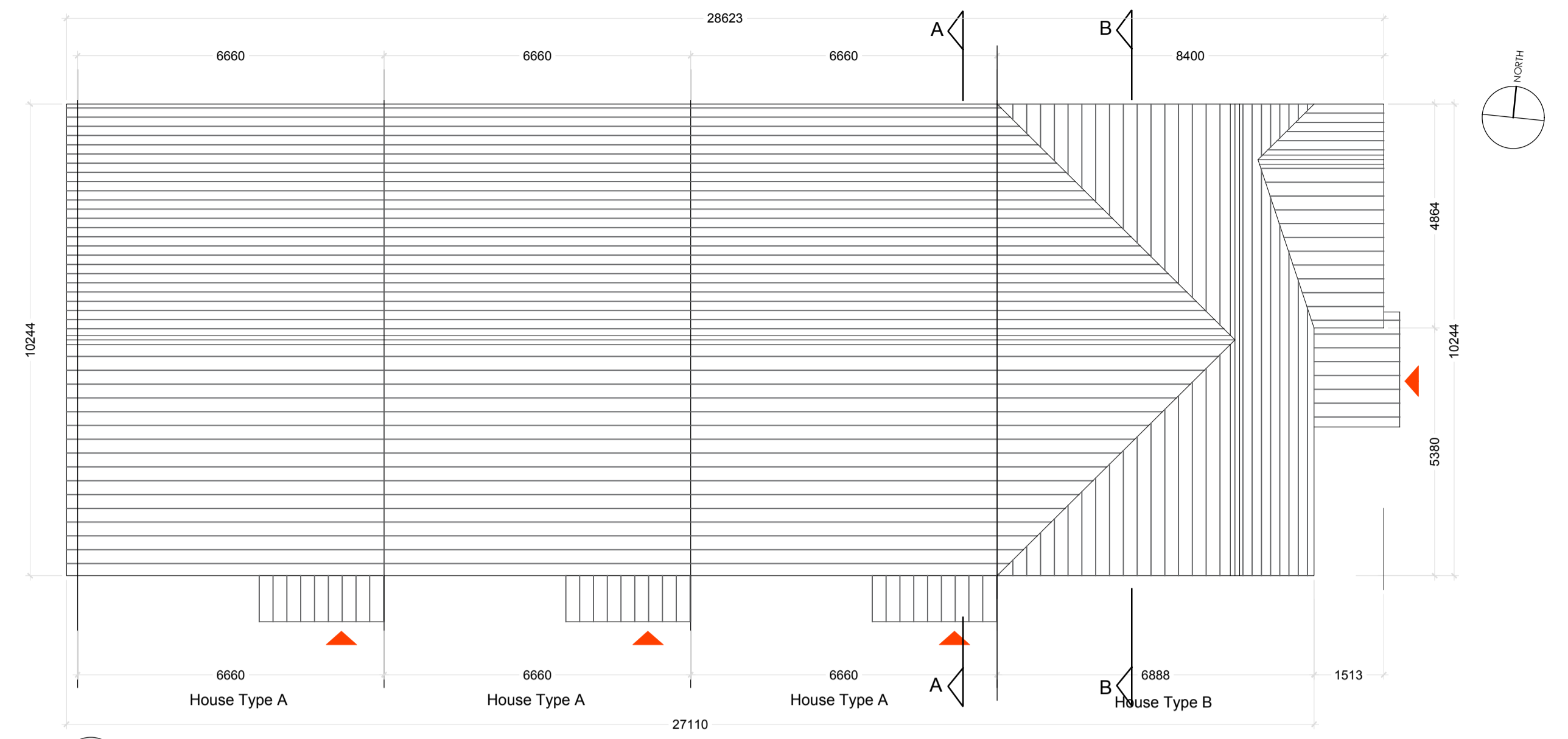


# FERNWOOD PARK - PART 8 PLANNING APPLICATION

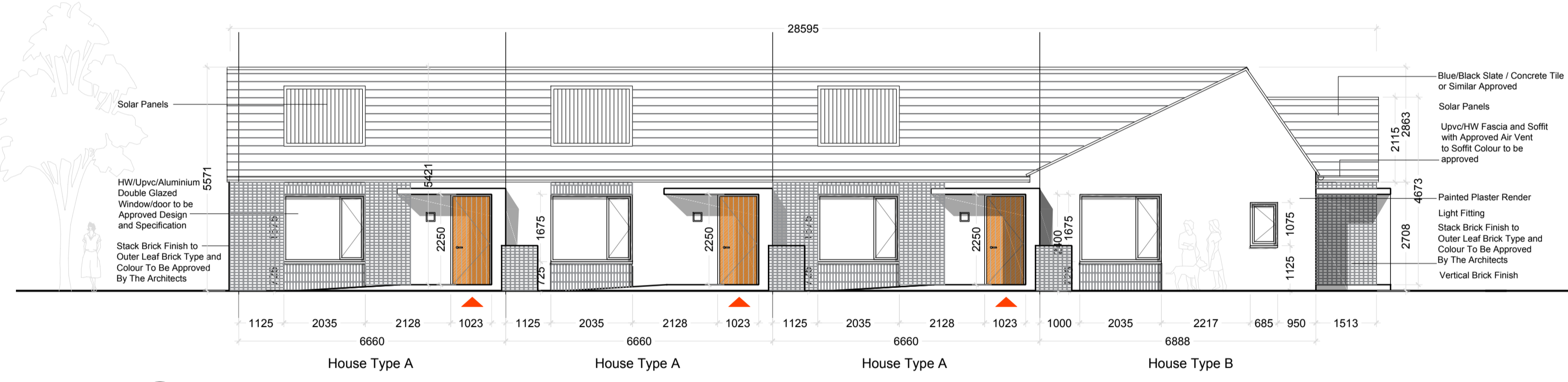
Rev.	By	Date	Description
A	CS	8/6/2018	PART 8 SUBMISSION



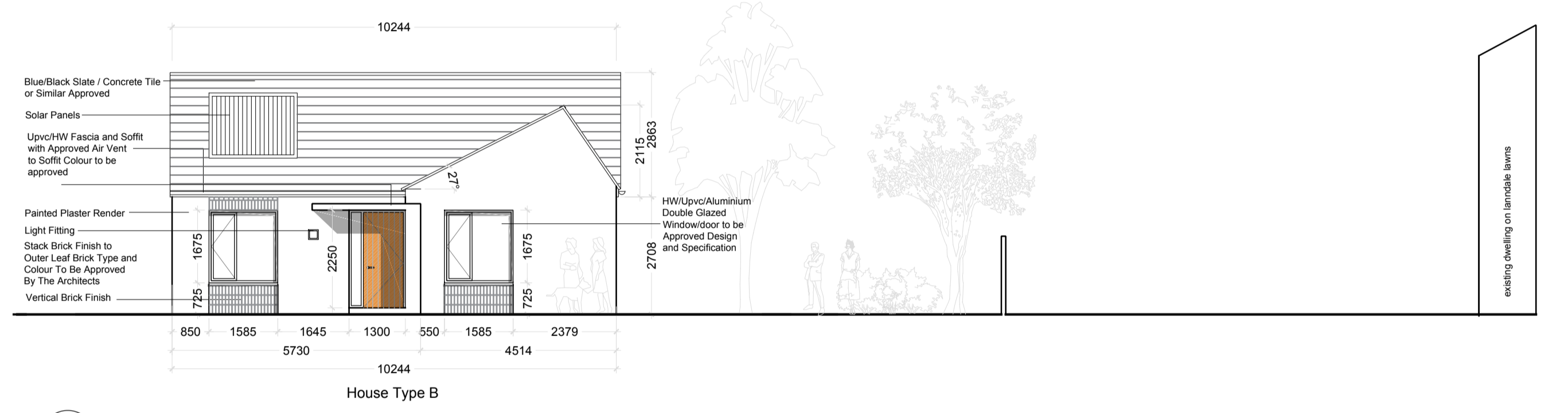
01 GROUND FLOOR PLAN 1:100  
02 BLOCK 2



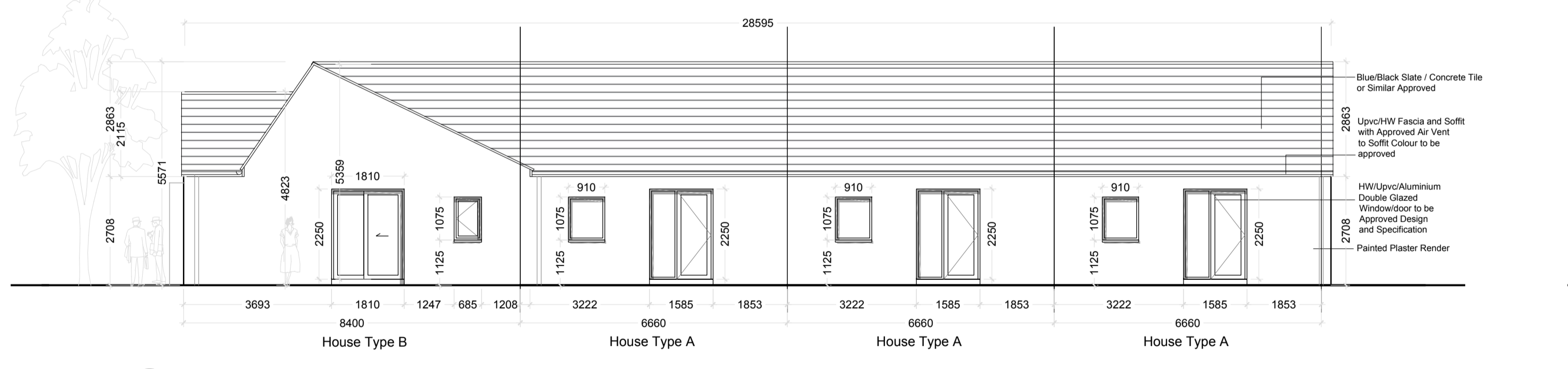
02 ROOF PLAN 1:100  
02 BLOCK 2



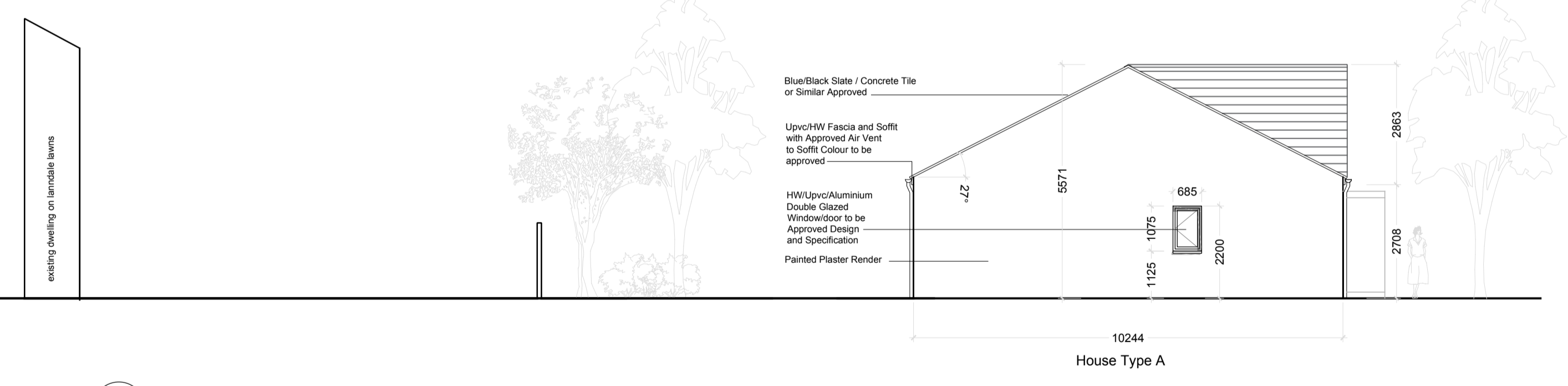
03 SOUTH ELEVATION 1:100  
02 BLOCK 2



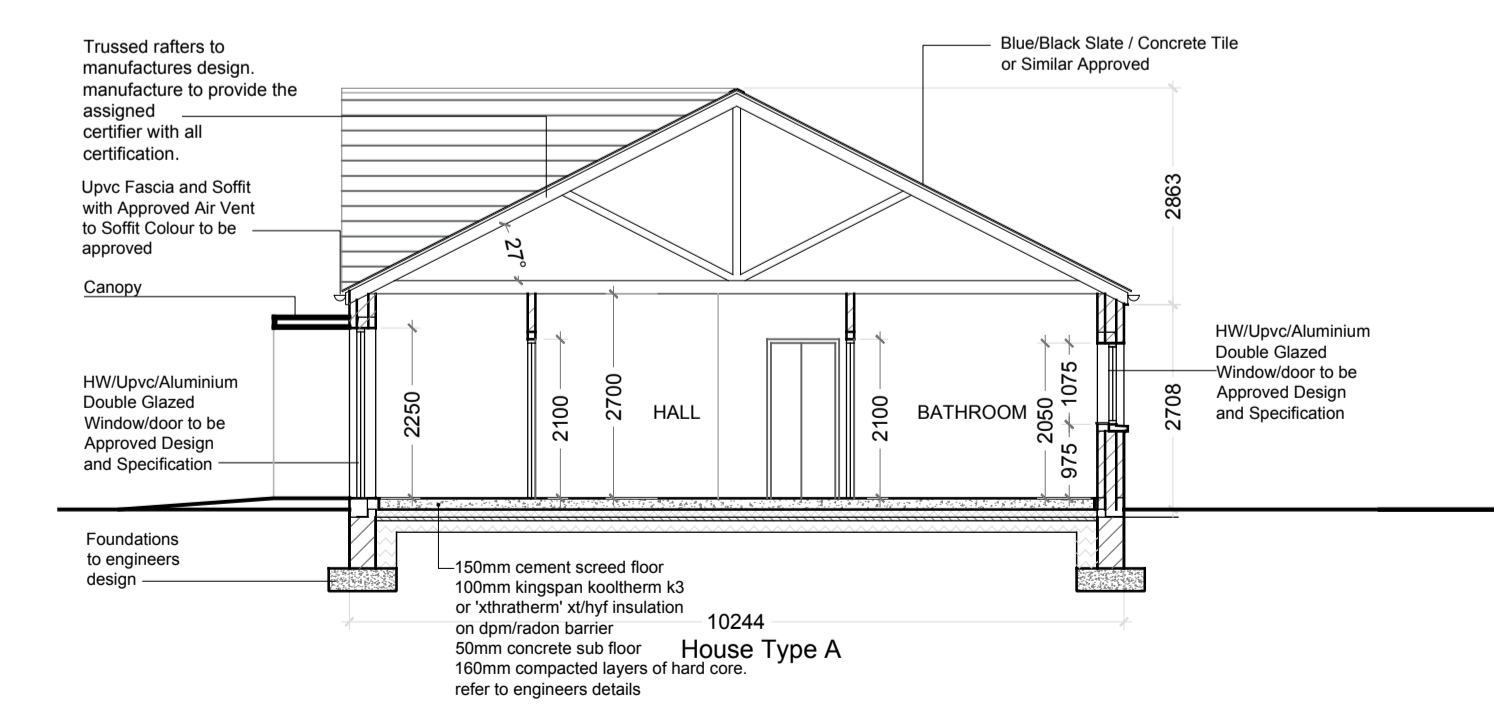
04 EAST ELEVATION 1:100  
02 BLOCK 2



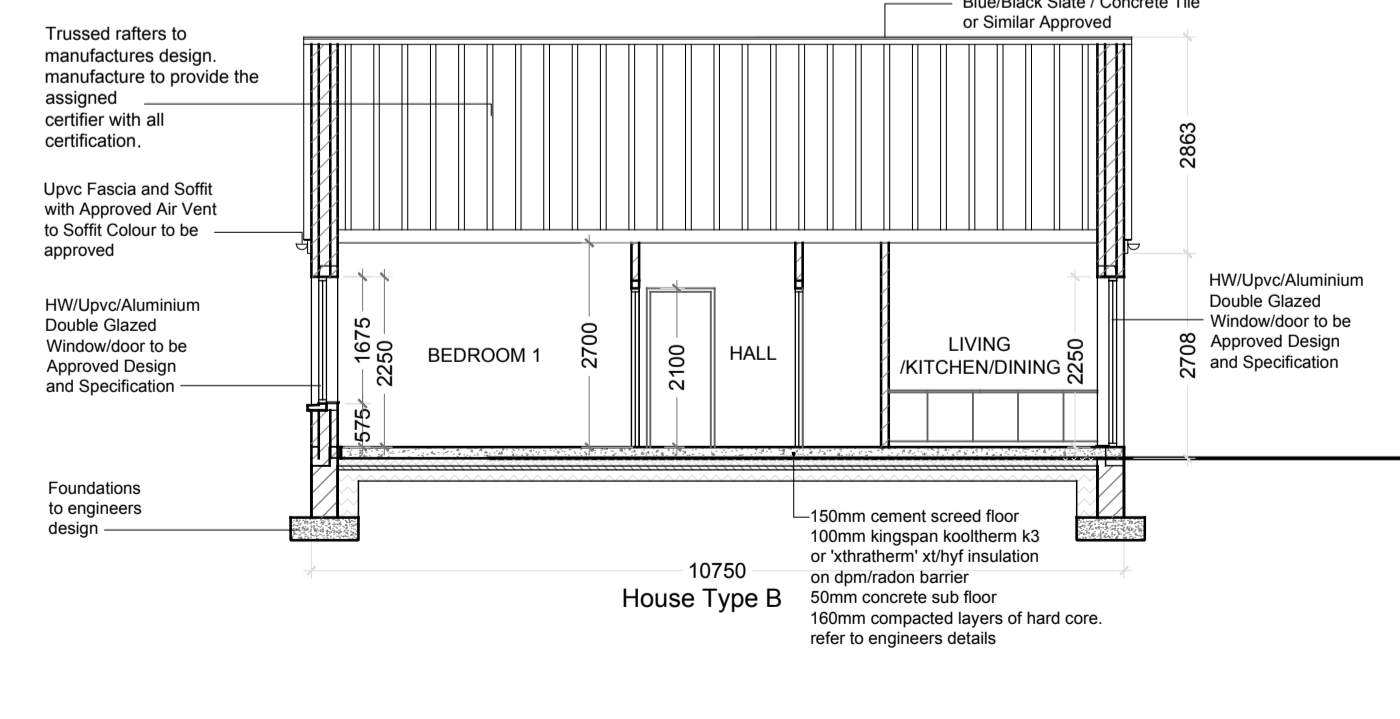
05 NORTH ELEVATION 1:100  
02 BLOCK 2



06 WEST ELEVATION 1:100  
02 BLOCK 2



07 SECTION A-A 1:100  
02 BLOCK 2



08 SECTION B-B 1:100  
02 BLOCK 2

**HOUSE TYPE A (TERRACED)**  
1 BEDROOM / 2 PERSON  
Floor Area 61.5 msq / 662 sqft

Quality Housing for Sustainable Communities space provision						
TYPE A	Dwelling Type	Gross Floor Area	Minimum Main Living room	Aggregate living area	Aggregate bedroom area	Storage
Target	1 Bed 2P house	44 m <sup>2</sup>	11 m <sup>2</sup>	23 m <sup>2</sup>	11 m <sup>2</sup>	2 m <sup>2</sup>
Proposed	1 Bed 2P house	61.5 m <sup>2</sup>	11.2 m <sup>2</sup>	23 m <sup>2</sup>	13.3m <sup>2</sup>	2.4 m <sup>2</sup>

**HOUSE TYPE B (TERRACED)**  
2 BEDROOM / 3 PERSON  
Floor Area 67 msq / 721.1 sqft

Quality Housing for Sustainable Communities space provision						
TYPE A	Dwelling Type	Gross Floor Area	Minimum Main Living room	Aggregate living area	Aggregate bedroom area	Storage
Target	2 Bed 3P house	60 m <sup>2</sup>	13 m <sup>2</sup>	28 m <sup>2</sup>	20m <sup>2</sup>	3 m <sup>2</sup>
Proposed	2 Bed 3P house	67 m <sup>2</sup>	13.2 m <sup>2</sup>	28m <sup>2</sup>	20.4m <sup>2</sup>	4 m <sup>2</sup>



**CPR Note:**  
All works to be carried out using proper materials which are fit for the use they are intended and for the condition in which they are to be used.  
All materials used in connection with the works to comply with the Construction Products Regulation (EU) No. 305/2011 and the harmonised technical specifications/standards that fall within the remit of the CPR No. 305/2011



DRAWING TITLE						
BLOCK 2 PART 8 SUBMISSION						
SCALE	1:100	DRAWING NUMBER	1811-P8-101	JOB	FERNWOOD PK MAPLEWOOD RD	
PROJECT	A	CLIENT REFERENCE	1811-P8-101	CLIENT	CLUID HOUSING ASSOC	
REVISED BY	SG	DRAWN BY	AH	DATE	9/5/2018	