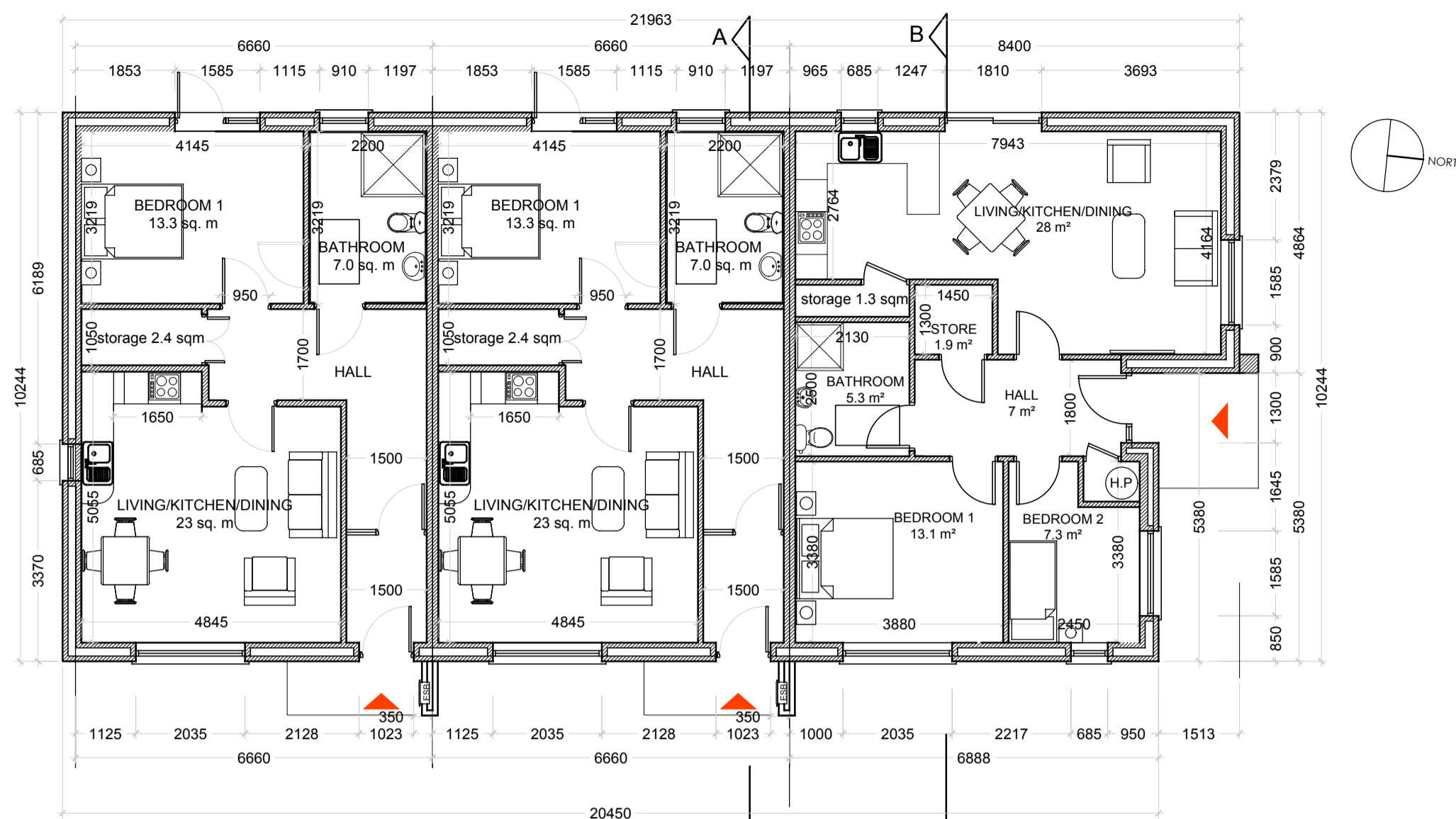
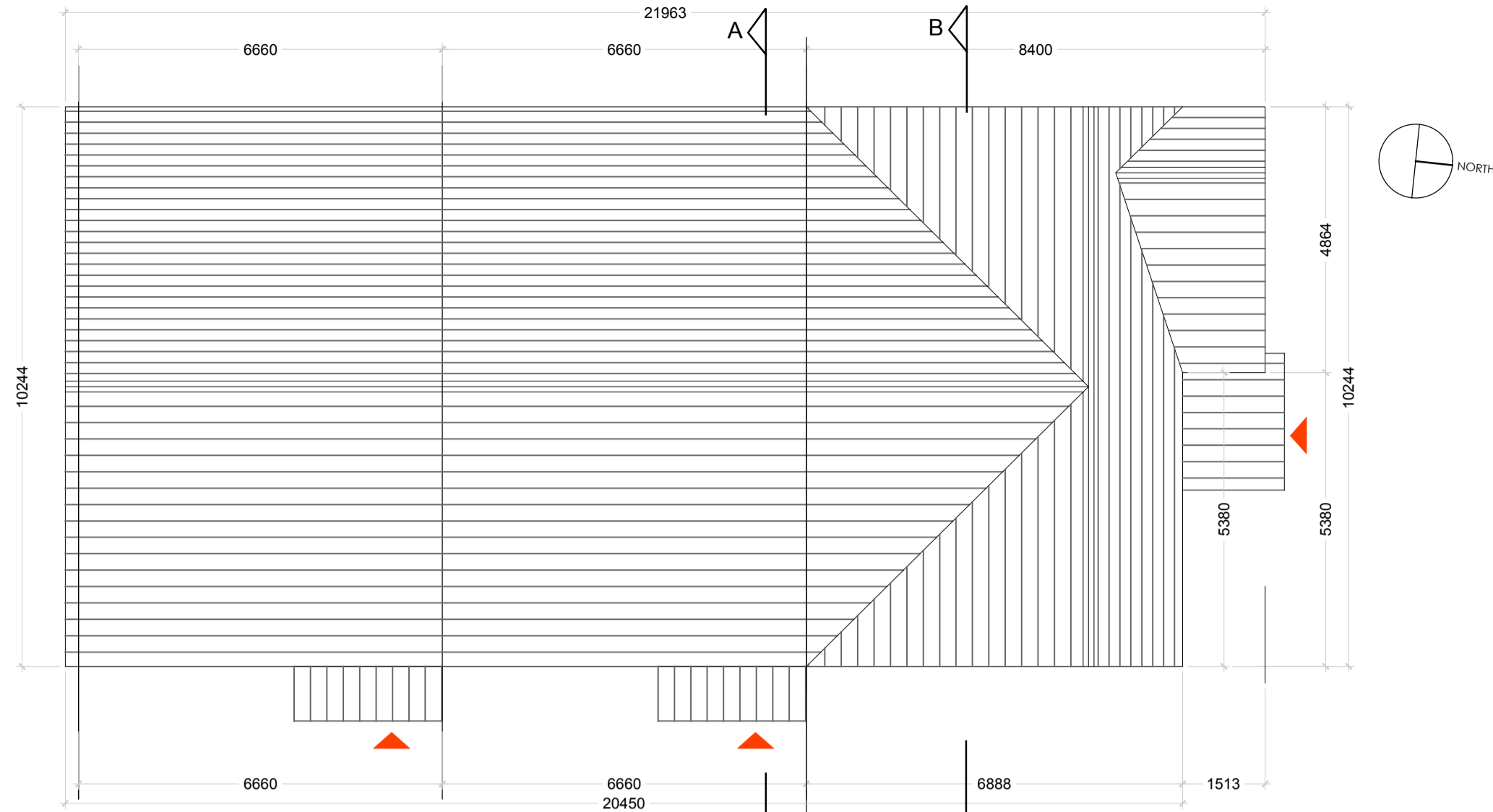


FERNWOOD PARK - PART 8 PLANNING APPLICATION

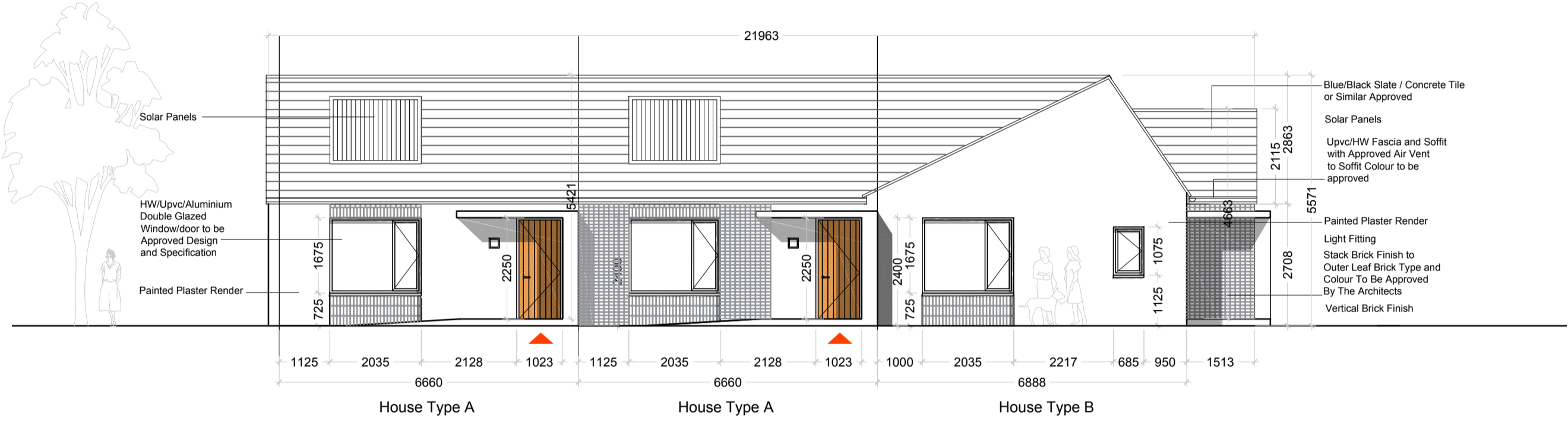
Rev.	By	Date	Description
A	CS	8/6/2018	PART 8 SUBMISSION



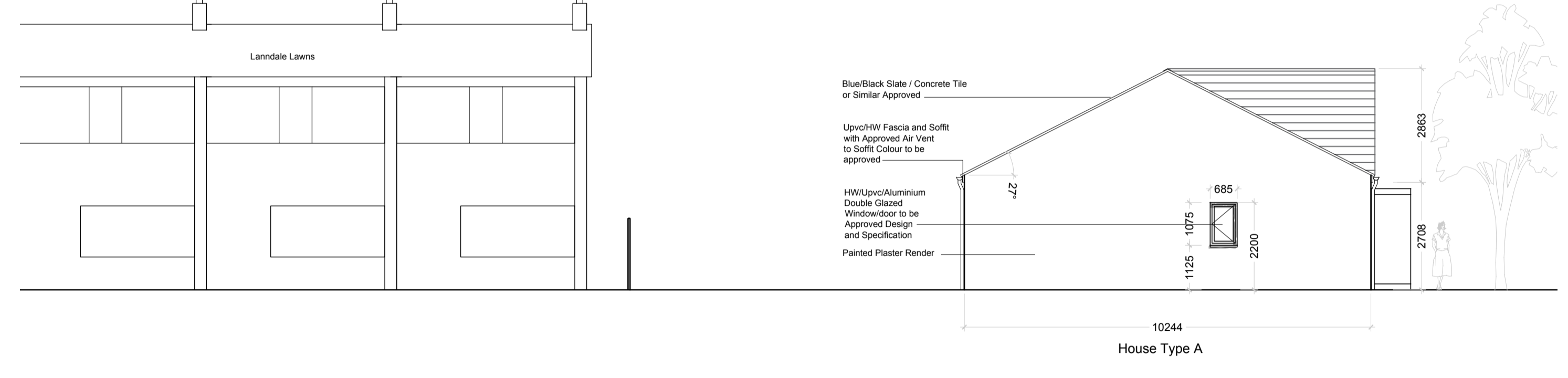
01
03 GROUND FLOOR PLAN 1:100
BLOCK 5



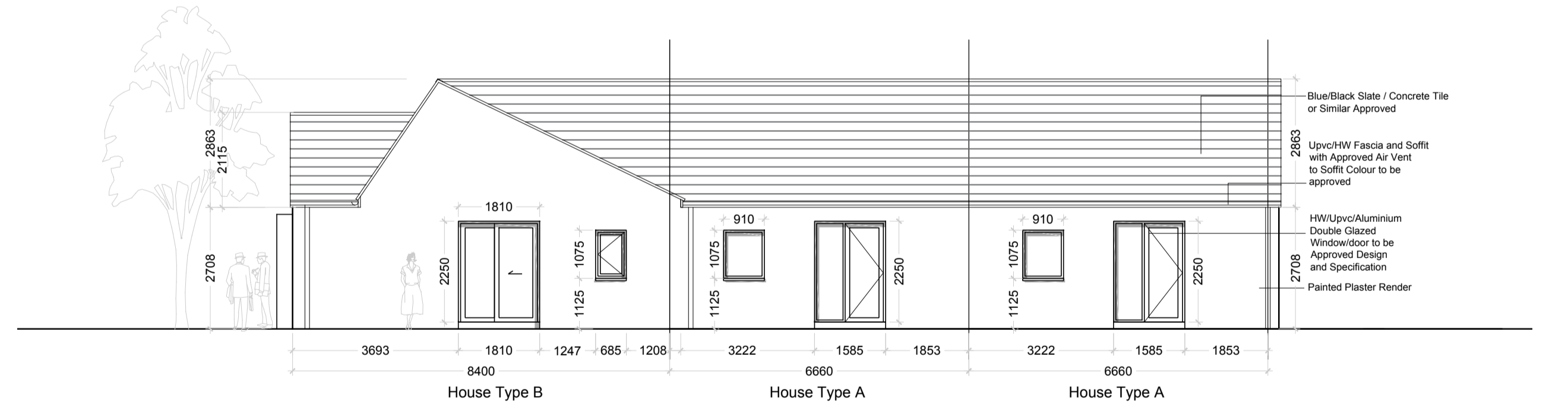
02
03 ROOF PLAN 1:100
BLOCK 5



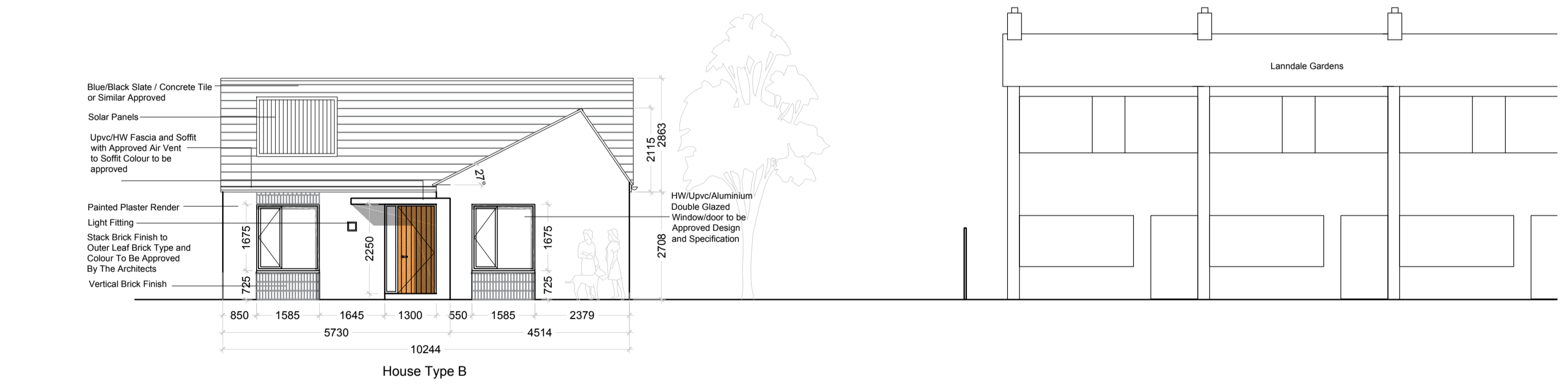
03
03 EAST ELEVATION 1:100
BLOCK 5



04
03 SOUTH ELEVATION 1:100
BLOCK 5



05
03 WEST ELEVATION 1:100
BLOCK 5



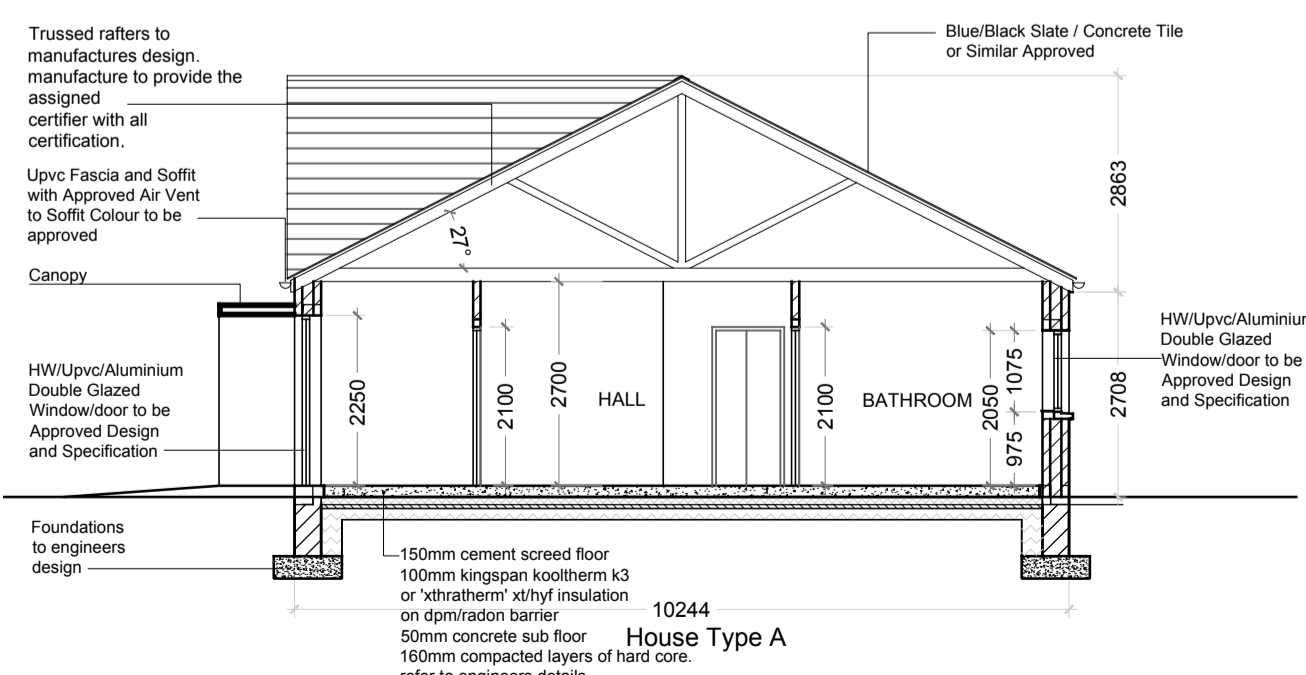
06
03 NORTH ELEVATION 1:100
BLOCK 5

HOUSE TYPE A (TERRACED)
1 BEDROOM / 2 PERSON
Floor Area 61.5 msq / 662 sqft

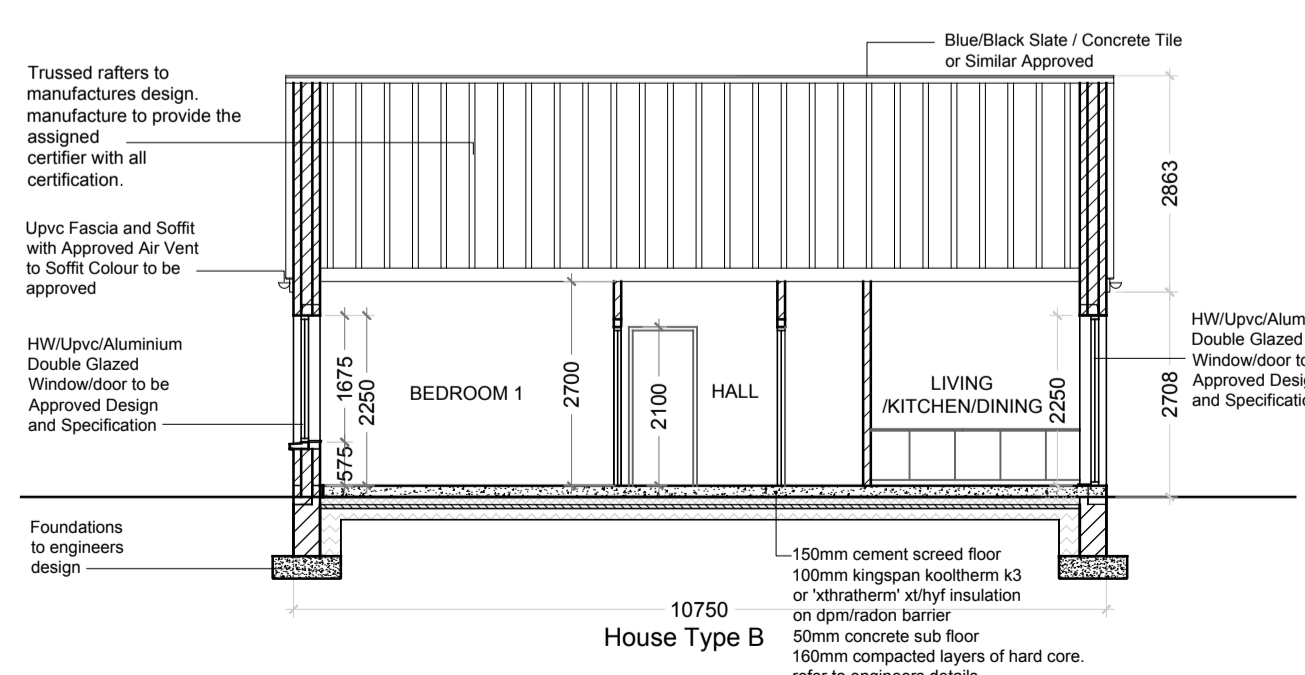
Quality Housing for Sustainable Communities space provision						
TYPE A	Dwelling Type	Gross Floor Area	Minimum Main Living room	Aggregate living area	Aggregate bedroom area	Storage
Target	1 Bed 2P house	44 m ²	11 m ²	23 m ²	11 m ²	2 m ²
Proposed	1 Bed 2P house	61.5 m ²	11.2 m ²	23 m ²	13.3m ²	2.4 m ²

HOUSE TYPE B (TERRACED)
2 BEDROOM / 3 PERSON
Floor Area 67 msq / 721.1 sqft

Quality Housing for Sustainable Communities space provision						
TYPE A	Dwelling Type	Gross Floor Area	Minimum Main Living room	Aggregate living area	Aggregate bedroom area	Storage
Target	2 Bed 3P house	60 m ²	13 m ²	28 m ²	20m ²	3 m ²
Proposed	2 Bed 3P house	67 m ²	13.2 m ²	28m ²	20.4m ²	4 m ²



07
03 SECTION A-A 1:100
BLOCK 5



08
03 SECTION B-B 1:100
BLOCK 5



CPR Note:
All works to be carried out using proper materials which are fit for the use they are intended and for the condition in which they are to be used.
All materials used in connection with the works to comply with the Construction Products Regulation (EU) No. 305/2011 and the harmonised technical specifications/standards that fall within the remit of the CPR No. 305/2011



DRAWING TITLE					
BLOCK 5 PART 8 SUBMISSION					
SCALE	1:100	DRAWING NUMBER	811-PB-106	JOB	FERNWOOD PK MAPLEWOOD RD
PROJECT	A	CADREVISION	811-PB-106	CLIENT	CLUID HOUSING ASSOC
REVISED BY	SG	DRAWN BY	AH	DATE	9/5/2018