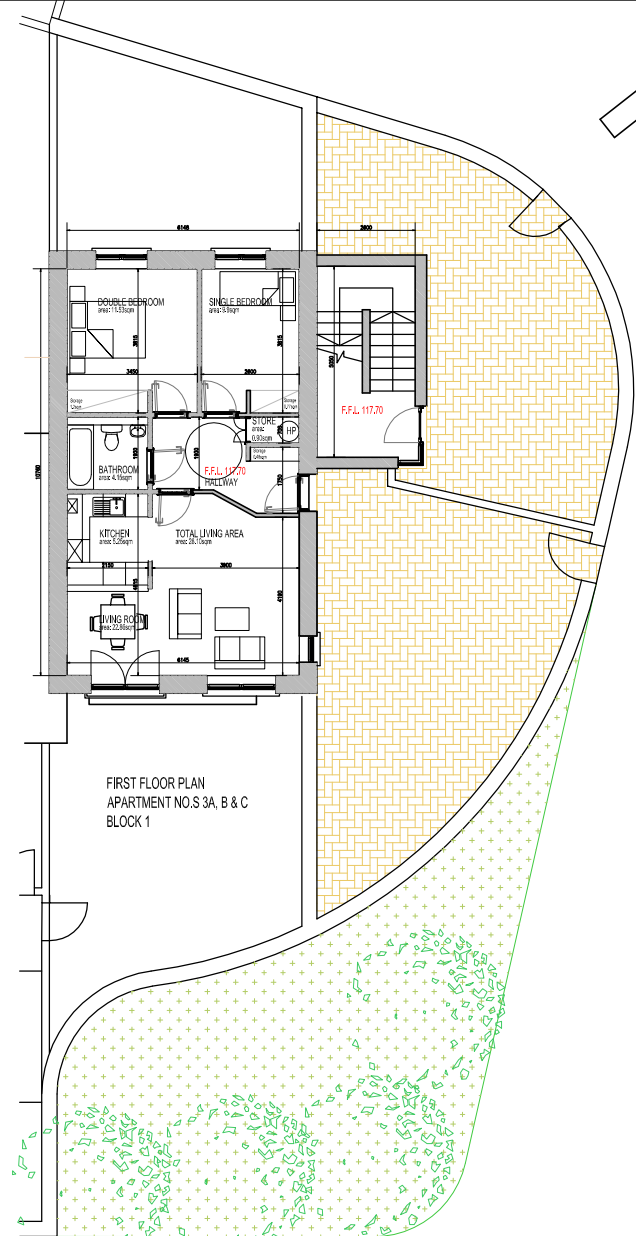
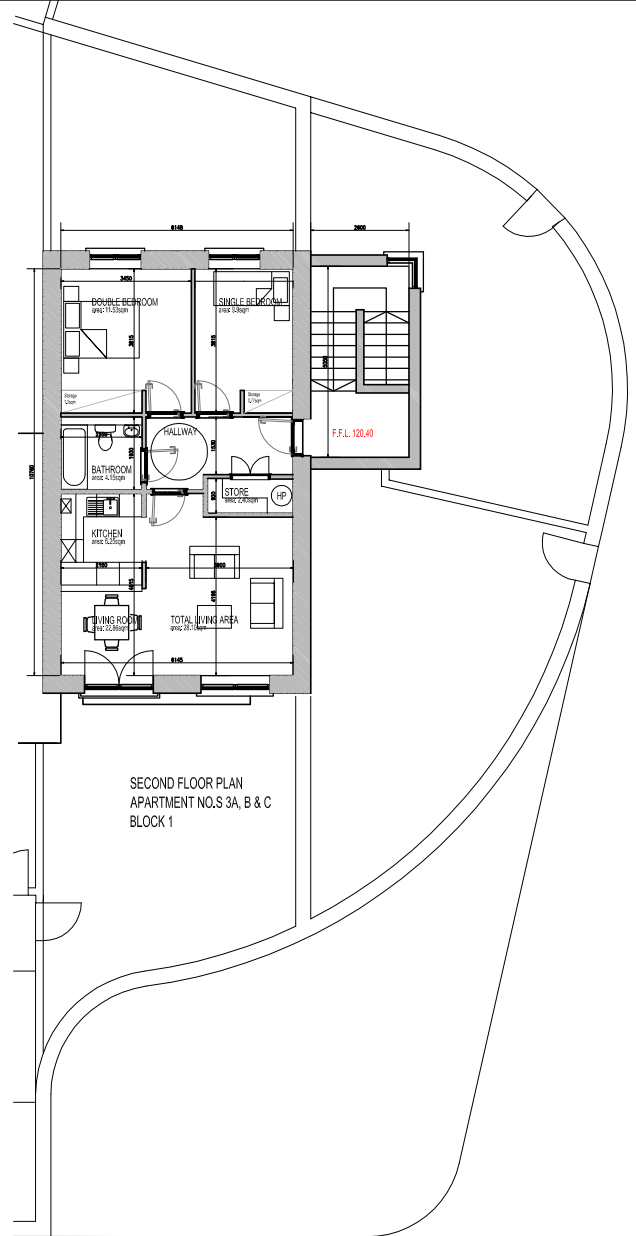


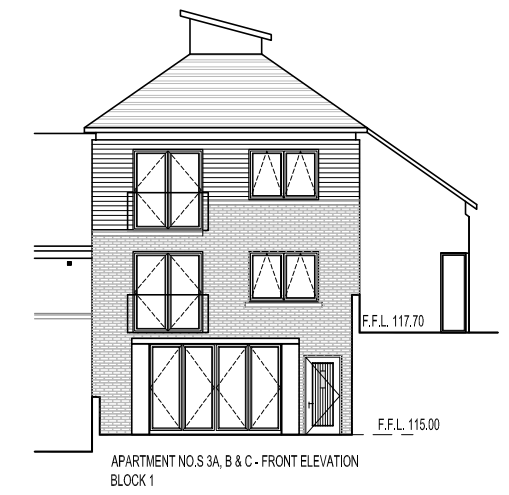
Apartment 3A		
2 bed 3 person apartments Ground floor plan		
Footprint: Ground	SqM	DCE
	68.10	63.00 [+5.10]
Total Storage	3.50	5.00 [+1.50]
WC	4.40	
Living / Dining Room	17.80	13.00 [+4.80]
Kitchen	6.80	
Aggregate Living Area	28.10	28.00 [+0.10]
Bedroom 1	8.50	
Bedroom 2	11.58	11.4 [+0.18]
Aggregate Bedroom Area	20.08	20.00 [+0.08]



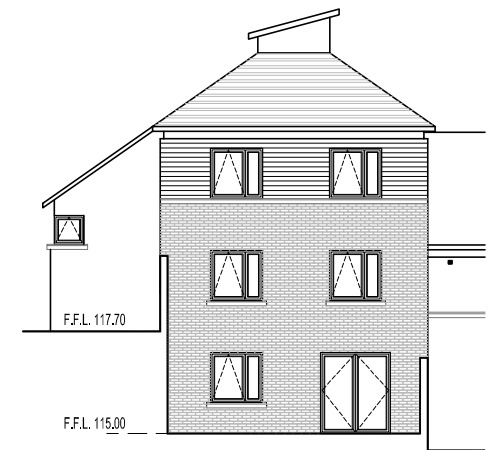
Apartment 3B		
2 bed 3 person apartments First floor plan		
Footprint: Ground	SqM	DCE
	66.50	63.00 [+3.50]
Total Storage	1.38	5.00 [+3.62]
WC	4.15	
Living / Dining Room	22.86	13.00 [+9.86]
Kitchen	5.25	
Aggregate Living Area	28.10	28.00 [+0.10]
Bedroom 1	9.90	
Bedroom 2	11.53	11.4 [+0.13]
Aggregate Bedroom Area	21.43	20.00 [+1.43]



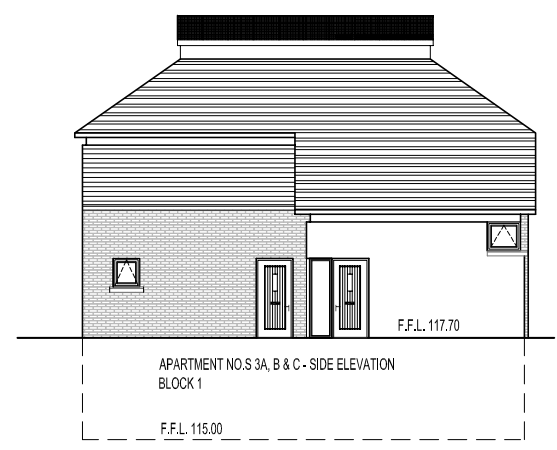
Apartment 3C		
2 bed 3 person apartments Second floor plan		
Footprint: Ground	SqM	DCE
	66.50	63.00 [+3.50]
Total Storage	2.40	5.00 [+2.60]
WC	4.15	
Living / Dining Room	22.86	13.00 [+9.86]
Kitchen	5.25	
Aggregate Living Area	28.10	28.00 [+0.10]
Bedroom 1	9.90	
Bedroom 2	11.53	11.4 [+0.13]
Aggregate Bedroom Area	21.43	20.00 [+1.43]



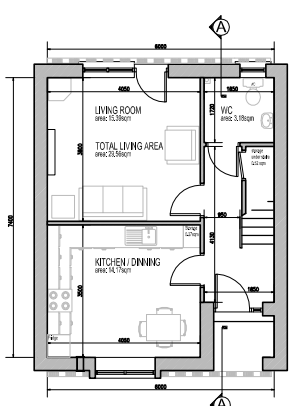
APARTMENT NO.S 3A, B & C - FRONT ELEVATION  
BLOCK 1



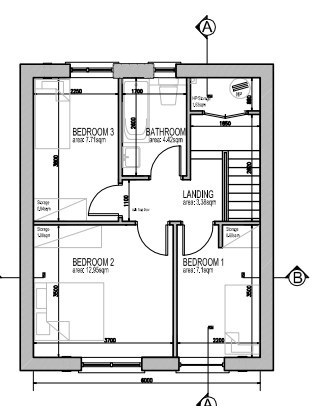
APARTMENT NO.S 3A, B & C - REAR ELEVATION  
BLOCK 1



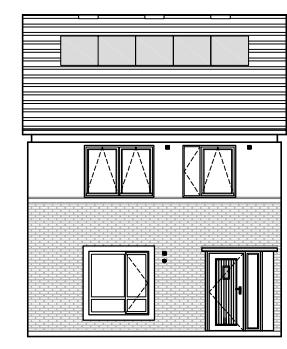
APARTMENT NO.S 3A, B & C - SIDE ELEVATION  
BLOCK 1



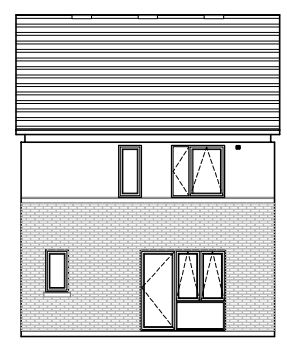
K4 - GROUND FLOOR PLAN



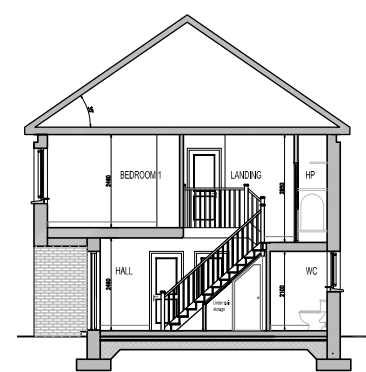
K4 - FIRST FLOOR PLAN



K4 - FRONT ELEVATION



K4 - REAR ELEVATION



K4 - SECTION A-A



K4 - SECTION B-B

K4 - House Description		
Preferred terrace type: Four person mid terrace house.		
K4 - Area Statement		
GF Footprint	SqM	DCE
	41.57	
FF Footprint	SqM	
	44.40	
Total GF+FF Area:	85.97	83.00 [+2.97]
Total Storage	3.86	4.00 [+0.14]
GROUND FLOOR		
WC	SqM	
	3.18	
Living Room	15.59	13.00 [+2.59]
Kitchen/Dining	14.17	
Aggregate Living Area	29.56	30.00 [+0.44]
FIRST FLOOR		
Bed Room-1	SqM	
	7.10	
Bed Room-2	12.95	13.00 [+0.05]
Bed Room-3	7.71	7.10 [+0.61]
Aggregate BR area	27.76	28.00 [+0.24]