

Proposed Variation No 3

South Dublin County Development
Plan 2022-2028



City Edge Strategic Urban Regeneration Framework 2026 (SURF)

Strategic Environmental Assessment: Non Technical Summary of the Environmental Report



STRATEGIC ENVIRONMENTAL
ASSESSMENT
NON TECHNICAL SUMMARY OF THE
ENVIRONMENTAL REPORT
PROPOSED VARIATION NO. 3: CITY
EDGE STRATEGIC URBAN
REGENERATION FRAMEWORK (SURF):
SOUTH DUBLIN COUNTY
DEVELOPMENT PLAN 2022 -2028

PREPARED UNDER THE PLANNING AND DEVELOPMENT
(STRATEGIC ENVIRONMENTAL ASSESSMENT Regulations
(S.I. 456 of 2025)

Contents

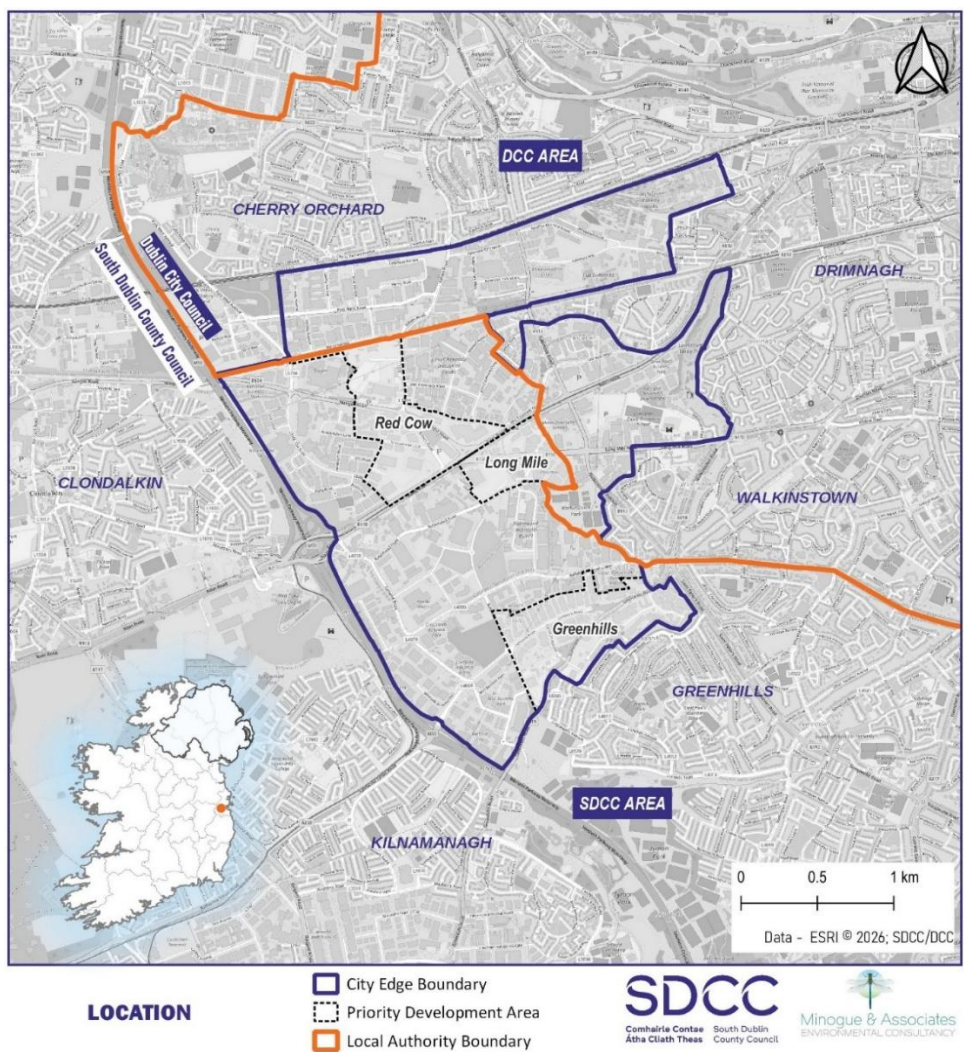
1	Context and Purpose	1
1.1	Background to Proposed Variation No.3: City Edge Strategic Urban Regeneration Framework (SURF)	2
1.2	Steps in the SEA Process	4
1.3	Consultation on scoping stage	4
1.4	Relationship to other plans and programmes.....	4
2	Describing the current environment	12
2.1	Biodiversity, Flora and Fauna.....	12
2.2	Population and human health.....	13
2.3	Climate Change	15
2.4	Water including Flooding	15
2.5	Soil and geology.....	16
2.6	Landscape and Townscape.....	16
2.7	Cultural heritage	16
2.8	Material Assets	17
2.9	Key Environmental issues per SEA topic.....	18
2.10	Evolution of the environment in the absence of the plan	19
2.11	Inter-relationships	20
3	Consideration of Alternatives	21
	Preferred Alternative identified for the South Dublin CDP 2022-2028	21
4	Summary of significant environmental effects of Proposed Variation	23
5	Mitigation measures	29
6	SEA Monitoring Table	32

1 Context and Purpose

An Environmental Report has been prepared as part of the Strategic Environmental Assessment of the Variation No 3(the plan) in South Dublin County. This is the Non-Technical Summary of this report. Figure 1.1 below presents the location and plan boundary.

The full City Edge Project area (covering South Dublin and Dublin City Local Authorities) comprises an area of approximately 700 hectares and is strategically located in terms of the Kildare Route railway line, the Luas Red Line, the M50 Motorway and N7 economic corridor and proximity to Dublin City Centre. Figure 1.1 below shows the City Edge Project plan area with the South Dublin County Council/Dublin City Council boundary illustrated.

Figure 1-1 City Edge Project lands the subject of the South Dublin County Development Plan Proposed Variation No:3



1.1 Background to Proposed Variation No.3: City Edge Strategic Urban Regeneration Framework (SURF)

The non-statutory City Edge Strategic Framework, which was published in August 2022, sets out a high-level vision for the regeneration of the City Edge lands to 2070 including up to 40,000 homes and 75,000 jobs. The Framework divides the lands into 5 Districts as identified below in Figure 1.2. Of these, the districts in the western, central and southern part of the City Edge Framework are largely within the planning remit of South Dublin County Council- these are Red Cow and Greenhills Districts and parts of Naas Road and Cherry Orchard Districts.

Figure 2-2 Districts across the City Edge Project



In terms of existing planning policy, the South Dublin CDP 2022 -2028 includes policies relevant to the Proposed Variation and the plan making approach to City Edge, including the following:

- Policy CS2: City Edge Regeneration Lands: 'Deliver a development framework for the regeneration of the City Edge lands in conjunction with Dublin City Council which underpins the strategic aims of the National Planning Framework and Regional Spatial and Economic Strategy'
- QDP16 Objective 2: To support the City Edge Strategic Framework and any future framework for the area in delivering urban growth and regeneration for the County and the wider Region, recognising its significant potential as the largest regeneration area in the country.

To progress the regeneration process for the City Edge Area, South Dublin County Council intends to bring forward a planning framework called the Strategic urban regeneration framework (SURF) as the proposed variation to the South Dublin County Development Plan 2022-2028. The SURF will provide a detailed planning guidance for

the future development of the area and will provide a statutory footing for consideration of planning applications within the City Edge plan area. The SURF will also propose to seek Candidate UDZ designation under the Planning and Development Act ,2024. At the time of writing this, the relevant sections of the Act have not commenced and therefore the Candidate UDZ status has not yet been sought.

The City Edge Project comprises three phases - Strategic Framework; Plan-Making; and Implementation. The first phase was completed in 2022 with the preparation of the City Edge Strategic Framework. The Framework contains an overarching vision for the City Edge project area and objectives as presented below:

Figure 2-3 Overarching Vision and Strategic Objectives from City Edge

3.4 OVERARCHING VISION

The overarching vision for City Edge is to support the long-term, resilient growth of the Dublin region by making the most of City Edge. Create a major new Urban Quarter on the edge of Dublin City, providing much needed new homes and employment space for the city, whilst ensuring the area's rich industrial history can continue to play an important role into the future.

Five new neighbourhoods, based on 15-minute city principle, will celebrate the area's existing qualities such as the Grand Canal, the River Camac and Lansdowne Valley Park. Whilst a network of new biodiversity rich parks, green and blueways, public transport, local high streets, community facilities and energy networks will help to meet our shared climate challenges.

3.5 STRATEGIC OBJECTIVES



Theme	Objective	The objectives below break down the vision into 8 main themes, and were used to direct the tested scenarios and strategic brief.
LIVEABLE CITY	Follow compact growth & 15-minute city principle	Create a compact urban environment with an active travel focus, that supports the health and wellbeing of residents, through access to opportunities, services, resources, and green and natural amenities.
ECONOMY	Create a resilient and diverse employment offer with scope for up to 65,000 - 75,000 jobs	Create a resilient and diverse employment offer with scope for between 65,000 and 75,000 jobs.
HOUSING	Accommodate a range and variety of new homes for up to 75,000 - 85,000 people	Accommodate a mixed and balanced community of between 75,000 and 85,000 new people with a choice of different housing types, tenures and sizes.
NATURAL INFRASTRUCTURE	Target 50% green cover	Target 50% green cover to meet the needs of the future population while promoting a reintroduction of biodiversity and combating climate change impacts such as flood risk.
MOVEMENT	Focus development on the provision of active and public transport	Ensure Transport Oriented Development by focussing new mixed-use and compact urban development on enhanced active travel and public transport corridors.
CHARACTER	Knit into existing neighbourhoods and create a series of character areas that enhance Dublin	Integrate the renewal of City Edge with existing residential communities by supporting good placeshaping within the five local neighbourhoods and by celebrating local distinctiveness and ensuring climate resilient design.
COMMUNITY	Integrated urban services and resources	Support the needs of intergenerational communities through the timely provision of community, educational, health and social facilities.
SUSTAINABILITY	Fast-track to zero carbon and zero waste	Fast track to zero carbon and zero waste to help address climate change and promote sustainable communities through the 15-minute city principle.
DELIVERY	Create a deliverable and credible framework	Ensure a coordinated approach to the funding and delivery of infrastructure and utilities in order that land can be developed in a timely and coherent manner that realises the City Edge Vision.

1.2 Steps in the SEA Process

The steps involved in SEA are as follows:

- Screening (determining whether or not SEA is required).
- Scoping (determining the range of environmental issues to be covered by the SEA).
- ***The preparation of an Environmental Report (current stage)***
- The carrying out of consultations.
- The integration of environmental considerations into the Plan or Programme.
- The publication of information on the decision (SEA Statement).

1.3 Consultation on scoping stage

Submissions received at scoping stage have all informed the scope of this SEA. Consultation undertaken by South Dublin County Council over early 2026 has also informed the plan preparation.

1.4 Relationship to other plans and programmes

It is a requirement of the SEA to review and assess how the draft strategy may interact with other plans and programmes. This review was undertaken as part of the SEA. See Chapter 3 of the Environmental Report for more detail. Arising from the review, the following Table 1.1 highlights key implications from this review and how it relates to the UN sustainable development goals. The objectives in the first column are also used to undertake the detailed assessment of the plan as shown in Chapter Seven of the SEA ER.

Table 1.1. KEY PRINCIPLES AND IMPLICATIONS FOR THE SEA OF THE VARIATION TO SOUTH DUBLIN CDP 2022 -2028 & EPA IRELAND’S ENVIRONMENT 2024.

SDCC Development Plan Strategic Environmental Objectives (SEOs)	EPA Ireland’s Environment 2024	UN Sustainable Development Goals
<p>Biodiversity (Flora & Fauna) (B)</p> <p>(B_1) Preserve, protect, maintain and where appropriate, restore the terrestrial, aquatic and soil biodiversity, of international, EU and nationally designated sites, protected species and habitats.</p> <p>(B_2) Ensure no adverse effects on the integrity of any European site, regarding its qualifying interests, associated conservation status, structure and function.</p> <p>(B_3) Maintain and where appropriate, enhance the biodiversity value of local designated and non-designated ecological and heritage areas, which function as stepping-stones for migration, dispersal and genetic exchange of wild species.</p> <p>(B_4) Enhance biodiversity in line with the National Biodiversity Strategy and its targets.</p>	<p>Nature 1. The Irish landscape is heavily modified by humans. Many of the few remaining natural and semi-natural habitats are in a poor or bad state. Research in Ireland highlights that 85% of our protected habitats and almost one third of our protected species of flora and fauna are in unfavourable status, over half our native plant species are in decline and more than 50 bird species are of high conservation concern. The leading causes of these declines are changes in agricultural practices, including intensification; pollution; the increasing spread of invasive species; and our changing climate</p> <p>Nature 4. Nature can recover if given the opportunity.</p>	<p>Goal 3: Ensure healthy lives and promote well-being for all at all ages.</p> <p>Goal 6: Ensure availability and sustainable management of water and sanitation for all.</p> <p>Goal 13: Take urgent action to combat climate change and its impacts.</p> <p>Goal 14: Conserve and sustainably use the oceans, seas and marine resources for sustainable development.</p> <p>Goal 15: Protect, restore and promote sustainable use of terrestrial ecosystems, sustainably manage forests, combat desertification, and halt and reverse land degradation and halt biodiversity loss</p>
<p>Population & Human Health (PHH)</p> <p>(PHH_1) Provide high quality residential, community, working and recreational environments with access to sustainable transport options</p> <p>(PHH_2) Promote economic growth to encourage retention of working age population and funding of sustainable development and environmental protection.</p> <p>(PHH_3) Ensure that existing population and planned growth is linked with the required infrastructure and the services</p>	<p>Environment, Health and Wellbeing</p> <p>1. Our health and wellbeing is inextricably linked to our surrounding environment. The health benefits of a vibrant natural world are countless, providing us with breathable air, drinkable water, productive soils and spaces for us to spend time in and enjoy, enhancing both our physical and mental health and wellbeing.</p> <p>2. The harmful environmental exposures causing disease and early death are</p>	<p>Goal 3: Ensure healthy lives and promote well-being for all at all ages.</p> <p>Goal 6: Ensure availability and sustainable management of water and sanitation for all.</p> <p>Goal 7: Ensure access to affordable, reliable, sustainable and modern energy for all.</p> <p>Goal 9: Build resilient infrastructure, promote inclusive and sustainable industrialisation and foster innovation.</p> <p>Goal 11: Make cities and human settlements inclusive, safe, resilient and sustainable.</p>

SDCC Development Plan Strategic Environmental Objectives (SEOs)	EPA Ireland's Environment 2024	UN Sustainable Development Goals
(PHH_4) Protect human health and well-being from environment-related pressures.	modifiable. Reducing pollution, adapting to and mitigating climate impacts, and restoring ecosystems can have enormous benefits for our health and wellbeing. Solutions that can help tackle one issue can have multiple co-benefits for others. Implementation of solutions that can maximise benefits across multiple domains should be prioritised. 3. The impacts of environmental hazards and exposures are not equal across society. More efforts are required to assess inequalities in both levels of exposure and impact at a finer geographical scale to determine whether measures implemented are helping to bridge the gap.	Goal 12: Ensure sustainable consumption and production patterns. Goal 13: Take urgent action to combat climate change and its impacts. Goal 14: Conserve and sustainably use the oceans, seas and marine resources for sustainable development
Land, Soils & Geology (SG) (LSG_1) Safeguard sensitive soil, resources and geological heritage sites against pollution and degradation. (LSG_2) Promote the sustainable use of infill and brownfield sites over the use of greenfield within the city.	Soils 2. The protection of soils lacked a legal and policy framework until recently and the publication of the EU Soil Strategy in 2021 and the proposed soil monitoring law in 2023 are significant. Ireland faces challenges in achieving the objectives of the EU Soil Strategy and in implementing the proposed soil monitoring law. However, getting this right would significantly advance the protection of Ireland's soil health.	Goal 11: Make cities and human settlements inclusive, safe, resilient and sustainable. Goal 12: Ensure sustainable consumption and production patterns. Goal 13: Take urgent action to combat climate change and its impacts. Goal 15: Protect, restore and promote sustainable use of terrestrial ecosystems, sustainably manage forests, combat desertification, and halt and reverse land degradation and halt biodiversity loss.
Water Quality (W) (W_1) Protect and where necessary improve and maintain water quality and the management of watercourses and groundwater and coastal waters in compliance with the requirements of the	Water 2. We need to see full implementation of existing environmental legislation and high compliance rates across all regulated activities. A regulatory regime to address	Goal 6: Ensure availability and sustainable management of water and sanitation for all. Goal 11: Make cities and human settlements inclusive, safe, resilient and sustainable.

SDCC Development Plan Strategic Environmental Objectives (SEOs)	EPA Ireland's Environment 2024	UN Sustainable Development Goals
<p>Water Framework Directive objectives and measures.</p> <p>(W_2) Avoid inappropriate development in areas at risk of flooding and areas that are vulnerable to current and future erosion.</p> <p>(W_3) Integrate sustainable water management solutions (such as SuDS, porous surfacing and green roofs) into development proposals.</p>	<p>activities that impact hydromorphology is also required. All measures must be sufficiently targeted to the water quality issue and location to ensure that they deliver improvements.</p> <p>4. It is essential to build climate resilience into water quality management and into water services. Plans - such as the Water Action Plan, the Water Quality and Water Services Climate Adaptation Plan, and Uisce Éireann's National Water Resources Plan - are key to identifying risks and adaptation measures.</p>	<p>Goal 13: Take urgent action to combat climate change and its impacts.</p> <p>Goal 14: Conserve and sustainably use the oceans, seas and marine resources for sustainable development.</p> <p>Goal 15: Protect, restore and promote sustainable use of terrestrial ecosystems, sustainably manage forests, combat desertification, and halt and reverse land degradation and halt biodiversity loss.</p>
<p>Air Quality & Noise (AN)</p> <p>(AN_1) To avoid, prevent or reduce harmful effects on human health and the environment, resulting from emissions to air from all sectors-with particular reference to emissions from transport, residential heating and industry.</p> <p>(AN_2) Minimise travel related emissions and encourage a modal change from car to more sustainable forms of transport.</p> <p>(AN_3) Minimise noise emissions associated with traffic and transport and other noise and wind related industry etc.</p>	<p>Air: 2. Currently, Ireland is not meeting the guidelines set by WHO for multiple pollutants including fine particulate matter and nitrogen dioxide. We can actively improve our local air quality by changing to more sustainable forms of transport and heating.</p> <p>Noise 1: Environmental noise is the second biggest environmental cause of health problems in the EU. In Ireland, over 1 million people are likely to be exposed to noise levels above the mandatory reporting threshold</p>	<p>Goal 7: Ensure access to affordable, reliable, sustainable and modern energy for all.</p> <p>Goal 11: Make cities and human settlements inclusive, safe, resilient and sustainable.</p> <p>Goal 13: Take urgent action to combat climate change and its impacts.</p>
<p>(CC_1) Minimise contribution to Climate Change by adopting mitigation and adaptation measures.</p>	<p>Climate change</p> <p>1. The science is clear - climate change is already having an impact on people,</p>	<p>Goal 11: Make cities and human settlements inclusive, safe, resilient and sustainable.</p>

SDCC Development Plan Strategic Environmental Objectives (SEOs)	EPA Ireland's Environment 2024	UN Sustainable Development Goals
<p>Climate Change (CC)</p> <p>(CC_2) Integrate sustainable design solutions into the city's infrastructure (e.g. energy efficient buildings; green infrastructure).</p> <hr/> <p>(CC_3) Contribute towards the reduction of greenhouse gas emissions in line with national targets.</p> <hr/> <p>(CC_4) Encourage and promote development resilient to the effects of climate change.</p> <hr/> <p>(CC_5) Promote the use of renewable energy, energy efficient development and increased use of public transport.</p>	<p>animals and plants in Ireland. The evidence is unequivocal, Ireland is being affected by climate change now, and the severity of the impacts is likely to increase significantly in the coming years.</p> <p>2. Ireland needs to be resilient to ongoing and future climate change impacts. The implementation of climate adaptation measures is currently too slow and fragmented. More cross-sectoral and integrated adaptation actions can deliver multiple benefits. Doing better requires more financing, working with people and nature, monitoring and evaluating outcomes and increasing public and private sector involvement.</p> <p>3. Ireland is not currently projected to achieve its 2030 emissions reduction targets or to meet national or EU reduction targets. Despite Irish climate action ambitions, significantly faster progress is needed to decarbonise all sectors of Ireland's economy and implement adaptation actions to deliver a resilient and sustainable future for the benefit of all society.</p> <p>4. It is critical that people and communities are supported to achieve the changes required to address climate change. To overcome the practical barriers to climate action, and to ensure that objectives are both achievable and</p>	<p>Goal 12: Ensure sustainable consumption and production patterns.</p> <p>Goal 13: Take urgent action to combat climate change and its impacts.</p>

SDCC Development Plan Strategic Environmental Objectives (SEOs)	EPA Ireland's Environment 2024	UN Sustainable Development Goals
	equitable, understanding the beliefs, attitudes and challenges facing people in Ireland is crucial. Policy should be designed and implemented so that the desirable action becomes the default action	
Cultural Heritage (CH) (CH_1) Protect places, features, buildings and landscapes of cultural, archaeological and / or architectural heritage from adverse impact from development	1. Our health and wellbeing is inextricably linked to our surrounding environment. The health benefits of a vibrant natural world are countless, providing us with breathable air, drinkable water, productive soils and spaces for us to spend time in and enjoy, enhancing both our physical and mental health and wellbeing	Goal 11: Make cities and human settlements inclusive, safe, resilient and sustainable. Goal 13: Take urgent action to combat climate change and its impacts.
Landscape & Visual (LV) (LV_1) Protect and maintain the special qualities of the landscape character, especially with regard to areas of high amenity, the Dublin Mountain Area, and the River Liffey and River Dodder Valleys.	Land 2. We cannot make more land, so must use our land wisely. Part of this challenge is to understand how best to use our land for social and economic benefit in a way that supports, rather than damages, the environment. The national land use review has a vital role to play in identifying land use opportunities and constraints. Land 3. Land use offers natural, social and economic benefits. We can use our land in ways that support climate action, nature restoration, protection of water quality and a sustainable economy through implementing a multiple benefits approach. To do this we must reframe how we approach national land use decisions. We must take a holistic and integrated view across all the	Goal 11: Make cities and human settlements inclusive, safe, resilient and sustainable. Goal 13: Take urgent action to combat climate change and its impacts.

SDCC Development Plan Strategic Environmental Objectives (SEOs)	EPA Ireland's Environment 2024	UN Sustainable Development Goals
	<p>demands there are on Ireland's land. Emerging evidence shows that we can implement solutions that deliver natural, social and economic capital together.</p>	
<p>Material Assets (MA)</p> <p>(MA_1) Make best use of existing infrastructure, promote the sustainable development of new infrastructure to match population distribution and protect existing assets, to meet the needs of South Dublin's population.</p> <p>(MA_2) Promote the circular economy, reduce waste, and increase energy efficiencies.</p> <p>(MA_3) Ensure there is adequate sewerage and drainage infrastructure in place to support new development.</p> <p>(MA_4) A reduction in energy demand from the transport sector and support moves to electrification of road and rail transport modes</p>	<p>Transport:</p> <ol style="list-style-type: none"> 1. The transport sector is a major consumer of energy and material resources and is a source of environmental pollution, particularly greenhouse gases, air pollutants and noise. 2. A sustainable, accessible and efficient transport system is not only important for the environment and wellbeing but is also a key enabler for the economy. 3. High-level integration between land use planning and transport planning is needed to achieve more compact development, incentivise a move away from private cars, and move trips to rail, bus, cycling and walking. Shifting to these modes is an essential part of a sustainable and climate-neutral transition for the transport sector <p>Energy:</p> <ol style="list-style-type: none"> 1. Established technologies, such as wind energy, solar photovoltaics and bioenergy, will be key in meeting short-term emission reduction targets (i.e. 2030), whereas significant growth in offshore wind infrastructure is expected to be the key essential element of future energy systems. Enhanced regulatory 	<p>Goal 6: Ensure availability and sustainable management of water and sanitation for all.</p> <p>Goal 7: Ensure access to affordable, reliable, sustainable and modern energy for all.</p> <p>Goal 9: Build resilient infrastructure, promote inclusive and sustainable industrialization and foster innovation.</p> <p>Goal 11: Make cities and human settlements inclusive, safe, resilient and sustainable.</p> <p>Goal 12: Ensure sustainable consumption and production patterns.</p> <p>Goal 13: Take urgent action to combat climate change and its impacts.</p> <p>Goal 15: Protect, restore and promote sustainable use of terrestrial ecosystems, sustainably manage forests, combat desertification, and halt and reverse land degradation and halt biodiversity loss.</p>

SDCC Development Plan Strategic Environmental Objectives (SEOs)

EPA Ireland's Environment 2024

UN Sustainable Development Goals

and planning frameworks, and support schemes, are required to accelerate the deployment of renewables, realise co-benefits and manage trade-offs.

2. Growing demand for electricity is an anticipated by-product of the expected electrification of the heat and transport sectors. However, additional and rapidly increasing electricity demand growth from large energy users is putting pressure on energy systems.

Circular Economy and Waste

1. Ireland has a damaging linear economy characterised by the overconsumption of materials and goods and the growing volumes of waste and greenhouse gas emissions. While recycling tonnages are increasing, these increases are being cancelled out by the growing amount of waste generated. Current trends pose a high risk of not meeting mandatory recycling targets. The challenge for Ireland is to reverse these trends and significantly reduce waste production.

2. Ireland's capacity to collect and treat waste is vulnerable and underperforming, with an over-reliance on other countries to treat our recycling materials, general municipal and hazardous wastes

2 Describing the current environment

2.1 Biodiversity, Flora and Fauna

Currently the lands are dominated by built land and artificial surfaces as Figure 2.1 shows. The Grand Canal is the nearest significant ecological feature and runs along the northern border of the plan area. This is also a proposed Natural Heritage Area under the Wildlife Act. A Natura Impact Report that assesses the effects of the Variation on the European Sites within the wider area (Special Areas of Conservation and Special Protection Areas) accompanies this SEA Environmental Report and the Variation itself. See also Figure 2.2 overleaf for designated sites.

Figure 2-1 Aerial Imagery of the Proposed Variation

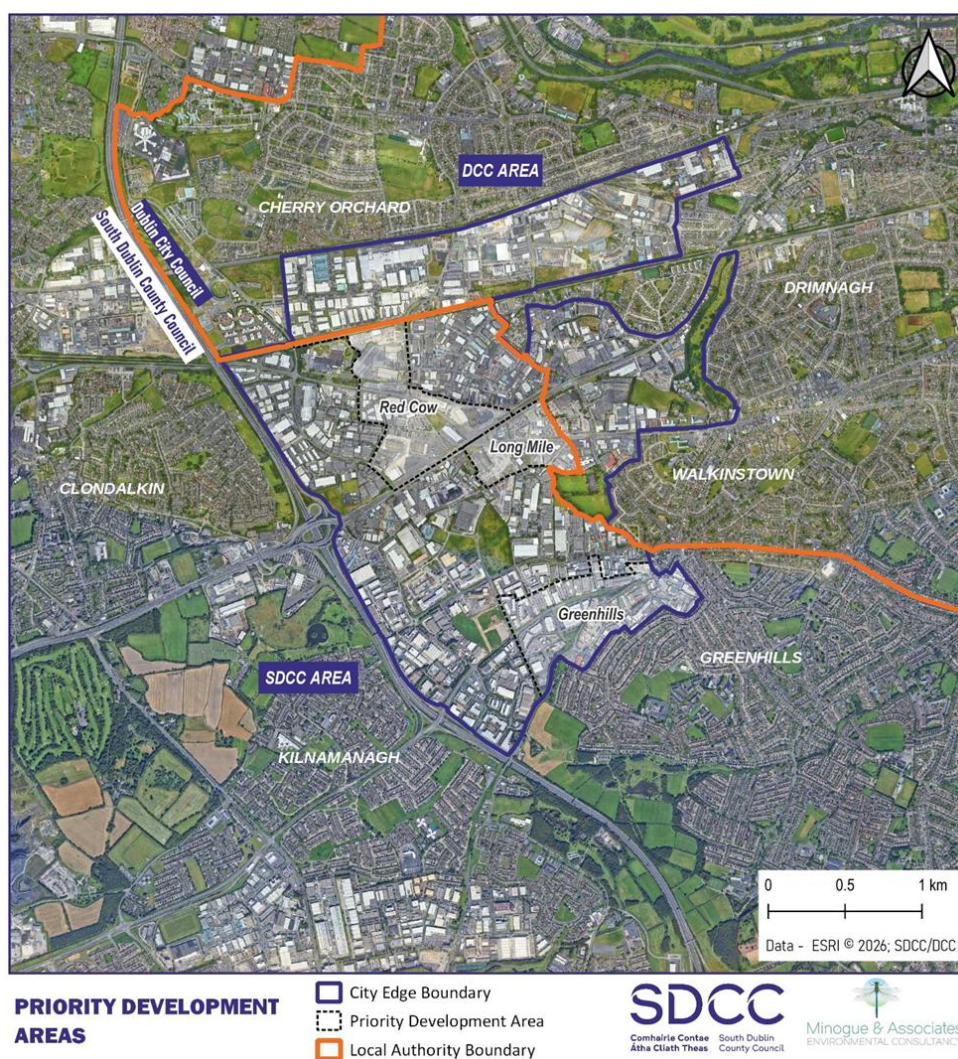
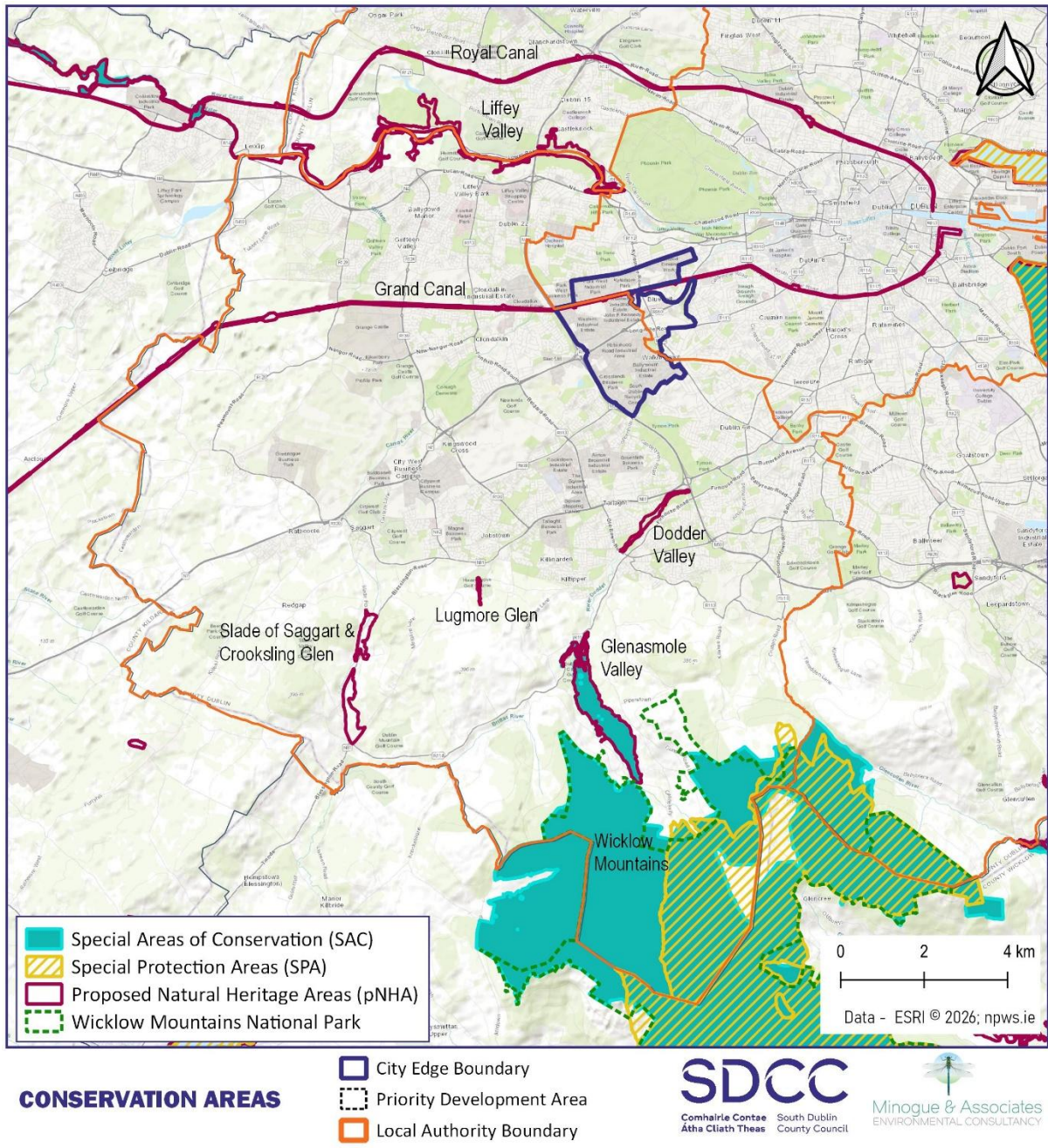


Figure 2-2 Sites designated for Nature Conservation



2.2 Population and human health

The City Edge area has been historically viewed as a traditional industrial area comprising manufacturing and warehousing uses, along with wholesale/retail trade uses in more recent times. The area is continuing to change and evolve with new higher density residential development granted permission recently around the Naas Road, Kylemore Road, Walkinstown Avenue and Ballymount Road locality which, if brought forward on site, could result in a substantial uplift in the provision of housing units and the resident population in the area¹.

¹ [4-Economic-Strategy.pdf \(cityedge.ie\)](#)

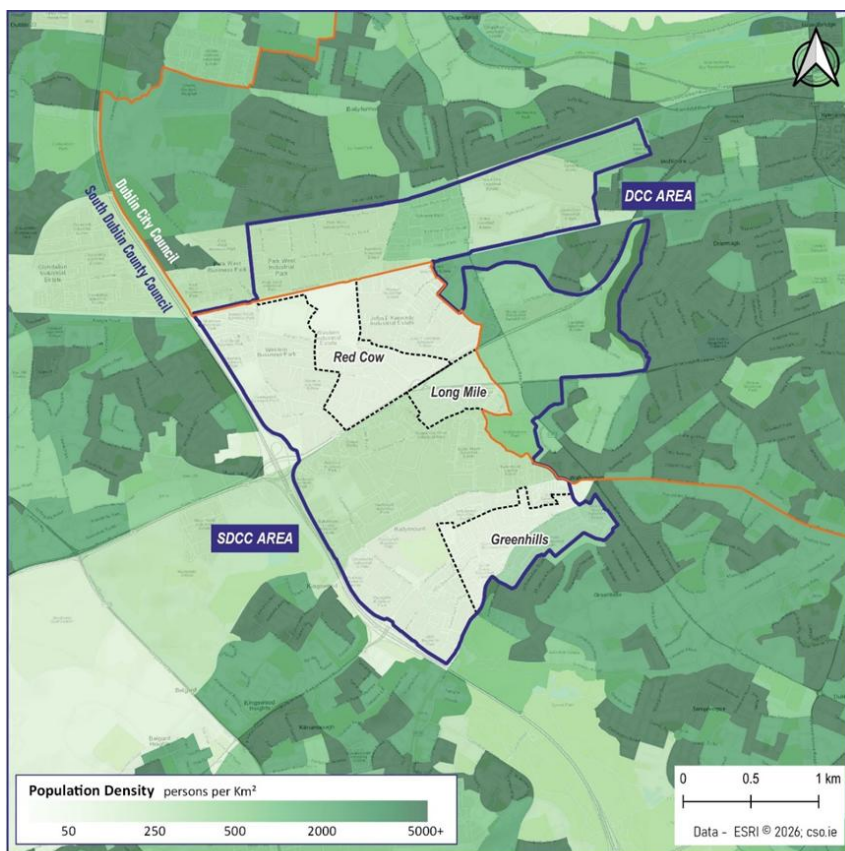
COMAH sites also known as Seveso sites, are defined as industrial sites that, because of the presence of dangerous substances in sufficient quantities, are regulated under EU Directive. There are three Seveso sites within the SDCC area of City Edge, one upper tier and two lower tier sites as follows:

- Upper Tier Establishments
 - o BOC Gases Ltd. Ireland, Bluebell Industrial Estate
- Lower Tier Establishments
 - o Irish Distillers Ltd, Robinhood Road
 - o Kayfoam Wolfson, Bluebell Industrial Estate

Where development takes place outside the Priority Development Area (PDAs), standard HSA (Health and Safety Authority) guidance will be applied in addition to Policy EDE26 of the CDP 2022-2028.

Figure 2.3 illustrates population density within the plan area and Proposed Variation lands based on 2022 Census data. It is notable, given the current land use within the Variation lands, the low pattern of population density, reflecting the low levels of residential development.

Figure 2-3 Population density



POPULATION DENSITY
Small Area Population Statistics 2022

 City Edge Boundary
 Priority Development Area
 Local Authority Boundary

SDCC
 Conhairle Contae South Dublin
 Atha Cliath Theas County Council

Minogue & Associates
 ENVIRONMENTAL CONSULTANCY

2.3 Climate Change

The South Dublin County Council *Climate Action Plan 2024-2029* sets out three targets that are interdependent:

- A 51% reduction in greenhouse gas emissions in line with our National Climate Objective by 2030, while striving for neutrality before 2050 as per South Dublin County's participation in the EU Mission for 100 Climate Neutral and Smart Cities (Net Zero Cities).
- A Climate Resilient City prepared for the known and unknown impacts of climate change
- A Just Transition meaning that the actions we take do not cause harm.

At plan level, contributing to the legally binding net Zero no later than 2050 and a 51% reduction in emissions by end of 2030 included in the Climate Action and Low Carbon Development (Amendment) Act 2021 will mean embedding climate change actions through all land use planning including the Proposed Variation

The key responses in the Proposed Variation to the challenges posed by climate change in the built environment include:

- Climate: To create a climate resilient new urban quarter based on active travel and public transport, compact settlements, multi-functional blue-green infrastructure and sustainable energy.
- Sustainable Travel: Promote and facilitate a transition to more sustainable modes of transport by promoting active travel measures, improved public transport and reducing a reliance on vehicular movements.
- Natural Infrastructure: Create an interlinked system of blue-green spaces that provide for recreation, biodiversity, nature restoration, sustainable drainage and active travel
- Energy: Promote pathways to net zero carbon through supporting sustainable energy projects within City Edge including District Heating²

2.4 Water including Flooding

The Water Framework Directive establishes a framework for the protection of all waters including rivers, lakes, estuaries, coastal waters, groundwater, canals and other artificial bodies for the benefit of everyone. The plan area is located within the Liffey and Dublin Bay catchment (09) and the Liffey sub-catchment (SC_090). The River Camac is the main river flowing through the Proposed Variation lands, this is of poor ecological status based on most recent data and is at risk of not meeting the WFD objectives. It extends for around 13.57km and drains ultimately to the Liffey Estuary Upper waterbody (IE EA 090 0400). The River Camac is one of the most modified river catchments in Dublin, with extensive hydro morphological changes extending back through centuries to accommodate milling, agriculture, and urban expansion. This has resulted in a degraded

² From the Overarching Strategic Objectives of the SURF.

river ecosystem with impacts on fish, plant, and invertebrate species, causing some parts of the River Camac catchment to be classified as "Poor" Ecological Status under the WFD³.

The Flood Risk Guidelines seek to ensure that development avoids flood risk, substitute less vulnerable uses when avoidance is not possible, and mitigate and manage the risk where avoidance and substitution are not possible. Certain areas across the County are at risk of flooding from various sources including groundwater, pluvial, fluvial and estuarial. There are various historic and predictive indicators of flood risk in the County, including along the Camac. A Strategic Flood Risk Assessment (SFRA) as required by 'The Planning System and Flood Risk Management Guidelines for Planning Authorities' (Department of the Environment, Heritage and Local Government and Office of Public Works, 2009) and Circular PL 2/2014 (Department of Environment, Community and Local Government), was undertaken alongside the preparation of the Proposed Variation by Nicholas O'Dwyer (NOD). This included a flood risk review of the Proposed Variation.

2.5 Soil and geology

The plan area is underlain by limestone bedrock which is well draining. Within the plan area, the built land is identified as 'made soils', these are soils which have been disturbed, transported or manipulated by activity in the urban environment.

As part of the baseline studies completed for Phase 1 of the City Edge project, a desk-based assessment of the Contaminated Land potential associated with the study area was undertaken. The review has identified constraints and opportunities. As a result of the current and historic land uses, it is likely that soil and groundwater in the study area have been locally impacted by various contaminants of concern. Further quantitative assessment of the study area would be required in tandem with the phases of the regeneration to accurately determine the extent of any impacts. It is also likely that contaminated land impacts are localised to specific sources and industrial processes within the study area.

2.6 Landscape and Townscape

The dominant landuse as classified by Corine (2018) in the Variation lands are Industrial and Commercial Units and Discontinuous Urban Fabric. There are currently no scenic routes or protected views within the Variation lands. The areas of open space with more natural character are associated with the Grand Canal corridor and amenity spaces. Smaller pockets of open space and architectural features and landmarks, although not plentiful, do contribute to local character.

2.7 Cultural heritage

Archaeological sites are legally protected. Historic maps show the development of the Framework Area/Variation lands as an industrial district in the post-medieval period. Mills, factories and other industries are depicted within the Framework Area, particularly in the 19th and 20th centuries. While many of these structures are no longer extant, there is potential for sub-surface elements of these sites to survive within the Framework Area. The Bridge over the Grand Canal at Ballyfermot is a protected structure. With respect to this

³ Hydromorphology and restoration study of the River Camac, Dublin JBA Ireland for South Dublin CC.

the SDCC Record of Protected Structures contains the entry 'Ballyfermot Bridge, Gallanstown: Stone Bridge' (RPS Ref. 116).

There is also an entry for the Greenhills area in the Record of Monuments and Places referenced DU022-002 which refers to 'Flat Cemetery: Greenhills'.

No previously unknown features of archaeological potential could be identified from the aerial photography and satellite imagery, given the heavily developed nature of the plan area.

2.8 Material Assets

Material assets include transport infrastructure, power generation plants and supply networks, water supply, wastewater treatment infrastructure and waste disposal sites.

Wastewater: South Dublin County's wastewater is currently treated at Ringsend Wastewater Treatment Plant (WwTP). Foul water generated by the operation phase of the plan will eventually be discharged to the sea at Dublin Bay following treatment at the Ringsend WWTP. Information from the most recent (2024) Annual Environmental Report is summarised in the SEA ER. The commencement of the Greater Dublin Drainage Strategy will result in construction of further wastewater treatment at Clonsilla in Co Fingal that will increase the capacity at Ringsend WWTP further.

Water supply: Currently, the Dublin Region Water Supply Area is defined by the combined areas served by the Dublin Region Water Supply Schemes, operated by the local authorities on behalf of Irish Water, namely:

- Liffey Water Treatment Plant at Ballymore Eustace (South Dublin County Council);
- Liffey Water Treatment Plant at Leixlip (Fingal County Council);
- Vartry Plant at Roundwood (South Dublin County Council);
- Dodder Plant at Ballyboden (South Dublin County Council); and
- Bog of the Ring Groundwater (Fingal County Council).

Waste Management: The Waste Management Act 1996 requires Local Authorities to make a waste management plan either individually or collectively for their administrative areas. In 2015, South Dublin was guided by the Eastern Midlands Waste Management Plan 2015-2021 which provided the framework for solid waste management in the region. Post 2021, waste management in Ireland is guided by the first National Waste Management Plan for a Circular Economy, which will replace the existing regional plans. This Plan sets out a framework for the prevention and management of waste in Ireland for the period 2023 to 2029.

Transport: South Dublin is traversed by four major roads networks - the M50, the N7, the N4/M4, the N81 and the R136. The Proposed Variation includes public transport links from the Luas Red Line, the Grand Canal Greenway to the north and proximity to the Bus Connect Kimmage to Dublin City Centre scheme. The plan area also includes heavily

trafficked roads including the Naas Road and is immediately adjacent to the M50 orbital route.

2.9 Key Environmental issues per SEA topic

Key environmental issues are summarised below in Table 2.1.

Table 2-1 KEY ENVIRONMENTAL ISSUES PER SEA TOPIC

SEA topic	Key environmental issues
Biodiversity, Flora and Fauna	<ul style="list-style-type: none"> • The opportunity exists to link in and strengthen ecological corridors and connectivity from the largely urbanised landuse in the variation lands to wider corridors such as the Grand Canal. • Enhance existing natural environment in and around the plan area • Potential impacts to European and Nationally designated sites • Strengthen the role of nature-based solutions to climate change. • Minimising soil sealing and sustainable use of soil and water resources. • Managing and controlling alien invasive plant and animal species. • Minimising soil sealing and sustainable use of soil and water resources. • Managing and controlling alien invasive plant species
Population and Human health	<ul style="list-style-type: none"> • Housing- social, mix of housing, density- achieving Core Strategy and residential units • Services including childcare • Noise and air emissions associated with the Naas and Kylemore routes primarily. • Placemaking and creation of sense of place • Provision of social and community infrastructure and demographic mix • Providing resilient urban space comprising blue and green infrastructure
Water resources including flooding	<ul style="list-style-type: none"> • Responding and adapting to increasing extreme weather effects and effects on water resources. • Control/avoid introduction of alien and invasive species • Reversing trends in water quality in the plan area, contributing to improving water quality. • Seeking co benefits via Nature based solutions for surface water run off
Air Quality and Climate	<ul style="list-style-type: none"> • Reducing transport related GHG emissions via modal shifts to alternative transport options • Implementation of Dublin Climate Action Plan 2024 via measures at plan level • Addressing impacts of climate change and ensuring where possible mitigation to climate change impacts are designed to provide co benefits via nature based solutions.
Soil and Geology	<ul style="list-style-type: none"> • Reuse of brownfield sites • Reuse of materials where possible via circular economy approaches to construction • Consideration of historical land use and possible local soil contamination
Landscape and townscape	<ul style="list-style-type: none"> • Public realm and advice on canal frontage, hard and soft landscape • Placemaking and creation of sense of place

SEA topic	Key environmental issues
Cultural Heritage	<ul style="list-style-type: none"> • Protection and enhancement of built heritage • Recognising relationship between natural and cultural heritage • Promotion of heritage features.
Material Assets	<ul style="list-style-type: none"> • Provision of a permeable pedestrian and cycling network within the plan area which links residential areas, village centre, schools, community facilities, green network and public transport facilities. • Environmental protection will be integral, with the avoidance of potential pollution at source and reduction of environmental risks to the receiving environment • Encouraging sustainable use of resources. • Energy efficiency across material assets and infrastructure

2.10 Evolution of the environment in the absence of the plan

The table below presents a summary of how environmental topics included in the SEA ER would evolve in the absence of the plan implementation, see Table 2.2.

Table 2-2 Evolution of the Environment without the Proposed Variation

SEA topic	Evolution of same
Biodiversity, Flora and Fauna	Flora and fauna, habitats and ecological connectivity would be protected under existing provisions at legal and policy level. The South Dublin CDP 2022-2028 remains the primary statutory land use framework for the county, specific measures identified to support green and blue infrastructure plus modal shifts with localised improvements in noise and emissions may not be realised; as well as specific measures for longer term actions.
Population, Human health	As many of the actions are cross cutting for example improved permeability, public realm, community, residential and mixed use; the benefits that could accrue under this topic for potential improved environmental quality may not be realised. In combination, effects relating to human health and air quality, water quality and climate change would not be fully availed of.
Air Quality and Climate	In the absence of the Proposed Variation, existing legal and policy commitments will apply however, there would be fewer opportunities at scale to support transport-based actions to address climate change and to embed climate change adaptation measures through the plan area. Air quality from transport is an issue within the Proposed Variation lands and measures to help address this via green infrastructure and modal shifts would not be realised.
Water Resources including flood risk	Statutory and legal provisions would remain through the Water Framework Directive and South Dublin CDP 2022-2028. The Proposed Variation includes measures to enhance existing water resources and provide for co benefits for water quality and landscape, biodiversity and human health including linear park proposals and re naturalisation of the River Camac.
Soil and Geology	Legislation relating to soil and geology related activities would apply.
Material Assets	Existing objectives that relate to this parameter would apply. The current legislation which provides for the protection and enhancement of the water resources and quality at the European, National, Regional and County level will protect and maintain existing water bodies in the Plan area. Many of the measures in the plan are identified with a view to supporting and facilitating behavioural and modal change in transport. This may not be advanced in such a holistic manner in the absence of the Proposed Variation.

SEA topic	Evolution of same
Landscape and townscape	Existing objectives that relate to this parameter would apply. The opportunity for quality place making and public realm detailed in the Proposed Variation would not apply and this could remove the opportunity for a cohesive and planned approach to the lands associated with the Proposed Variation.
Cultural Heritage	Legislation and guidance from international and national level afford both the architectural and archaeological elements a high level of protection. As above for Landscape, the potential for wider benefits around place making and setting of existing cultural heritage features may not be fully realised.

2.11 Inter-relationships

The SEA Directive requires that the interrelationship between the SEA environmental topics must be considered. All SEA topics interact with each other to an extent. However, significant interactions are presented below in Table 2.3 at strategic scale.

Table 2-3: Inter relationships

BFF	•	•	•	•	•	•		•
PHH	•	•	•		•	•	•	•
W	•	•	•	•	•	•		•
G & S	•	•	•		•	•		•
AQ C	•	•	•		•	•	•	•
L	•	•	•		•	•		•
CH	•	•	•		•	•		•
MA	•	•	•	•	•	•	•	•
	BFF	PHH	W	G&S	AQ C	L	CH	MA

3 Consideration of Alternatives

The SEA legislation requires that alternatives are considered as follows within the Environmental Report:

- Reasonable alternatives taking into account the objectives and the geographical scope of the plan or programme;
- The alternatives are identified, described and evaluated;
- An outline of the reasons for selecting the alternatives dealt with;
- A description of how the assessment was undertaken including any difficulties (such as technical deficiencies or lack of know-how encountered in compiling the required information).

Preferred Alternative identified for the South Dublin CDP 2022-2028

During the preparation of the South Dublin CDP 2022 -2028 the SEA evaluated a number of different alternatives; the preferred strategic alternative for the approach to the Development Plan was Alternative 1: Growth focused on Identified Growth Centres. This is based on the following:

- Consistent with the requirements of the National Planning Framework and Regional Spatial and Economic Strategy;
- Supports the existing urban centre;
- Maintains and enhances all existing development, within a connected city context;
- Prioritises growth in strategic well-serviced areas capable of delivering appropriate and sustainable development; and
- Promotes smarter travel policies, reduction in commuting, with increased walking and cycling.

Thereafter, through the development of the City Edge Strategic Framework a number of alternatives (scenarios) were explored. These are evaluated through the SEA ER report in Chapter 6 but the emerging preferred scenario related to refinement of City Edge Options. A change in focus and planning policy has taken place between 2023 and 2025 and this has resulted in the City Edge Project identifying Priority Development Areas to advance and highlight key lands, to prioritise for development over the lifetime of existing City/County Development Plans.

Chapter 6 of the SEA ER presents the evaluation of the various alternative scenarios against those criteria presented in Table 1.1 above.

The preferred alternative has been refined and the alternative that forms the basis for the approach to the Proposed Variation, Priority Development Areas on a statutory basis was selected for the following reasons:

- . A number of factors were considered and applied in identifying these PDAs as follows:
 - Public transport accessibility, both existing and planned
 - Proximity to existing and planned facilities including open space and community infrastructure

- Planning and development context (e.g. recent or imminent development including current planning permissions)
- Constraints such as Seveso sites, overhead high voltage lines, and flood risk.

The Three PDAs were identified are: Greenhills, Red Cow & and Cherry Orchard , and Long Mile.

4 Summary of significant environmental effects of Proposed Variation

Table 4.1 below summarises the significant environmental effects across each section of the Proposed Variation. Further detail is provided in Section 7 of the SEA ER.

Table 4-1 Summary of significant environmental effects

Section	Summary
2.2. Strategic Infrastructure objectives and critical land	The policy and associated objectives are aimed at ensuring phased, managed and service led delivery of the Proposed Variation. These generate positive direct effects on a number of SEOs including direct positive effects on population and human health, air quality and noise, climate change and material assets. Indirect positive effects are identified for climate change (through reducing private transport); blue and green infrastructure (through its integration to the overall scheme) and overall placemaking. Where project level potential impacts are identified ie for BFF SEOs and Water SEOs in particular, these are likely to be mitigated through project level assessment and application of relevant policies of the South Dublin CDP 2022-2028
2.4.5 Priority Development Areas - Policies and Objectives	<i>Positive impacts across the SEOs in particular Population and Human health, with human health a key consideration to avoid impacts in PDA 2 Objective 3 that avoids adverse effects arising from increased noise or air emissions or traffic impacts.</i> <i>At strategic scale, these lands are largely built land and artificial surfaces, no adverse effects identified and consistency across all Sea topics are identified.</i>
2.4.6 Land Assembly	<i>This policy and objectives seek to ensure that land assembly where undertaken is co-ordinated and consistent with the SURF and requirements of the PDAs. At strategic scale, this is consistent with Population and Human health and Material Assets directly to ensure high quality development and avoidance of conflicting or piecemeal, incoherent development activities. For other SEOs, at project level, existing environmental protection measures of the South Dublin CDP will apply.</i>
2.5 MOVEMENT	The policy and objectives relating to active travel, public transport, mobility hubs etc are positive across all SEOs with direct, long term positive effects on Material Assets, Climate Change, Population and Human health, Air and Noise in particular. A core tenet of the City Edge and this Proposed Variation relate to integrated landuse and transport, modal shifts and 10 min settlement concept. Achieving significant active travel measures via provision of safe, quality walking and cycling routes is essential to achieving this and aiming to reduce GHG emissions from transport. Aligned with this is co benefits for improved local air quality and reduce emissions from private transport. Where at project scale impacts are identified, potentially with Biodiversity, Flora and Fauna in particular, existing provisions in the South Dublin CDP will apply (eg: Policy NCBH1 Overarching and Policy NCBH5: Protection of Habitats and Species Outside of Designated Areas) and provide appropriate project level mitigation.
2.6 INTENSITY OF DEVELOPMENT	<i>Plot ratio and building height policy and objectives have been carefully developed and articulated in the proposed variation (SURF). The achievement of such standards and ranges are positive in terms of Population and Human health, Landscape, Cultural heritage directly through quality design and higher densities. This provides a more efficient use of land zoned as Regeneration and</i>

Section	Summary
	<i>links more efficient transport provision and services with the requirements of the population over time. As such, this also contributes to consistency with Material Assets and Climate Change indirectly and directly.</i>
2.7 Mixed use Development	<i>Support for mixed use proposals across the three PDAs are key to achieving objectives of City Edge area , that integrates transport and landuse, facilitates short travel times for living and working, accessing services etc and provides for lively, high quality placemaking. These measures directly support a mixed, lively space that serves the local community. Local access to services enhances local transport options that are not car dependant and overall improves permeability, passive surveillance, with indirect positive impacts across other SEOs including landscape.</i>
2.8 Housing	<i>This housing policy and objectives directly support community and residential and community land uses and seek to support a mixed, lively space that serves the local community. The reuse of existing built and land and artificial surfaces/brownfield lands are positive in terms of interactions across Soil and Geology and indirectly Water, Biodiversity. Objective HOU1 6 supports protection of amenity of existing residential development which is important in terms of a coordinated approach and stitching older and newer housing activities together - this also improves consistency with the Population and Human health. Policy GI3: Sustainable Water Management and other existing environmental protection measures and requirements of Chapter 12 of the South Dublin CDP will apply as appropriate at project level.</i>
2.9 Schools, Community, Culture and Arts Facilities	<i>This policy and objectives address education, community, arts and culture within the PDAs. The provision of such landuse activities and facilities support communities and placemaking. Positive direct and indirect interactions for Population and Human health and Cultural heritage. The alignment of new schools with safe walking, cycling and public transport is essential for human health, reducing local air quality impacts from local traffic at peak school times and reducing transport related GHG emissions. Positive interactions are also identified for Climate Change, Air Quality and Material Assets.</i>
2.10 Local Centres and Retail	<i>This policy and objectives address local centres and retail. This is important to achieve transport led development, proximity to public transport and walking/cycling opportunities and alignment with 10 minute city principles, where services including retail and other public services, entertainment are provided within local, nearby locations. culture and the arts within the PDAS. The provision of such landuse activities and facilities support communities and placemaking. Positive direct and indirect interactions for Population and Human health.</i>
2.11 Employment	<i>This policy and objectives address employment. This reflects both existing employment and economic activity within the City Edge area and the need to provide and ensure local employment activities and opportunities remain within the area. EMP1 Objectives 5 and 6 recognise more industrial land uses in the EE and Regen in the City Edge area and provides for buffers, and avoidance of adverse effects arising from potential air, and noise emissions. This is further aligned with the requirements of Chapter 12 of the South Dublin CDP 2022 -2028. <i>The provision of such landuse activities and facilities support local economic activities and integrating mixed residential use with employment. Positive direct and indirect interactions for Population and Human Health. Positive</i></i>

Section	Summary
	<p>interactions are also identified for Climate Change, Air Quality and Material Assets. As with previous policies and objectives, existing measures in the South Dublin CDP will provide appropriate, and robust project level mitigation.</p>
<p>2.12 Natural Infrastructure and Open Space</p>	<p>The provisions relating to open space hierarchy, green network included Grand Canal and River Camac parks. Policy NIOS1: Natural Infrastructure and Open Space is positive across all SEOs with detailed mitigation to ensure robust ecological assessment and enhancement of biodiversity reflected in this policy and associated measures in the South Dublin CDP 2022 -2028 including:</p> <p>The integration of the measures relating to the County Green and Blue infrastructure network is important for provide for robust buffers, avoidance of areas of high ecological sensitivity and improvement of areas of lower sensitivity whilst facilitating human presence and recreation in appropriate areas. Measures from the South Dublin CDP of particularly relevance include:</p> <ul style="list-style-type: none"> • Policy GI1:Overarching: Protect, enhance and further develop a multifunctional GI network, using an ecosystem services approach, protecting, enhancing and further developing the identified interconnected network of parks, open spaces, natural features, protected areas, and rivers and streams that provide a shared space for amenity and recreation, biodiversity protection, water quality, flood management and adaptation to climate change. <p>Design of such proposals should be informed by ecological assessment and reflect best practice, consideration of potential impacts including disturbance, invasive species and artificial light are covered by existing policy provisions in the South Dublin CDP 2022 -2028.</p> <p>Positive interactions for SEOs including Population and Human health, where co benefits are provided via nature based solutions in open space, positive interactions with Climate Change and Water are also identified. By encouraging more broadly pedestrian, cycling and public transport measures this directly contributes to reductions in transport related emissions as well as lower emissions of particulate matter. The green space, landscape measures should also once established provide habitat that can assist in buffering and screening for noise and air emissions over time.</p>
<p>2.13 Sports and Recreation</p>	<p>The provisions relating to sport facilities and where possible adjacent to school sites represents efficient landuse and can assist in public transport measures and encouragement of walking/cycling. Positive interactions across Population and Human Health, Material Assets and Climate Change amongst others. Measures from the South Dublin CDP relating to lighting at night will apply as appropriate and other measures will provide project level mitigation</p>
<p>2.14 Surface Water / Rainwater Management</p>	<p>Surface water management policy and objectives positively interact across all topics other than cultural heritage.. Improvements to surface water management via SuDS and the rainwater management plan preparation are positive to address potential surface water run off across much of the built land and artificial surfaces present in the City Edge area. Co benefits and synergistic impacts are positive also.</p>
<p>2.15 Flood Risk Management</p>	<p>Flood risk management and re naturalisation of the River Camac should provide co benefits and positive interactions across SEOs. The Cama River is one of the most modified rivers and will benefit from re naturalisation approaches which should be informed by ecological survey and assessment. Potential cultural heritage may arise in terms of historical activities and built heritage associated with industrial heritage on the River.</p>

Section	Summary
2.16 Natural and Built Heritage	<p>The provisions relating to the Grand Canal pNHA are positive across all SEOs. NBH2 Objective 4 includes EclA requirements to all watercourses across the plan area.</p> <p>The integration of the measures relating to the County Green and Blue infrastructure network is important for provide for robust buffers, avoidance of areas of high ecological sensitivity and improvement of areas of lower sensitivity whilst facilitating human presence and recreation in appropriate areas. Measures from the South Dublin CDP of particularly relevance include:</p> <ul style="list-style-type: none"> • Policy NCBH8: Dodder River Valley Protect and enhance the visual, recreational, environmental, ecological, geological and amenity value of the Dodder Valley, as a key element of the County's Green Infrastructure network. • Policy NCBH9: Grand Canal Protect and promote the Grand Canal as a key component of the County's Green Infrastructure and ecosystem services network, and protect and enhance the visual, recreational, environmental, ecological, industrial heritage and amenity value of the Grand Canal, recognising its sensitivities as a proposed Natural Heritage Area with adjacent wetlands and associated habitats. • Policy GI1: Overarching: Protect, enhance and further develop a multifunctional GI network, using an ecosystem services approach, protecting, enhancing and further developing the identified interconnected network of parks, open spaces, natural features, protected areas, and rivers and streams that provide a shared space for amenity and recreation, biodiversity protection, water quality, flood management and adaptation to climate change. <p>Design of such proposals should be informed by ecological assessment and reflect best practice, consideration of potential impacts including disturbance, invasive species and artificial light are covered by existing policy provisions in the South Dublin CDP 2022 -2028</p>
2.17 Re-Purposing of Existing Buildings and Adaptability of New Buildings	<p>Reuse of existing buildings are important to address embedded carbon and avoid new material for construction with positive interactions on soil and geology. In the case of City Edge these buildings could be creatively repurposed and can be located in areas close to public transport options.</p>
2.18 Energy	<p>Positive interactions in contributing to Climate Action targets in the South Dublin climate action plan and national emissions reductions. Lower energy and renewable energy provide for lower air and noise emissions with positive Air Quality and Noise interactions, plus Population and Human health. At scale this could provide significant positive effects across these parameters.</p>
2.19 Utilities	<p>provision of infrastructure including water supply, wastewater, energy are essential to allow for phased delivery of the City Edge proposals.</p>
2.10 High Voltage Power Lines	<p>Support for undergrounding of Overhead Lines is positive for Population and Human health, Landscape and cultural heritage in particular. HVL1 Objective 5 recognises the potential habitats associated with lands underneath existing High Voltage Overhead lines, there may also be attraction/avoidance behaviour by wildlife for the existing lines.</p>
2.21 Seveso Sites	<p>Seveso sites and planning guidelines will apply as appropriate, and this measure provides for positive interactions with Population and Human health.</p>
2.22 Climate Action	<p>Climate resilience fundamentally underpins the vision and strategic objectives of the City Edge Strategic Framework, 2022. This SURF transposes the vision and objectives to a finer level of detail and a shorter timeframe that continues to have climate resilience as a core focus as follows:</p> <ul style="list-style-type: none"> • City Edge will be a compact settlement on regenerated brownfield land making better use of land in close proximity to Dublin City Centre.

Section	Summary
	<ul style="list-style-type: none"> • <i>City Edge will be a transport-oriented development where the PDAs have been selected and the layouts of the PDAs have been designed around active travel and public transport, giving priority to sustainable movement.</i> • <i>City Edge has been designed along 10-minute city principles meaning that daily services, facilities and amenities will be within a short walk or cycle while higher order services will be accessible via public transport.</i> • <i>The starting point for the design of City Edge was the existing network of blue and green infrastructure including the Canal, the River Camac and its tributaries, Lansdowne Valley Park and Walkinstown Park.</i> • <i>City Edge will have significant green cover including major parks, community parks, greenways, green corridors, SuDS features, street trees, and open space within developments.</i> • <i>The design of City Edge is based on sponge city principles with a high level of green cover, permeable surfaces, interlinked green spaces and corridors and SuDS features.</i> <p><i>The regeneration of City Edge will encourage, and support and facilitate the development of district heating schemes and other low and zero carbon energy projects. As stated above, via design of City Edge and PDAs, the integration of climate change action, and mitigation is integral to the Proposed Variation and is a cross cutting integrated approach via public transport, renewable energy, energy efficiency, surface water approaches and green and blue infrastructure provisions.</i></p>

Cumulative impacts are discussed in the SEA ER and include interactions with other plans. A summary of these is provided below.

The Proposed Variation provides for measures which aims to increase residential, employment and retail use in a mixed use setting over lands already zoned for regeneration under the South Dublin CDP 2022 -2028. If incorrectly managed, these could contribute to cumulative effects through construction phases including dust, noise emissions interacting with other plans and programmes.

The Proposed Variation supports transport orientated development and seeks to maximise public transport options across the Proposed Variation lands. This should interact positively with higher level plans such as National Transport Authority Statement of Strategy 2025 to further support sustainable and safe transport options generating positive effects relating to population and human health, in addition to reductions in transport related GHG and local benefits on air and noise emissions from transport.

A range of positive cumulative effects are identified for the Proposed Variation in terms of increasing green and blue infrastructure, contributing to energy efficiency and GHG emission reduction, improvements to water quality via surface water measures and management. The variety of positive biodiversity related measures defined in the Proposed Variation have the potential to generate a cumulative positive effect on biodiversity - in combination with biodiversity policy measures defined in other plans, including the County Biodiversity Action Plan 2021-2026 and the 4th National Biodiversity Action Plan 2023-2030.

The variety of measures defined in the Proposed Variation that may benefit climate (e.g., blue and green infrastructure, SuDS measures, compact settlements, transport oriented development, active travel measures and delivery of sustainable housing and employment) have the potential to generate a cumulative positive effect on climate - in combination with climate policy measures defined in other plans, including the South Dublin Climate Action Plan 2024 -2029 and the National Climate Action Plan 2025.

Other higher-level plans and in particular proposed transport projects have also been considered for potential cumulative impacts

5 Mitigation measures

Many impacts will be more adequately identified and mitigated at project and EIA level. In general terms, all proposals for development will be required to have due regard to environmental considerations outlined in this Environmental Report and associated assessments including the Screening for Appropriate Assessment/Natura Impact Report.

Proposals for development which are deemed contrary to the environmental objectives contained in the South Dublin County Development Plan 2022 -2028 will not normally be permitted, and if permitted, not without the appropriate site and development specific mitigation measures.

No specific mitigation measures to the Proposed Variation have been identified through the SEA and AA process. This is due to the strategic approach to the City Edge Framework and subsequent PDAs, the reflection that much of the Proposed Variation lands comprise built land and artificial surfaces. Positive environmental effects are identified with the Proposed Variations and the provisions relating to climate action, green and blue infrastructure, protection of riparian buffers and the Grand Canal corridor and consistency with the strategic objectives of the City Edge Framework outlined in Section 1.2 to 1.3 of this report.

Table 5.1 below presents the key relevant environmental protection measures in the South Dublin CDP 2022 -2028, which combined with the Proposed Variation measures evaluated under Chapter Seven of this report, will subject to full implementation and compliance, provide robust environmental protection at strategic scale.

Table 5-1 Key Environmental protection measures in the South Dublin CDP 2022 -2028

SEA topic	Policy	Text
Climate Change	Policy CA1: Climate Action (CA)	To support the implementation of International and National objectives on climate action including the Climate Action and Low Carbon Development Acts (and any amending legislation), the 'Climate Action Plan 2021' (and any updated Plans) and ensure that South Dublin's Climate Change Action Plan and County Development Plan are aligned.
Biodiversity Flora and Fauna	Policy NCBH1: Overarching	Protect, conserve and enhance the County's natural, cultural and built heritage, supporting its sensitive integration into the development of the County for the benefit of present and future generations
Biodiversity Flora and Fauna	Policy NCBH2: Biodiversity	Protect, conserve, and enhance the County's biodiversity and ecological connectivity having regard to national and EU legislation and Strategies.
Biodiversity Flora and Fauna	Policy NCBH3: Natura 2000 Sites	Conserve and protect Natura 2000 Sites and achieve and maintain favourable conservation status for habitats and species that are considered to be at risk through the protection of the Natura 2000 network from any plans or projects that are likely to have a

SEA topic	Policy	Text
		significant effect on their coherence or integrity.
Biodiversity Flora and Fauna	Policy NCBH4: Proposed Natural Heritage Areas	Protect the ecological, visual, recreational, environmental and amenity value of the County's proposed Natural Heritage Areas and associated habitats and species.
Biodiversity Flora and Fauna	Policy NCBH5: Protection of Habitats and Species Outside of Designated Areas	Protect and promote the conservation of biodiversity outside of designated areas and ensure that species and habitats that are protected under the Wildlife Acts 1976 to 2018, the Birds Directive 1979 and the Habitats Directive 1992, the Flora (Protection) Order 2015, and wildlife corridors are adequately protected.
Biodiversity Flora and Fauna Landscape Cultural Heritage	Policy NCBH6: Dublin Mountain	Protect and enhance the visual, environmental, ecological, geological, archaeological, recreational and amenity value of the Dublin Mountains, as a key element of the County's Green Infrastructure network.
Biodiversity Flora and Fauna Landscape Cultural Heritage Water	Policy NCBH8: Dodder River Valley	Protect and enhance the visual, recreational, environmental, ecological, geological and amenity value of the Dodder Valley, as a key element of the County's Green Infrastructure network.
Biodiversity Flora and Fauna Landscape Cultural Heritage Water	Policy NCBH9: Grand Canal	Protect and promote the Grand Canal as a key component of the County's Green Infrastructure and ecosystem services network, and protect and enhance the visual, recreational, environmental, ecological, industrial heritage and amenity value of the Grand Canal, recognising its sensitivities as a proposed Natural Heritage Area with adjacent wetlands and associated habitats
Biodiversity Flora and Fauna Heritage	Policy NCBH10: Invasive Species	Protect against and prevent the introduction and spread of invasive species within the County and require landowners and developers to adhere to best practice guidance in relation to the control of invasive species.
Cultural Heritage Landscape Population and Human health	Policy NCBH13: Archaeological Heritage	Manage development in a manner that protects and conserves the Archaeological Heritage of the County and avoids adverse impacts on sites, monuments, features or objects of significant historical or archaeological interest.
Cultural Heritage Landscape Population and Human health	Policy NCBH14: Landscapes	Preserve and enhance the character of the County's landscapes, particularly areas that have been deemed to have a medium to high Landscape Value or medium to high Landscape Sensitivity and to ensure that

SEA topic	Policy	Text
		landscape considerations are an important factor in the management of development.

6 SEA Monitoring Table

Table 6.1 presents the monitoring table as provided for in the SEA ER of the South Dublin CDP 2022 -2022, this will be applied through the Proposed Variation.

Strategic Environmental Objectives (SEOs) from the South Dublin County Development Plan 2022-2028	Targets	Indicators	Data sources
<p>Biodiversity (Flora & Fauna) (B)</p> <p>(B_1) Preserve, protect, maintain and where appropriate, restore the terrestrial, aquatic and soil biodiversity, of international, EU and nationally designated sites, protected species and habitats.</p> <hr/> <p>(B_2) Ensure no adverse effects on the integrity of any European site, regarding its qualifying interests, associated conservation status, structure and function.</p> <hr/> <p>(B_3) Maintain and where appropriate, enhance the biodiversity value of local designated and non-designated ecological and</p>	<p>Preparation and implementation of a Green Infrastructure strategy for the county.</p> <ul style="list-style-type: none"> • Preparation and implementation of actions in the SDCC Biodiversity Action Plan. • Implementation of actions in the SDCC Pollinator Plan. • That biodiversity is integrated into all decision making across the Plan. • Submission of Screening Report or Natura Impact Statement for proposed developments with planning applications in / and / or near European Sites. • No loss of protected habitats and species during the lifetime of the Plan. • Prevent the introduction or spread of invasive or alien species. 	<p>Number of actions implemented in the SDCC Green Infrastructure strategy.</p> <ul style="list-style-type: none"> • Number of actions implemented in the SDCC Biodiversity Action Plan. • Number of actions implemented in the SDCC Pollinator Plan. • Number of spatial plans that have included ecosystem services content, mapping and policy to protect ecosystem services when their relevant plans are either revised or drafted. • The findings from SEA and AA (as relevant) for policies, plans, programmes etc. 	<p>National Biodiversity and Pollinator Plans, SDCC Biodiversity and Pollinator Plans. All Ireland Pollinator Plan, GI monitoring including 'greening factor'.</p> <ul style="list-style-type: none"> • Planning Data (APAS) reviews. • Internal monitoring of preparation of local land use plans. • Internal monitoring of likely significant environmental effects of grants of permission (grant by grant).

Strategic Environmental Objectives (SEOs) from the South Dublin County Development Plan 2022-2028	Targets	Indicators	Data sources
<p>heritage areas, which function as stepping stones for migration, dispersal and genetic exchange of wild species.</p> <hr/> <p>(B_4) Enhance biodiversity in line with the National Biodiversity Strategy and its targets.</p>		<ul style="list-style-type: none"> • Designation of additional areas due to biodiversity and / or geological value. • Number / percentage of developments in / near Natura 2000 network. • Percentage of unique habitats and species lost in designated sites through trending of annual surveys • Number, type and location of invasive species identified. 	<ul style="list-style-type: none"> • Department of Culture, Heritage and the Gaeltacht report of the implementation of the measures contained in the Habitats Directive - as required by Article 17 of the Directive (every 6 years). • Department of Culture, Heritage and the Gaeltacht National Monitoring Report for the Birds Directive under Article 12 (every 3 years). • Consultations and referrals to the NPWS other relevant prescribed bodies
<p>Population & Human Health (PHH)</p>	<p>(PHH_1) Promote economic growth to encourage retention of working age population and funding of sustainable development</p>	<ul style="list-style-type: none"> • Development within the residential and employment growth areas identified in the MASP. 	<ul style="list-style-type: none"> • Number / percentage of units delivered within overall settlements.

Strategic Environmental Objectives (SEOs) from the South Dublin County Development Plan 2022-2028	Targets	Indicators	Data sources
<p>and environmental protection.</p> <hr/> <p>(PHH_2) Provide high quality residential, community, working and recreational environments with access to sustainable transport options.</p> <hr/> <p>(PHH_3) Ensure that existing population and planned growth is linked with the required infrastructure and the services</p> <hr/> <p>(PHH_4) Protect human health and well-being from environment-related pressures.</p>	<ul style="list-style-type: none"> • Progress on implementation of extant planning permissions, delivery rate of units per neighbourhood within the overall settlement. • Lands for Employment monitor uptake of employment lands using land capacity study baseline. • Number of sites added and or removed from the 'Vacant Sites Register'. • Progression of works forming part of the Parks & Open Space Strategy • Progression of roll out of Teen Space Programme 2021 and Sports Pitch Strategy. • Improved trends in quality of life related to these matters. • No significant deterioration in human health as a result of environmental factors. • Implementation of Cycle South Dublin Programme implementation of permeability projects arising from Sustainable Movement Studies; achievement of County Mode Split Targets for Walking and Cycling; number of schools participating in School Streets and Green Schools initiatives. 	<ul style="list-style-type: none"> • Implementation of Plan measures relating to the promotion of economic growth and employment. • Number of buildings listed on 2020 vacant and derelict site registers now in use. • Number of actions implemented in the Parks & Open Space Strategy / Sports Pitch Strategy. • Any occurrence of spatially concentrated deterioration in human health. • Number / area of green spaces and amenities available to the public 	<ul style="list-style-type: none"> • SDCC Planning Data (APAS) and BCMS. • Review of Strategy Implementation. • Implementing requirements of Corporate Plan / LECP. • POWSCAR12 data from next census, review of Council programmes. • SDCC Vacant Sites Register. • Consultations with the Health Service Executive and EPA. • CSO data. • Internal monitoring of preparation of local land use plans. • An Taisce Green Schools Programme, Roads Section.

Strategic Environmental Objectives (SEOs) from the South Dublin County Development Plan 2022-2028	Targets	Indicators	Data sources	
Soils & Geology (SG)	<p>(SG_1) Safeguard sensitive soil, resources and geological heritage sites against pollution and degradation.</p> <p>(SG_2) Promote the sustainable use of infill and brownfield sites over the use of greenfield within the city.</p> <p>(SG_3) Safeguard designated geological sites</p>	<ul style="list-style-type: none"> • Reduce the use of greenfield land by encouraging the reuse of brownfield sites. • Achieve the 40% target for growth on infill as per NPF. • Ensure sustainable extraction of non-renewable sand, gravel and rock deposits and the reuse and recycling of construction and demolition waste. • No incidences of soil contamination 	<ul style="list-style-type: none"> • Number / percentage of new developments on brownfield sites. • Percentage of brownfield land developed over the Plan period. • Percentage of total greenfield land developed. • Volume of contaminated material generated from brownfield and infill. • Volume of construction and demolition waste recycled, in comparison with previous year/s. • Excessive land-filling of quality soils. • Incidences of soil contamination. 	<ul style="list-style-type: none"> • Environmental Protection Agency (EPA), Geoportal. • Internal monitoring of likely significant environmental effects of grants of permission (grant by grant)
Water Quality (W)	<p>(W_1) Protect and where necessary improve and maintain water quality and the management of watercourses and groundwater and coastal waters in compliance with the requirements of the Water Framework Directive</p>	<ul style="list-style-type: none"> • All waters within the Plan area to achieve the requirements of the WFD and the relevant River Basin Management Plan by 2027. • Surface and groundwater - Number of permissions for new developments which include and on-site wastewater treatment facilities. 	<ul style="list-style-type: none"> • The status of water quality in the county's waterbodies and the proportion of 'good' and 'high' status waterbodies above 2020 baseline. • Number of households served by urban wastewater 	<ul style="list-style-type: none"> • EPA Monitoring Programme for WFD compliance. • EPA Remedial action list. • Internal monitoring of likely significant environmental

Strategic Environmental Objectives (SEOs) from the South Dublin County Development Plan 2022-2028	Targets	Indicators	Data sources
<p>and Marine Strategy Framework Directive objectives and measures.</p> <p>(W_2) Avoid inappropriate development in areas at risk of flooding and areas that are vulnerable to current and future erosion.</p> <p>(W_3) Integrate sustainable water management solutions (such as SuDS, porous surfacing and green roofs) into development proposals.</p>	<ul style="list-style-type: none"> • Not to permit development where it would result in a WWTP exceeding the terms of its discharge license. • Encourage future population growth in areas served by urban WWTP and public water supplies. • Sustainable Water Management - compliance of relevant planning applications. • Progression of the flood relief schemes approved in the ten year Programme of Investment in Flood Relief Measures. • Compliance with the Flood Risk Management Guidelines at site and plan level 	<p>treatment plants / septic tanks / individual WWTP or other systems.</p> <ul style="list-style-type: none"> • Number of households served by public water supplies. • Number of developments granted planning permission that incorporate SUDs. • Minimise developments granted permission on lands which pose - or are likely to pose in the future - a significant flood risk. • Completion / progression of approved flood relief scheme 	<p>effects of grants of permission (grant by grant).</p> <ul style="list-style-type: none"> • OPW flood data. SDCC Planning Data (APAS).
<p>Air Quality & Noise (AN)</p> <p>(AN_1) To avoid, prevent or reduce harmful effects on human health and the environment as a whole resulting from emissions to air from all sectors with particular reference to emissions from transport, residential heating and industry.</p>	<ul style="list-style-type: none"> • Provide for increased use of public transport. • Increase number of cycle lanes and pedestrian routes in the plan area. • Improve ambient air quality trends, particularly in relation to transport-related emissions of NOx and particulate matter through reduction of private vehicle usage. 	<ul style="list-style-type: none"> • Uses of public transport. • Number of cycle lanes and pedestrian routes provided in the Plan area. • Air quality indicators. • Percentage compliance with EPA emission limits for sulphur dioxide, nitrogen oxides, volatile organic 	<ul style="list-style-type: none"> • CSO data. • Data from the National Travel Survey. • EPA Air Quality Monitoring & SDCC. • Consultations with Department of

Strategic Environmental Objectives (SEOs) from the South Dublin County Development Plan 2022-2028	Targets	Indicators	Data sources
(AN_2) Minimise travel related emissions and encourage a modal change from car to more sustainable forms of transport.	<ul style="list-style-type: none"> • An increase in the percentage of the population travelling to work or school by public transport or non- mechanical means. • To promote reduced energy consumption and support the uptake of renewable retrofitting of buildings (including heating systems). 	<p>compounds, ammonia and fine particulate matter.</p> <ul style="list-style-type: none"> • Percentage population within the Plan area travelling to work or school by public transport or non mechanical means, above 2016 CSO figures. • Number of grants given for insulation works; energy efficiency of new buildings - energy rating figures. 	<p>Transport Tourism and Sport, Transport Trends and Department of Communication Climate Action and Environment.</p> <ul style="list-style-type: none"> • SDCC Planning Data (APAS). • SDCC Climate Change Team and action tracker. • Review of the Noise Action Plan. • Review standard planning conditions in relation to aerodrome / airport development.
(AN_3) Aim to meet Air Quality Directive standards for the protection of human health - Air Quality Directive.			
(AN_4) Significantly decrease noise emissions associated with traffic and transport and other noise related industry etc.			
<p>Climate Change (CC)</p> <p>(CC_1) Minimise contribution to Climate Change by adopting mitigation and adaptation measures.</p> <p>(CC_2) Integrate sustainable design solutions into the city's infrastructure (e.g.</p>	<ul style="list-style-type: none"> • Implementation of South Dublin Climate Action Plan 2019-2024. • Achieve transition to a competitive, low carbon, climate-resilient and environmentally sustainable economy by 2050. 	<ul style="list-style-type: none"> • Number of actions implemented in the SDCC Climate Action Plan. • Implementation of Plan measures relating to climate reduction targets as provided for by Plan provisions. 	<ul style="list-style-type: none"> • SDCC Climate Change Team and action tracker. • Yearly report on progress presented to Council.

Strategic Environmental Objectives (SEOs) from the South Dublin County Development Plan 2022-2028	Targets	Indicators	Data sources	
<p>energy efficient buildings; green infrastructure).</p> <p>(CC_3) Contribute towards the reduction of greenhouse gas emissions in line with national targets.</p> <p>(CC_4) Encourage and promote development resilient to the effects of climate change.</p> <p>(CC_5) Promote the use of renewable energy, energy efficient development and increased use of public transport.</p>	<ul style="list-style-type: none"> • Increased density and penetration of the public transport network including frequency of service - e.g. for urban and rural bus services. • Increase in the proportion of people resident in the county reporting regular cycling / walking to school and work above 2016 CSO figures. • Decrease in the proportion of journeys made by residents of the county using private fossil fuel-based car compared to 2016 levels. • Contribute towards the target of the Renewable Energy Directive (2009/28/EC), for all Member States to reach a 10% share of renewable energy in transport by 2020. • Contribute towards the target of aggregate reduction in carbon dioxide (CO2) emissions of at least 80% (compared to 1990 levels) by 2050 across the electricity generation, built environment and transport sectors. • To promote reduced energy consumption and support the uptake of renewable options and a move away from solid fuels for residential heating. 	<ul style="list-style-type: none"> • Number of new bus services or routes and new cycle lanes. • Proportion of people reporting regular cycling / walking to school and work above 2016 CSO figures. • Percentage population within the Plan area travelling to work or school by public transport or no mechanical means, above 2016 CSO figures. • A competitive, low-carbon, climate-resilient and environmentally sustainable economy. • Energy consumption, the uptake of renewable options and solid fuels for residential heating. • Number of grants given for insulation works; energy efficiency of new buildings - energy rating figures 	<ul style="list-style-type: none"> • POWSCAR113 data from next census. • EPA Annual National Greenhouse Gas Emissions • Inventory reporting. • Climate Action Regional Office. • Consultations with Department of Communication Climate Action and Environment. • CSO data. 	
Cultural Heritage	(CH_1) Protect places, features, buildings and	<ul style="list-style-type: none"> • No permitted development which involves loss of cultural heritage, including 	<ul style="list-style-type: none"> • Number of developments permitted during the lifetime 	<ul style="list-style-type: none"> • Internal monitoring of likely significant

Strategic Environmental Objectives (SEOs) from the South Dublin County Development Plan 2022-2028	Targets	Indicators	Data sources
<p>(CH) landscapes of cultural, archaeological and / or architectural heritage from impact as a result of development</p>	<p>protected structures, archaeological sites, Architectural Conservations Areas and landscape features.</p> <ul style="list-style-type: none"> • To increase the number of uninhabited and derelict structures that are restored 	<p>of the Plan which will result in the loss or partial loss of protected structures or sites of archaeological status.</p> <ul style="list-style-type: none"> • Number of additions to the list of Protected Structures and Architectural Conservation Areas. • Number of uninhabited and derelict structures that are restored. • Number of planning applications for demolition and redevelopment of vacant and derelict site 	<p>environmental effects of grants of permission (grant by grant).</p> <ul style="list-style-type: none"> • Consultations with Department of Culture, Heritage and the Gaeltacht. • SDCC Planning Data (APAS) & Variation to CDP where necessary. • Protected Structures - Referral of planning applications & S.57 to conservation officers and relevant prescribed bodies. • ACAs - referral of planning applications to conservation officer and relevant prescribed bodies
<p>Landscape & Visual (LV)</p>	<p>(LV_1) Protect and maintain the special qualities of the landscape character of South Dublin County, especially with regard to</p>	<ul style="list-style-type: none"> • Number of developments permitted and their impacts on cultural / historic landscapes. 	<ul style="list-style-type: none"> • Internal monitoring of likely significant environmental effects of grants of

Strategic Environmental Objectives (SEOs) from the South Dublin County Development Plan 2022-2028	Targets	Indicators	Data sources
<p>areas of high amenity - River Liffey, Royal Canal, Grand Canal and coastline.</p>	<ul style="list-style-type: none"> • Compliance with the Landscape Character Assessment and policies across all sections the Plan. • Permissions granted demonstrating compliance with Chapter 13 of the Plan. 	<ul style="list-style-type: none"> • Number of developments located within a high landscape area that disrupt views (based on LCA). 	<p>permission (grant by grant).</p> <ul style="list-style-type: none"> • SDCC Landscape Character Assessment. • SDCC Planning Data (APAS)
<p>Material Assets (MA)</p> <p>(MA_1) Make best use of existing infrastructure, promote the sustainable development of new infrastructure to match population distribution and protect existing assets, to meet the needs of South Dublin County's population.</p> <hr/> <p>(MA_2) Promote the circular economy, reduce waste, and increase energy efficiencies</p> <hr/> <p>(MA_3) Ensure there is adequate sewerage and drainage infrastructure in place to support new development.</p>	<ul style="list-style-type: none"> • Reduction in the quantities of waste sent to landfill. Increase in the quantities of waste sent for recycling. • Waste - Review standard planning conditions in relation to waste management policy • Delivery of strategic water and wastewater infrastructure and improvements to existing water and wastewater infrastructure. • Rail / Bus / Public transport - implementation of public transport improvements; Achievement of County Mode Split Targets for public Transport. • Traffic / Transport - implementation of mobility management plans for large proposals; carrying out of traffic studies. • An increase in provision of cycle lanes and pedestrian routes. 	<ul style="list-style-type: none"> • Percentage of waste going to landfill and recycling when compared with 2020 figures. • Percentage of waste used for energy production when compared with 2020 figures. • Number of critical infrastructural projects identified in the Plan completed. • Number of upgrades to water treatment plants and wastewater treatment plants undertaken within the Plan area. • Number of public transport improvement works / projects. 	<ul style="list-style-type: none"> • SDCC Planning Data (APAS) / Regional Waste Management Plan Reports; Planning conditions reviewed. • Internal monitoring of likely significant environmental effects of grants of permission (grant by grant). • CSO data. • Consultations with Irish Water. • SDCC Planning Data (APAS) and Roads Section. • NTA and TII; POWSCAR114 data

Strategic Environmental Objectives (SEOs) from the South Dublin County Development Plan 2022-2028	Targets	Indicators	Data sources
<p>(MA_4) A reduction in energy demand from the transport sector and support moves to electrification of road and rail transport modes.</p>		<ul style="list-style-type: none"> • Number of new bus services or routes and new cycle lanes. 	<p>from future census data.</p> <ul style="list-style-type: none"> • Department of Housing, Planning and Local Government in conjunction with Local Authorities. • Department of Communications, Climate Action and Environment.

