

GENERAL NOTES

DO NOT SCALE FROM DRAWINGS. WORK TO FIGURED DIMENSIONS ONLY. ARCHITECT TO BE NOTIFIED OF ANY DISCREPANCIES.

THIS DRAWING TO BE READ IN CONJUNCTION WITH ALL ARCHITECT'S DRAWINGS, SPECIFICATIONS CONSULTANTS DESIGN TEAM DRAWINGS AND SPECIFICATIONS.

NOTES:

PLEASE REFER TO XXX CONSULTING ENGINEERS FOR ALL STRUCTURAL DRAWINGS AND DETAILS

PLEASE REFER TO OCSC M+E CONSULTING ENGINEERS DRAWINGS FOR ALL MECHANICAL & ELECTRICAL DETAILS for the following:-

- All proposed Mechanical Ventilation details
- AOV's min clear opening 1.5m² to specialist details
- SVP drop locations & details
- Electrical layout & LFI Services specification
- Fire detection system specification & details throughout
- Escape lighting specification & details & exit signage

IMPORTANT NOTE:
TO BE READ IN CONJUNCTION WITH THE FIRECERT DRAWINGS AND SPECIFICATION.

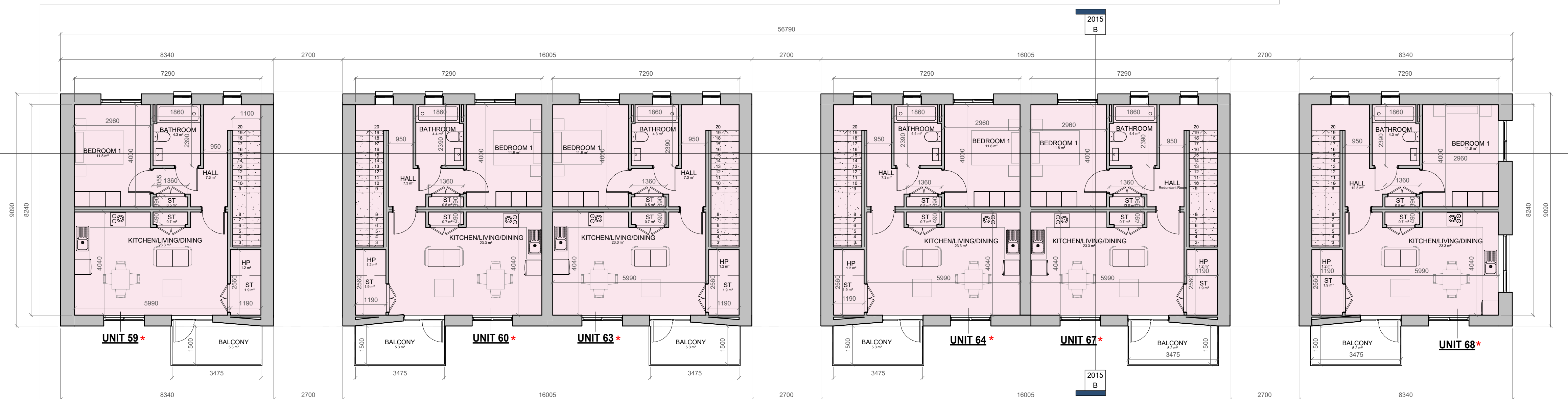
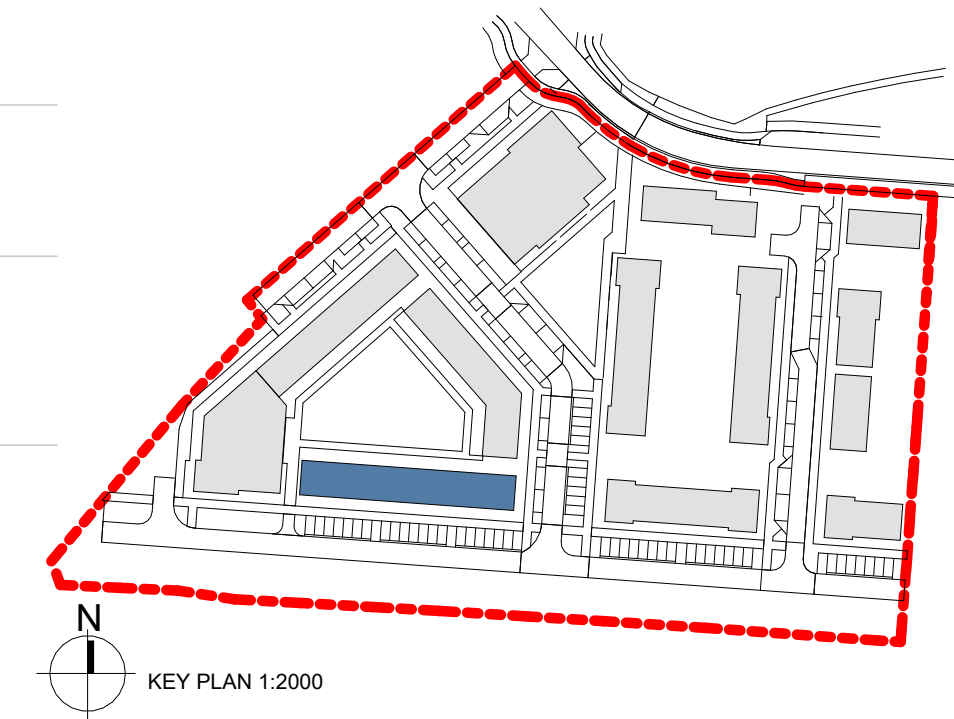
NOTE:

As an alternative to the foregoing, products which satisfy the equivalent European standards in TDG Part B 2022 may be used.

Allow for a 300x300mm access hatch in each apartment for hvir unit maintenance

NOTE 1:
All pipes passing through fire resisting construction to be firestopped.

Please read in conjunction with MCORM detail drawings and specifications.



LEGEND

- * DUAL ASPECT UNIT
- UNIT X UNIT NUMBER
- LEVEL HEIGHT
- ST STORAGE
- OUTLINE OF STRUCTURE ABOVE

AREA TYPE:

1 BED APARTMENT TYPE
A-3B5P_1B2P-1

| REV | DATE | DESCRIPTION | JH |
|-----|------------|-----------------|----|
| A | 28/06/2024 | General Updates | JH |

REVISIONS

FOR PLANNING

CLIENT:
NDFA on behalf of South Dublin County Council

PROJECT TITLE:
Proposed Part 8 Residential Development Kishoge, Lucan

DRAWING TITLE:
DUPLIX TERRACE 3- SECOND
FLOOR PLAN

DRN BY: CHK BY: SCALE @ A1: DATE: REVISION: JOB NO:
JH PMcN 1:100 28/06/2024 A 23004

DRAWING NUMBER: STATUS CODE:
SHB5-CSD-DR-MCORM-AR-P3-1123 P3

MCORM
ARCHITECTURE
AND URBAN DESIGN

No.1 Grantham Street, Dublin 8
D08 A49Y Tel: +353 (0)1 478 8700
Block 6, Central Business Park
Tullamore, County Offaly
R35 FQFB Tel: +353 (0)57 932 3867
website: www.mcorm.com
email: arch@mcorm.com

Figured dimensions only to be used. This drawing is copyright of MCORM Ltd. All information is shared as per approved use in accordance with I.S. RA-2021 to I.S. EN ISO 15650-2: 2018. If 'Status Code' above is empty, this information has been shared as Status Code S0 - Work in Progress (WIP) / Draft.