

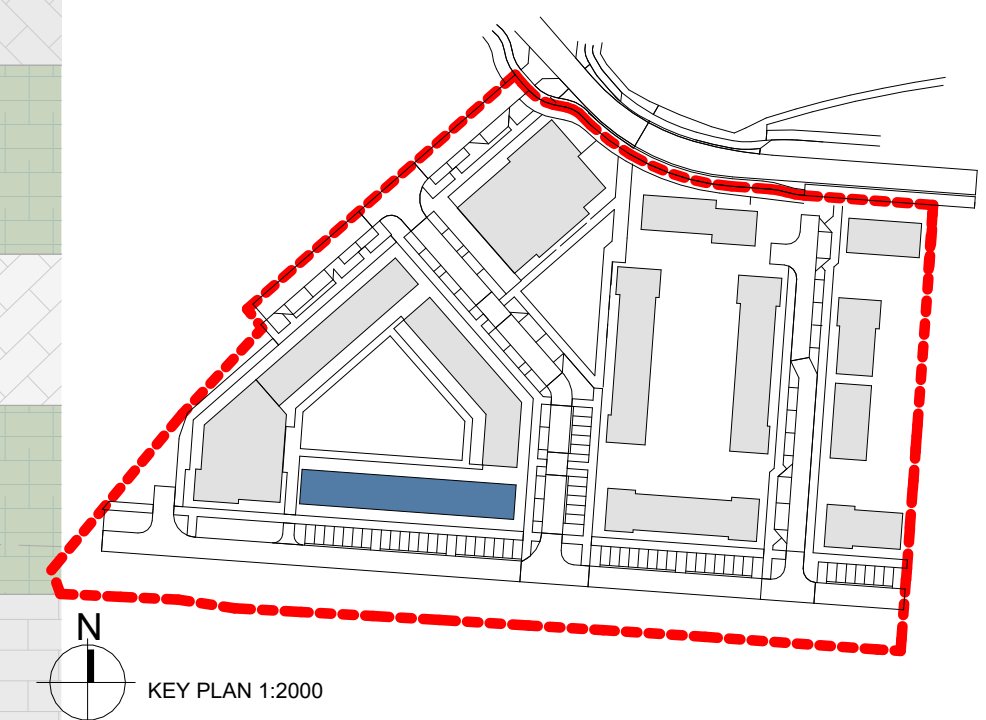
GENERAL NOTES

DO NOT SCALE FROM DRAWINGS. WORK TO FIGURED DIMENSIONS ONLY. ARCHITECT TO BE NOTIFIED OF ANY DISCREPANCIES.

THIS DRAWING TO BE READ IN CONJUNCTION WITH ALL ARCHITECT'S DRAWINGS, SPECIFICATIONS CONSULTANTS DESIGN TEAM DRAWINGS AND SPECIFICATIONS.

NOTES:

- PLEASE REFER TO XXX CONSULTING ENGINEERS FOR ALL STRUCTURAL DRAWINGS AND DETAILS
- PLEASE REFER TO OCS M+E CONSULTING ENGINEERS DRAWINGS FOR ALL MECHANICAL & ELECTRICAL DETAILS for the following:
 - All proposed Mechanical Ventilation details
 - AOV's min clear opening 1.5m² to specialist details
 - SVP drop locations & details
 - Electrical layout & LFI Services specification
 - Fire detection system specification & details throughout
 - Escape lighting specification & details & exit signage
- IMPORTANT NOTE: TO BE READ IN CONJUNCTION WITH THE FIRE CERT DRAWINGS AND SPECIFICATION.
- NOTE: As an alternative to the foregoing, products which satisfy the equivalent European standards in TDG Part B 2022 may be used.
- Allow for a 300x300mm access hatch in each apartment for hv unit maintenance
- NOTE 1: All pipes passing through fire resisting construction to be firestopped.
- Please read in conjunction with MCORM detail drawings and specifications.



KEY PLAN 1:2000

LEGEND	
*	DUAL ASPECT UNIT
UNIT X	UNIT NUMBER
ST	LEVEL HEIGHT
ST	STORAGE
- - -	OUTLINE OF STRUCTURE ABOVE

AREA TYPE:

- BICYCLE STORAGE
- CIRCULATION
- DUPLEX TYPE A -B5P_1B2P_1

REV	DATE	DESCRIPTION	JH
A	28/06/2024	General Updates	JH

FOR PLANNING

CLIENT: NDFA on behalf of South Dublin County Council
 PROJECT TITLE: Proposed Part 8 Residential Development Kishoge, Lucan
 DRAWING TITLE: DUPLEX TERRACE 3- GROUND FLOOR PLAN
 DRN BY: JH | CHK BY: PMcN | SCALE @ A1: 1:100 | DATE: 28/06/2024 | REVISION: A | JOB NO: 23004
 DRAWING NUMBER: SHB5-CSD-DR-MCORM-AR-P3-1121 | STATUS CODE: P3

MCORM
 ARCHITECTURE AND URBAN DESIGN
 No.1 Grantham Street, Dublin 8
 D08 A69Y Tel: +353 (0)1 478 8700
 Block 6, Central Business Park
 Tallamore, County Offaly
 R35 F9F8 Tel: +353 (0)57 932 3867
 website: www.mcorm.com
 email: arch@mcorm.com

