

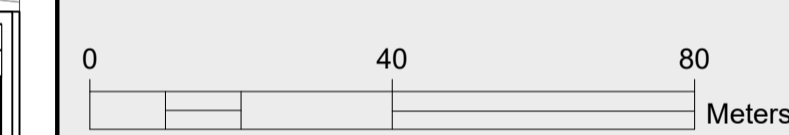


Director:  
**Mick Mulhern**

Senior Engineer:  
**John Hegarty**

- LEGEND:
- Foul Sewer —●— Red
  - Surface Water Sewer —●— Green
  - Watermain —●— Blue
  - Fire Hydrant FH PH SV Sluice Valve
  - Air Valve AV CV Scour Valve
  - Foul Water Under 225mm —●— Grey
  - Surface Water Under 225mm —●— Grey
  - Site Boundary — Red

- Class 1 Open Space
- Roads and Footpaths to be TIC
- Areas to Remain Private/Management Co.
- Wayleaves



Revision	Description	Date

Notes:  
This drawing does not constitute a recommendation to have an estate taken in charge.  
This drawing refers to the taking into charge of the roads and services as indicated in colour.  
All sewers are 225mm dia. unless otherwise indicated.  
Scaled dimensions not to be used.  
Length of roads as on attached road schedule.  
Boundary treatments to roads taken in charge i.e. walls and/or railings are not included in, and are not part of the taking in charge procedure.

Location:

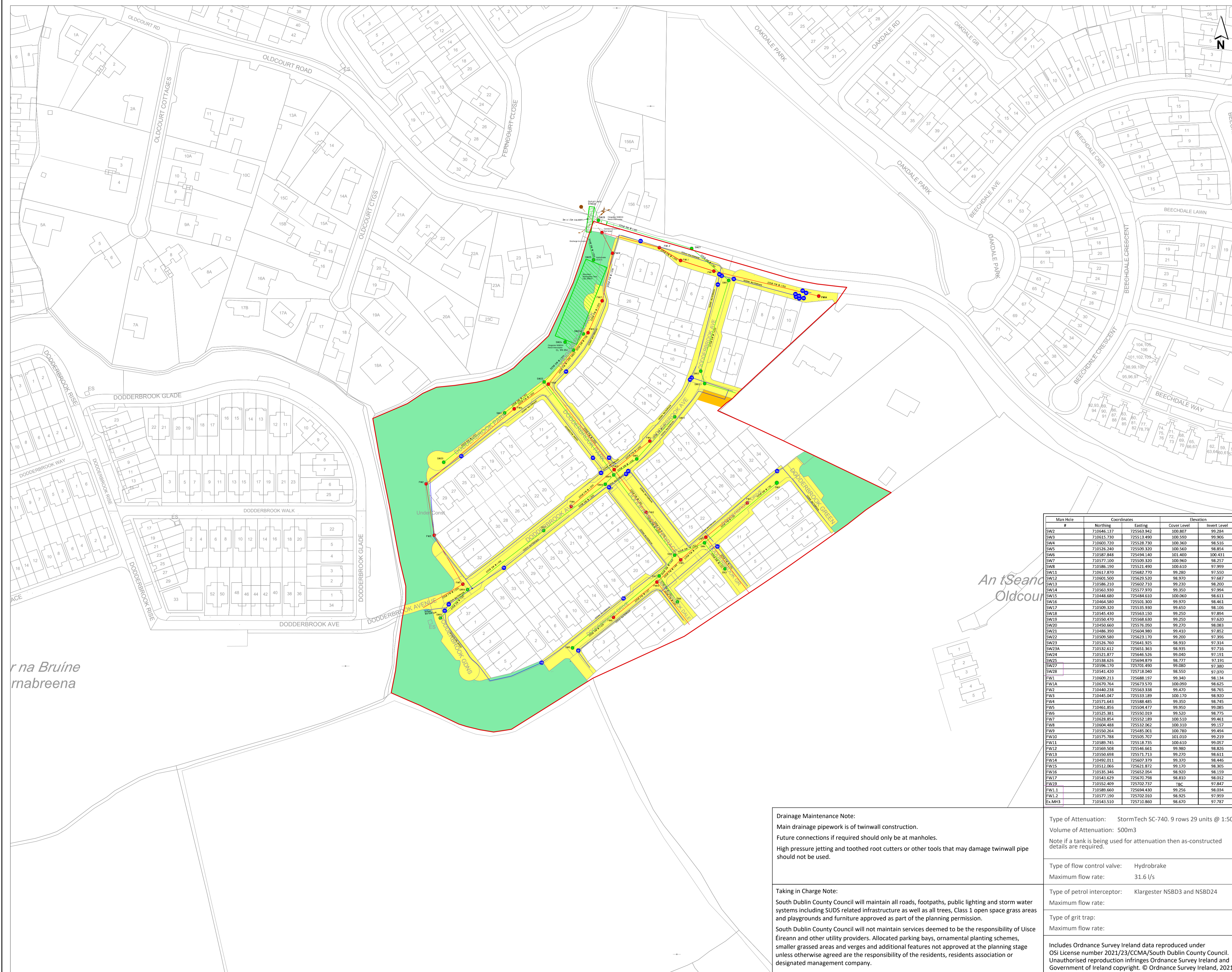
## Dodderbrook Phase 1

### Ballycullen Dublin 24

### Taking in Charge Map

Drawing Title:	<b>Taking in Charge Map</b>	
Drawn by:	<b>PL</b>	O.S. Reference: <b>3453-B</b>
Surveyed by:	<b>Pinnacle</b>	Scale: <b>1:1000</b>
Checked:	<b>JH</b>	Date: <b>29/11/2023</b>

Drawing Number:  
**BC-1462**



**Drainage Maintenance Note:**  
Main drainage pipework is of twinwall construction.  
Future connections if required should only be at manholes.  
High pressure jetting and toothed root cutters or other tools that may damage twinwall pipe should not be used.

**Taking in Charge Note:**  
South Dublin County Council will maintain all roads, footpaths, public lighting and storm water systems including SUDS related infrastructure as well as all trees, Class 1 open space grass areas and playgrounds and furniture approved as part of the planning permission.  
South Dublin County Council will not maintain services deemed to be the responsibility of Úisce Éireann and other utility providers. Allocated parking bays, ornamental planting schemes, smaller grassed areas and verges and additional features not approved at the planning stage unless otherwise agreed are the responsibility of the residents, residents association or designated management company.

Type of Attenuation:	StormTech SC-740. 9 rows 29 units @ 1:500
Volume of Attenuation:	500m <sup>3</sup>
Note if a tank is being used for attenuation then as-constructed details are required.	
Type of flow control valve:	Hydrobrake
Maximum flow rate:	31.6 l/s
Type of petrol interceptor:	Klargester NSBD3 and NSBD24
Maximum flow rate:	
Type of grit trap:	
Maximum flow rate:	
Includes Ordnance Survey Ireland data reproduced under OSI license number 2021/23/CCMA/South Dublin County Council. Unauthorised reproduction infringes Ordnance Survey Ireland and Government of Ireland copyright. © Ordnance Survey Ireland, 2021.	

Man Hole #	Coordinates	Elevation	Invert Level	
Northing	Easting	Cover Level		
SW2	710616.137	725513.842	100.807	99.284
SW3	710515.730	725513.490	100.590	99.906
SW4	710603.720	725528.730	100.360	98.516
SW5	710526.240	725509.320	100.560	98.854
SW6	710567.848	725494.480	100.400	100.421
SW7	710577.100	725509.320	100.960	98.257
SW8	710586.190	725521.490	100.610	97.999
SW11	710617.870	725682.770	99.280	97.550
SW12	710601.500	725683.300	98.970	97.687
SW13	710586.210	725602.710	99.220	98.200
SW14	710563.930	725577.970	99.350	97.994
SW15	710448.680	725484.610	100.060	98.611
SW16	710464.580	725501.300	99.270	98.463
SW17	710509.320	725535.900	99.650	98.106
SW18	710545.430	725563.150	99.250	97.894
SW19	710550.470	725568.630	99.250	97.620
SW20	710450.660	725576.050	99.270	98.083
SW21	710486.290	725604.980	99.410	97.852
SW22	710509.580	725623.170	99.200	97.395
SW23	710526.760	725641.925	98.910	97.314
SW23A	710532.612	725651.363	98.935	97.716
SW24	710521.877	725645.636	99.040	97.151
SW25	710538.626	725694.879	98.777	97.191
SW27	710596.170	725701.490	99.080	97.380
SW28	710541.420	725718.040	98.550	97.070
FW1	710609.213	725688.197	99.340	98.134
FW1A	710670.764	725673.570	100.090	98.625
FW2	710440.238	725563.338	99.470	98.765
FW3	710445.047	725533.189	100.170	98.920
FW4	710571.643	725588.489	99.350	98.745
FW5	710461.856	725504.477	99.950	99.085
FW6	710525.381	725550.019	99.520	98.775
FW7	710628.854	725552.189	100.510	99.461
FW8	710604.488	725532.062	100.310	99.157
FW9	710556.264	725485.901	100.780	99.484
FW10	710575.788	725505.707	101.010	99.219
FW11	710589.745	725518.735	100.610	99.057
FW12	710569.508	725546.661	99.980	98.826
FW13	710556.698	725511.713	99.270	98.611
FW14	710492.011	725607.379	99.370	98.446
FW15	710512.066	725621.872	99.170	98.305
FW16	710535.346	725652.054	98.920	98.159
FW17	710543.629	725670.798	98.810	98.012
FW19	710552.409	725702.737	TIC	97.847
FW1.1	710589.660	725694.430	99.256	98.034
FW1.2	710577.190	725702.010	98.925	97.959
Ex.MH3	710543.510	725710.860	98.670	97.787